

COUNTY SURVEYORS FILE DATA FILED ✓  
 DO NOT REMOVE FROM OFFICE RECEIVED JHH  
 AUG 8 1978

COUNTY SURVEYOR  
 DOUGLAS COUNTY, ORE.

**SURVEY FOR DESCRIPTION** TB

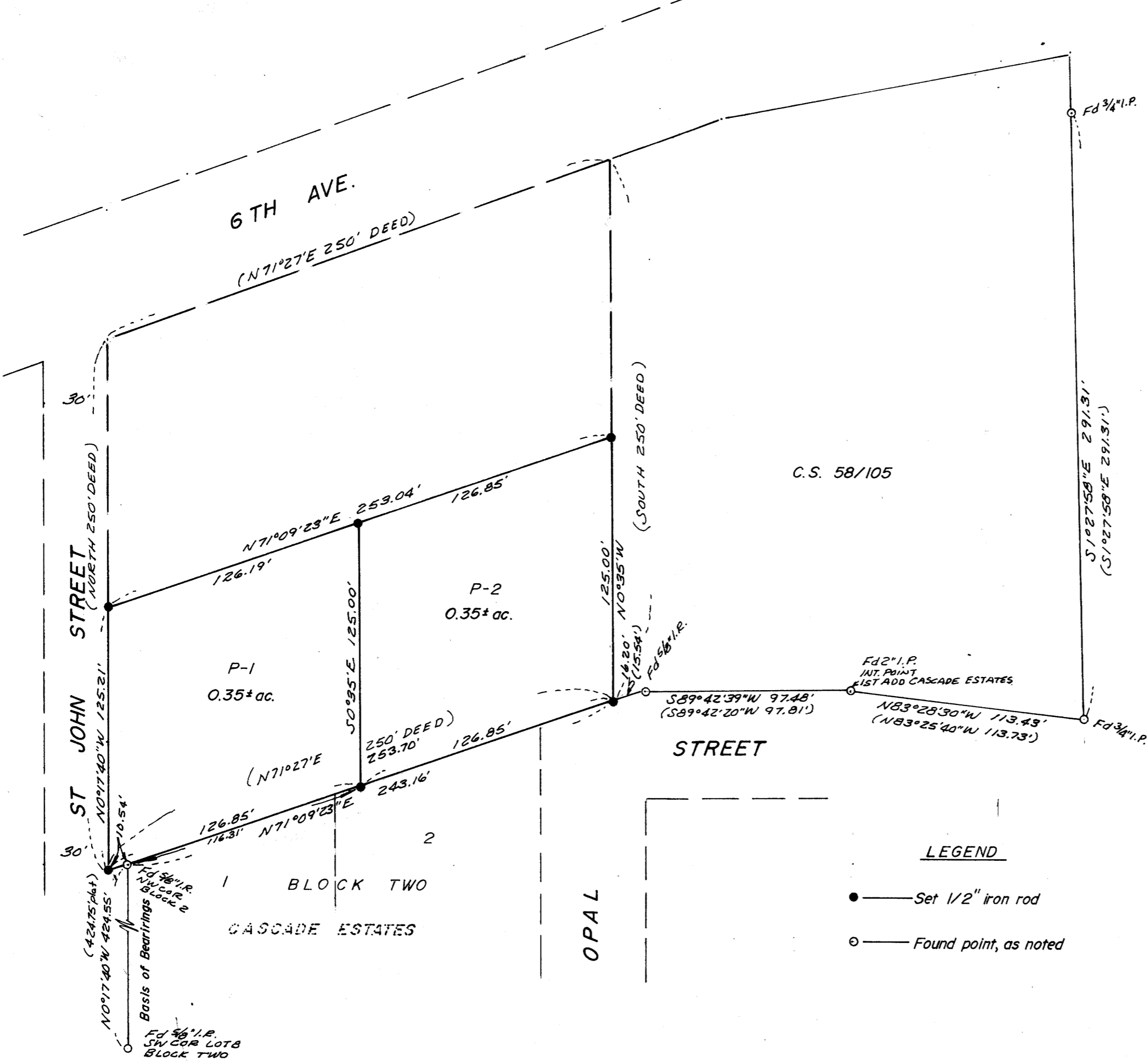
IN LOT 9 BLOCK 1, PLAT "A" S. L. & W. CO.  
 SECTION 16, T.25S. R.5W.W.M. — JULY 1978  
 SCALE: 1" = 50'

FOR: BILL STINNETT  
 BY: BAUGHMAN TECHNICAL SERVICES INC.

REGISTERED  
 PROFESSIONAL  
 LAND SURVEYOR

*Glenn S. Baughman*

OREGON  
 JULY 14, 1961  
 GLENN S. BAUGHMAN  
 536



C.S. 58/105

LEGEND

- — Set 1/2" iron rod
- — Found point, as noted

MAP FILE M 72 - 42

MAP FILE M 72 - 42