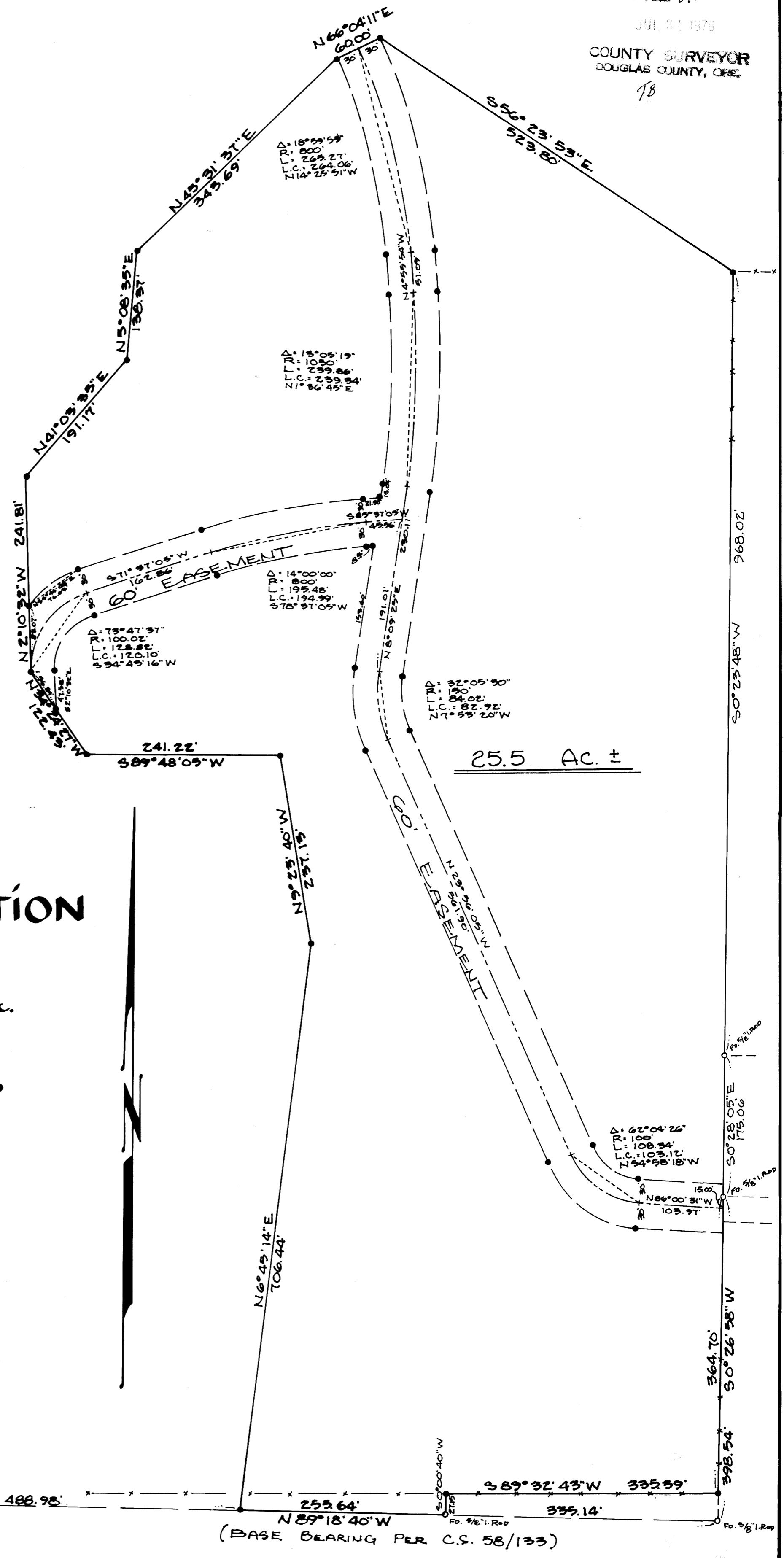


COUNTY SURVEYORS FILE DATA  
DO NOT REMOVE FROM OFFICE

FILED  
RECEIVED  
JUL 31 1978  
COUNTY SURVEYOR  
DOUGLAS COUNTY, ORE.  
TB

o — FD. MONUMENT  
• — SET 3/8" I. ROD



25.5 Ac. ±

# SURVEY FOR DEED DESCRIPTION

in Sec. 1, T. 27 S., R. 6 W., W.M.

for Casey Morgan

by B.H.W. Engineering & Surveying Inc.  
1205 S.E. Court, Roseburg, Ore.  
673-0165

Scale 1"=100'

June 1978

REGISTERED  
PROFESSIONAL  
LAND SURVEYOR

*Romanso E. Ware*  
OREGON  
NOV. 19, 1973  
ROMANSO E. WARE  
1005

SEC. 2  
1/4 COR.  
FO. 3/4" I.Pipe

(BASE BEARING PER C.S. 58/133)