

FILED  
RECEIVED *JK*

JUL 24 1978

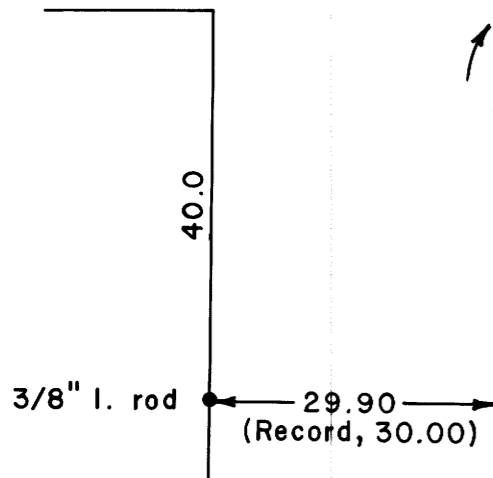
COUNTY SURVEYOR  
DOUGLAS COUNTY, ORE.

Garden Valley Blvd.

N89°47'00"E, 197.79  
(Virgeline Record, 198.44; Plat Record, 198.20)  
N89°47'00"E, 197.85

Original block line

*TB*



Ellian St.

N0°08'30"W, 298.15 (Virgeline Record, 298.15; Plat Record, N0°11'W, 295.3)  
200.00

Parcel to be leased

S0°08'30"E  
200.00

S89°47'00"W  
100.00

Block A, Curtis Tracts

S0°27'35.6"E, 298.54 (Plat Record, South, 295.3)

Hicks St.

79.75

49.94

5/8" I. rod  
0.24 West

60.03

0.54 West

92.82

6.00

6.00

S0°08'30"E, 105.89 (Record, 106.00)  
99.89

2" I. pipe  
Initial point  
Virgeline Subd.

30.0

Point of beginning

S89°53'30"W, 199.42 (Virgeline Record same; Plat Record, West, 197.20)

S89°53'30"W, 199.45 (Basis of bearings)

100.00

Alley

99.45

S0°08'30"E, 6.00

LEGEND

- Corner found (1/2" iron rod unless noted) ●
- Corner set (5/8" iron rod with aluminum cap) ○
- Corner computed, not set •

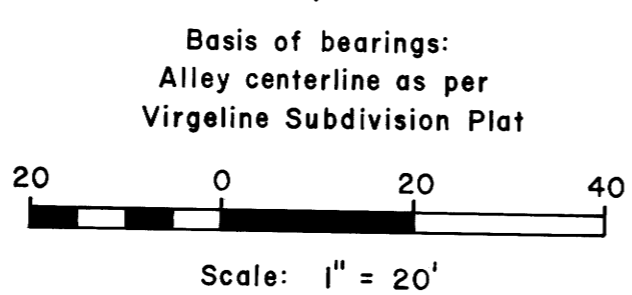
Virgeline Subd.

### SURVEY OF BLOCK A, CURTIS TRACTS, A SUBDIVISION IN THE NW 1/4 NE 1/4, SEC. 13, T27 S, R6 W, W. M., CITY OF ROSEBURG, OREGON

For: Al Shaw

By: Shaner Engineering, Inc.

July 24, 1978



Survey reference: Virgeline Subdivision Plat

COUNTY SURVEYORS FILE DATA  
DO NOT REMOVE FROM OFFICE

REGISTERED  
PROFESSIONAL  
LAND SURVEYOR

*BA Shaner*

OREGON  
OCT. 4, 1987  
BRUCE A SHANER  
430