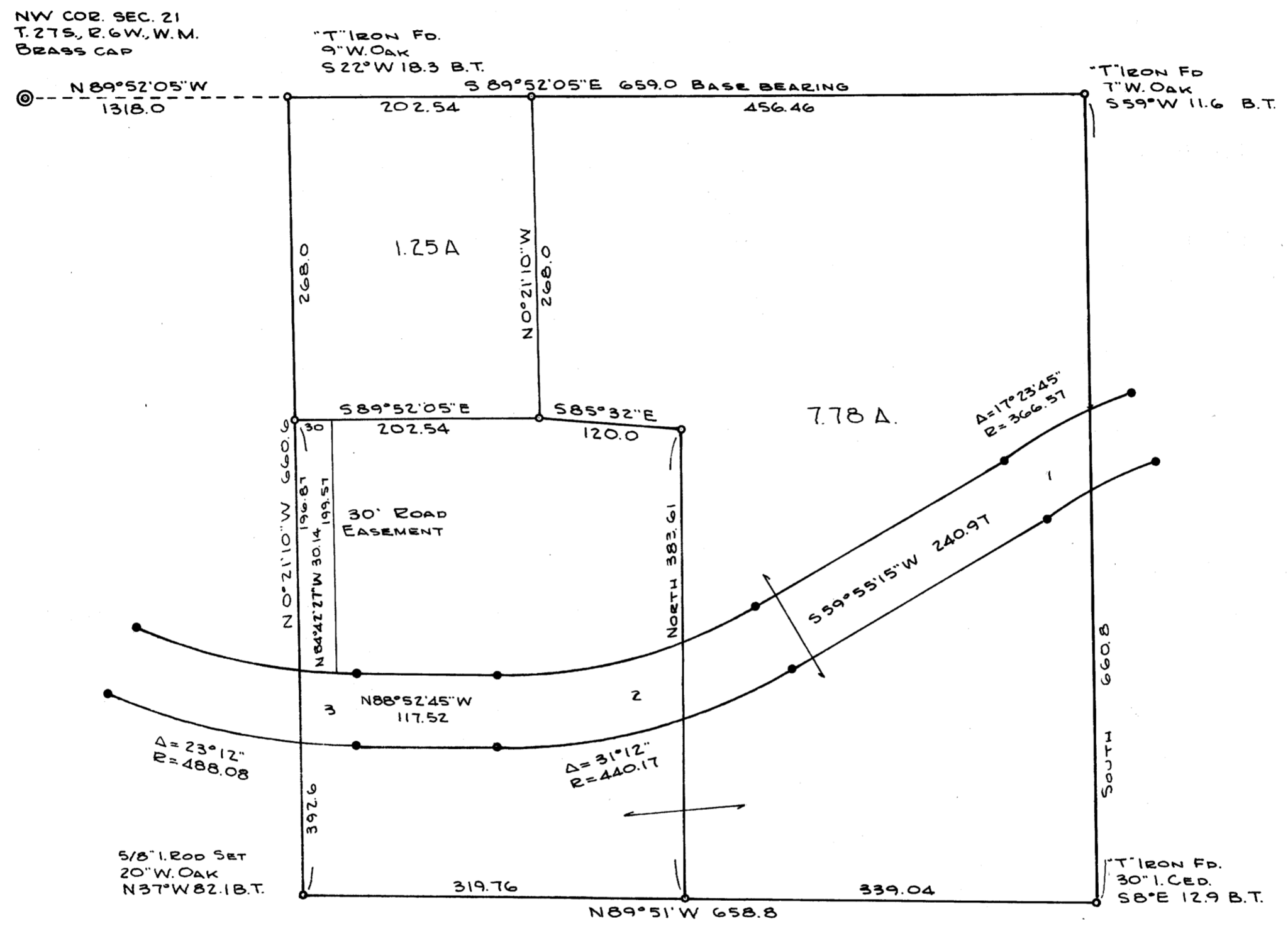


COUNTY SURVEYORS FILE DATA  
DO NOT REMOVE FROM OFFICE

SURVEY IN NW 1/4 NE 1/4 NW 1/4, SECTION 21, T. 27 S., R. 6 W., W. M.  
SURVEYED FOR JEFFERY BYERS  
SURVEYED BY R. H. GEE  
APRIL, 1971 SCALE 1" = 100'

FILED ✓  
RECEIVED LC  
JUL 18 1978  
COUNTY SURVEYOR  
DOUGLAS COUNTY, ORE.  
TB



- 1. S 64° 39' 56" W 60.60
- 2. S 75° 31' 15" W 237.05
- 3. N 86° 05' 39" W 47.45

- 5/8" I.R. FD.
- 5/8" I.R. SET

REGISTERED  
PROFESSIONAL  
LAND SURVEYOR

R. H. Gee

CREATED  
SEPTEMBER  
R. H. GEE  
1991