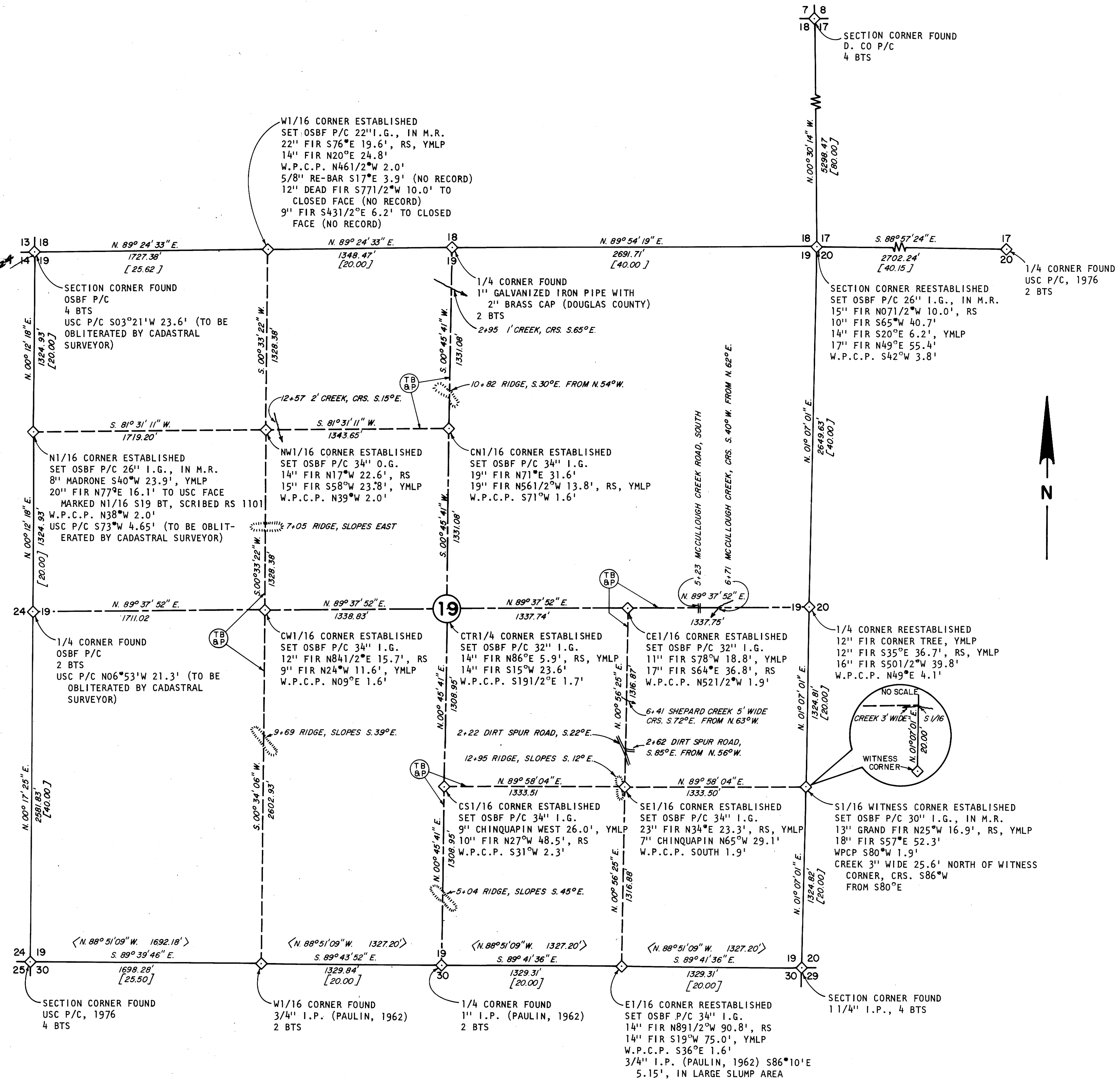


SOLAR OBSERVATION

MAGNETIC VARIATION 19°48' EAST
DATE MARCH 1, 1978
STANDARD TIME 9:23:17 A.M.
LOCAL TIME 9:09:28 A.M.
SUN'S DECLINATION 507°31'41"
REF. & PAR. CORRECTION -1.72
LATITUDE 42°47'42"
SUN'S ALTITUDE 24°39'47"
PLACE OF OBSERVATION S67°45'09"W 2988.18' FROM CORNER FOR SECTIONS 7, 8, 17, & 18, T.32S., R.6W., W.M.

LEGEND

OSBF P/C = OREGON STATE BOARD OF FORESTRY 1 1/2"X36" GALVANIZED IRON PIPE WITH 3" BROZE CAP
USC P/C = UNITED STATES CADASTRAL PIPE AND CAP
D.CO P/C = DOUGLAS COUNTY 1" GALVANIZED IRON PIPE WITH 2" BRASS CAP
I.P. = IRON PIPE
I.G. = IN GROUND
W.P.C.P. = 4"X4"X72" WHITE PAINTED CEDAR POST
YMLP = YELLOW METAL LOCATION POSTER
BTS = BEARING TREES
M.R. = MOUND OF ROCK
RS = RS 1101
[] = RECORD DISTANCE
⊙ = TRUE BLAZED AND POSTED
CRS = COURSE
USC = U.S. CADASTRAL
< > = SECTION LINE SURVEY BY WILLIAM B. PAULIN, FEB. 1962
FOR DETAILED REPORT ON FOUND CORNERS SEE COUNTY RECORDS. ALL NEW CORNERS AND ACCESSORIES MARKED ACCORDING TO "MANUAL OF INSTRUCTIONS FOR THE SURVEY OF THE PUBLIC LANDS OF THE U.S."
DISTANCE MEASURED TO BT FACE.
ESTABLISHED CORNER = NEW CORNER SET
REESTABLISHED CORNER = LOST G.L.O., CADASTRAL OR OTHER CORNER RESET BY PROPORTIONATE MEASUREMENT OR AS NOTED.



REGISTERED
PROFESSIONAL
LAND SURVEYOR
Lloyd D. Smith
OREGON
LLOYD D. SMITH
1101

SURVEY FOR:
STATE OF OREGON-DEPARTMENT OF FORESTRY
SECTION 19, T.32S., R.6W., W.M.
DOUGLAS COUNTY, OREGON
THEODOLITE, TAPE AND E.D.M. SURVEY BY:
D. SMITH, J. MCINTOSH, D. BUCHHOLZ, & C. HUGHES
DRAWN BY: D. BUCHHOLZ
MAY 25, 1978
SCALE: 1"= 500'

M 71-79

RESTORED CORNER FOR STATE OF OREGON--DEPARTMENT OF FORESTRY

Section corner common to Sections 18, 19, 13 and 24, T32S, R6 & 7W, W.M., Douglas County, Oregon.

ORIGINAL

Fir Post (missing) from which a:

- 8" Laurel bears N85°E 30 lks.; now 14" diam. x 3" high hollow root crown in Laurel clump N81°E 20.0 ft.
- 6" Laurel bears S30°E 61 lks.; now Laurel clump S14½°E 37.2 ft.
- 24" Pine bears S70°W 100 lks.; now 28" x 50' high snag S70°W 60.3 ft. horz. measurement. Slope measurement is 100 lks. to predetermined face and 103 lks. to center of tree. Only Pine in area on steep and rocky S.E. slope.
- 5" Live Oak bears N45°W 31 lks.; now Live Oak clump in place.

RESTORED

Set 1½" x 36" galvanized iron pipe with 3" bronze cap marked "OREGON STATE BOARD OF FORESTRY T32S R7W R6W S13 S18 S24 S19 1978 RS1101", 20 inches in ground, in mound of rock, and from which a:

- 14" Fir bears S62°W 10.9 ft. to face; scribed T32S R7W S24 BT, B.L.M. face on S.E. side of tree; marked T32S R7W S13 BT.
- 38" Fir bears N01°W 59.9 ft. to face; scribed T32S R7W S13 BT.
- 28" Fir bears N74½°E 85.9 ft. to face; scribed T32S R6W S18 BT RS1101.
- 19" Fir bears S25°E 48.7 ft. to face, on B.L.M. scribed tree; marked T32S R6W S19 BT.

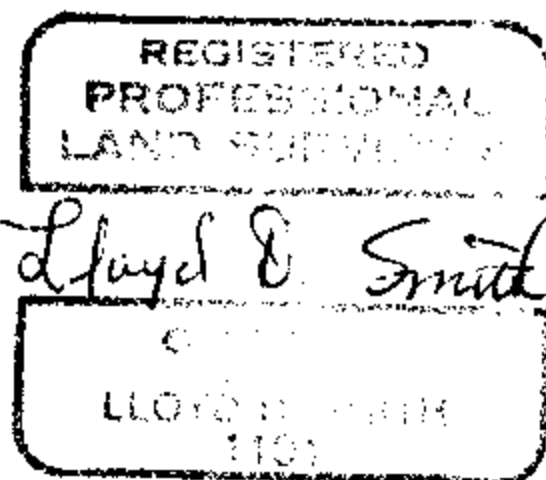
Set 4" x 4" x 72" white painted Cedar post N73°W 3.6 ft. from corner pipe. Oregon State Forestry Department metal location poster on 14" Fir S62°W 10.9 ft.

B.L.M. pipe and cap S3° 21'W 23.6 ft., to be obliterated by B.L.M.

Dated March 13, 1978

Restored by James M. McIntosh under my direction
James M. McIntosh, Engineer

Present and witnessed by David B. Buchholz
Christopher L. Hughes



FILED
RECEIVED *dh*

COUNTY SURVEYOR
DOUGLAS COUNTY, ORE.

C.S. File No. 58/164-1C

#103 T32-7 ✓
#149 T32-6 ✓