

COUNTY SURVEYORS FILE DATA
DO NOT REMOVE FROM OFFICE

FILED *2*
RECEIVED *BS*

JUL 3 1978

COUNTY SURVEYOR
DOUGLAS COUNTY, ORE.
SHH

SURVEY IN SUBLLOT A, SUTHLIN LAND AND WATER CO, PLAT K
SECTION 24, T. 25 S., R. 5 W., W.M.
SURVEYED FOR ERNEST SMITH
SURVEYED BY R. H. GEE APRIL, 1978
SCALE 1" = 100'

R. H. Gee
R. H. GEE

SW COR. LOT 1, BLK. 4
PLAT K S.L.&W.CO.
COR. OF RECORD

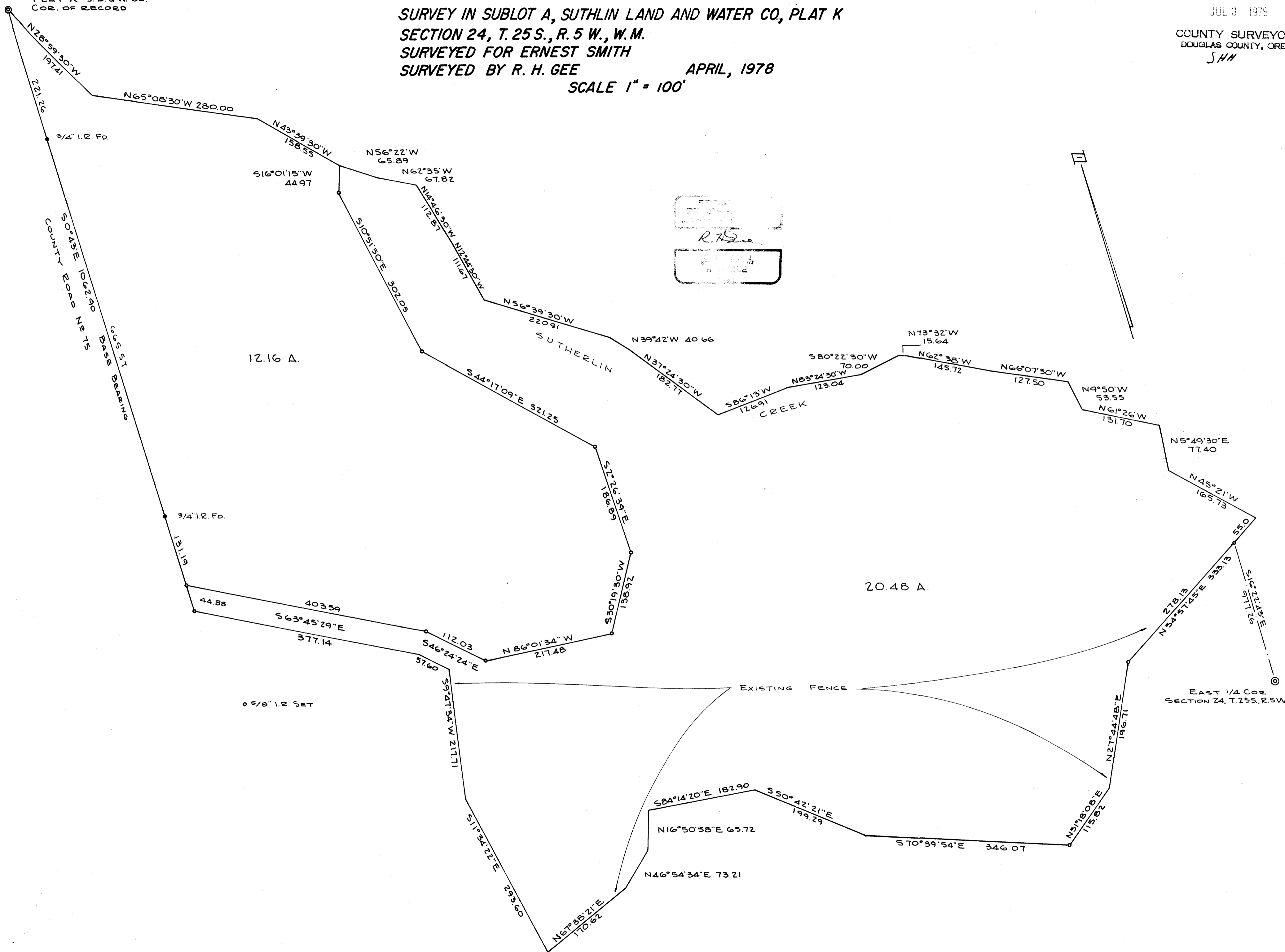
COUNTY ROAD BASE BEARING
S 0° 45' E 1062.60

12.16 A.

20.48 A.

5/8" I.R. SET

EAST 1/4 COR.
SECTION 24, T. 25 S., R. 5 W., W.M.



MAP FILE M 71-66

MAP FILE M 71-66