

# SURVEY FOR PROPERTY CORNERS

LOT 18 SCHOOL ADDITION - SECTION 22, T.29S. R.5W.W.M.

FOR: PAUL KNEELAND

BY: BAUGHMAN TECHNICAL SERVICES INC.

JUNE 1978 — SCALE: 1" = 50'

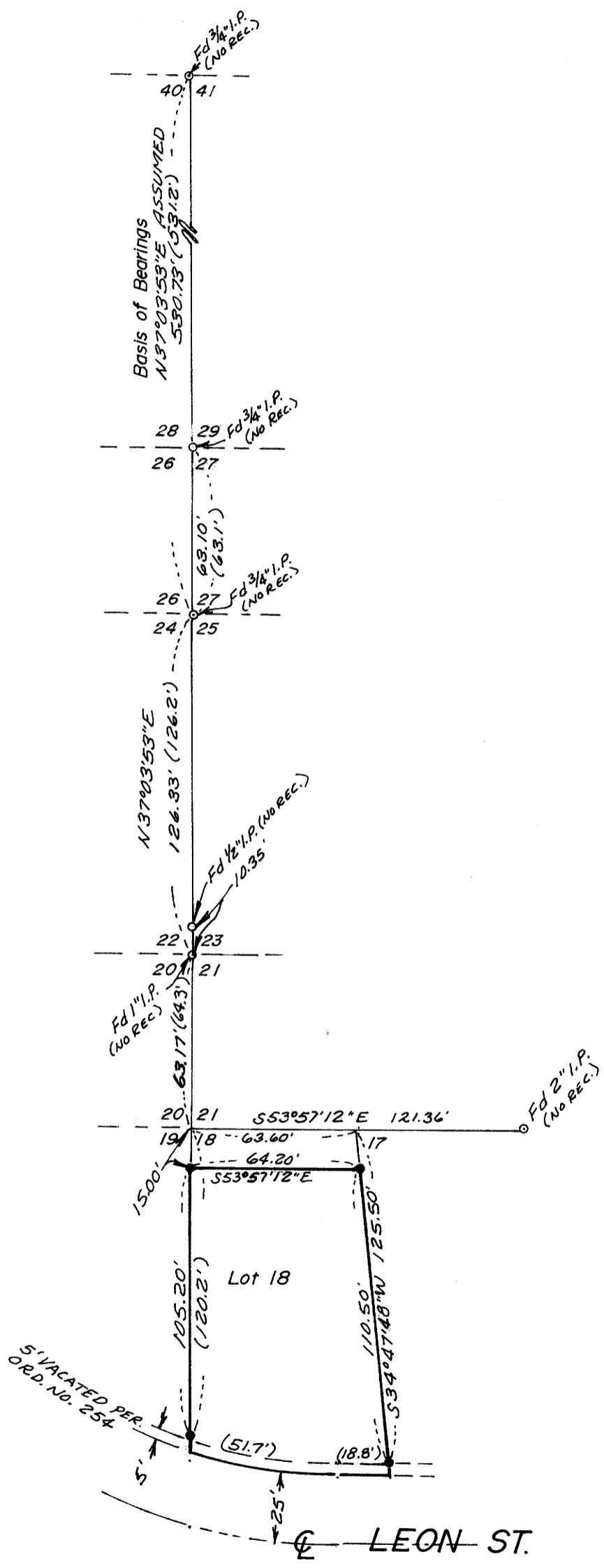
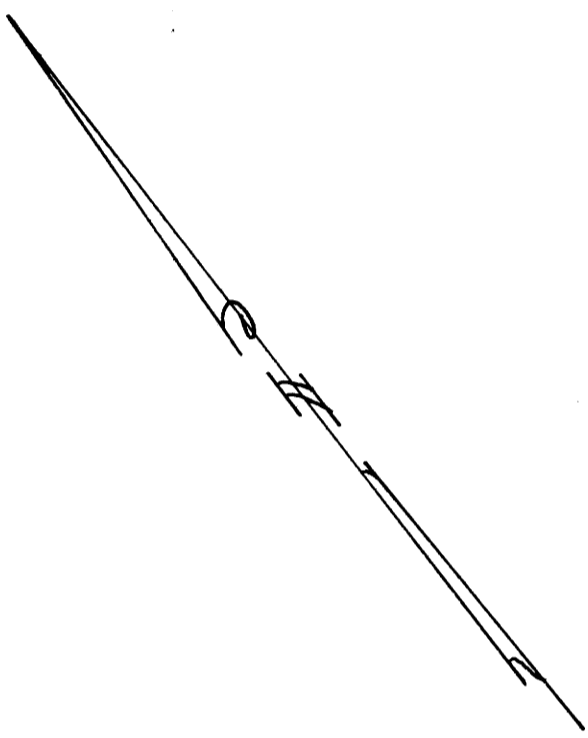
COUNTY SURVEYORS FILE DATA  
DO NOT REMOVE FROM OFFICE

FILED ✓  
RECEIVED ✓

JUN 30 1978

COUNTY SURVEYOR  
DOUGLAS COUNTY, ORE.

JHH



### LEGEND

- — Set 1/2" iron rod
- — Found point, as noted

REGISTERED  
PROFESSIONAL  
LAND SURVEYOR

OREGON  
JULY 14, 1961  
GLENN S. BAUGHMAN  
536