

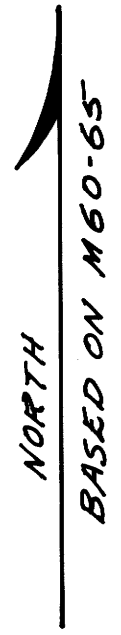
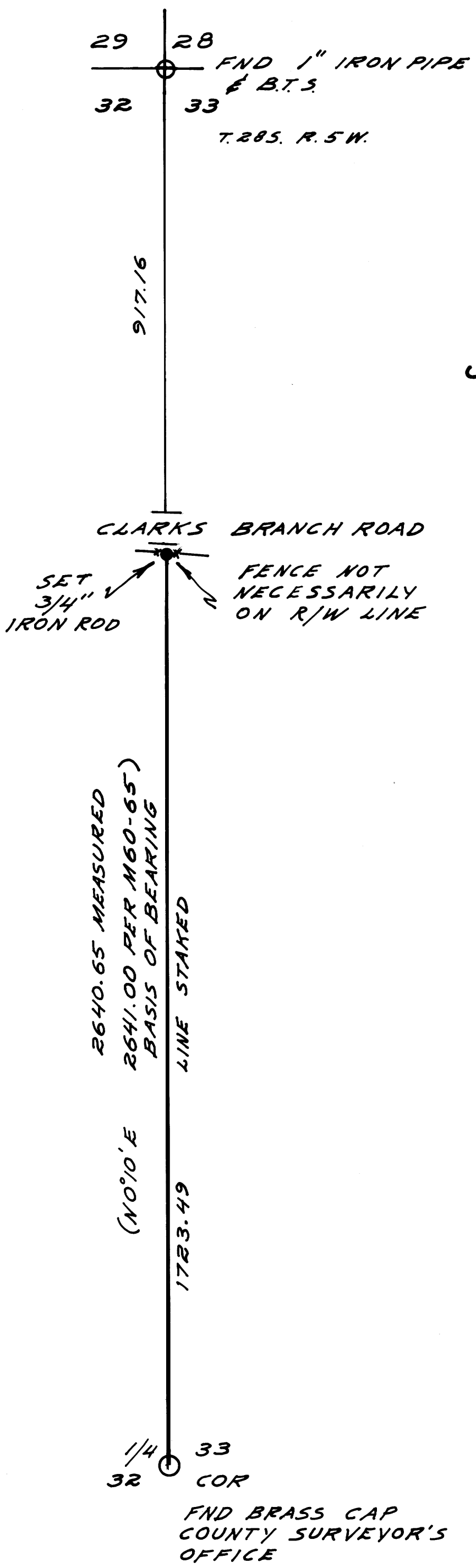
COUNTY SURVEYORS FILE DATA
DO NOT REMOVE FROM OFFICE

FILED
RECEIVED
JUL 27 1978
COUNTY SURVEYOR
DOUGLAS COUNTY, ORE.

MAP FILE M71-60

SURVEY OF PART OF
SECTION LINE BETWEEN
SEC. 32 & 33 T.28S. R.5 W. WM.

FOR
JOHN WIMBERLY



SCALE 1" = 200'

UMPQUA SURVEYING CO.
MYRTLE CREEK OREGON
JUNE 1978

LEGEND: AS NOTED

REGISTERED
OREGON
LAND SURVEYOR

William J. Ruppert

JULY 12, 1968
WILLIAM J. RUPPERT
866

MAP FILE M71-60