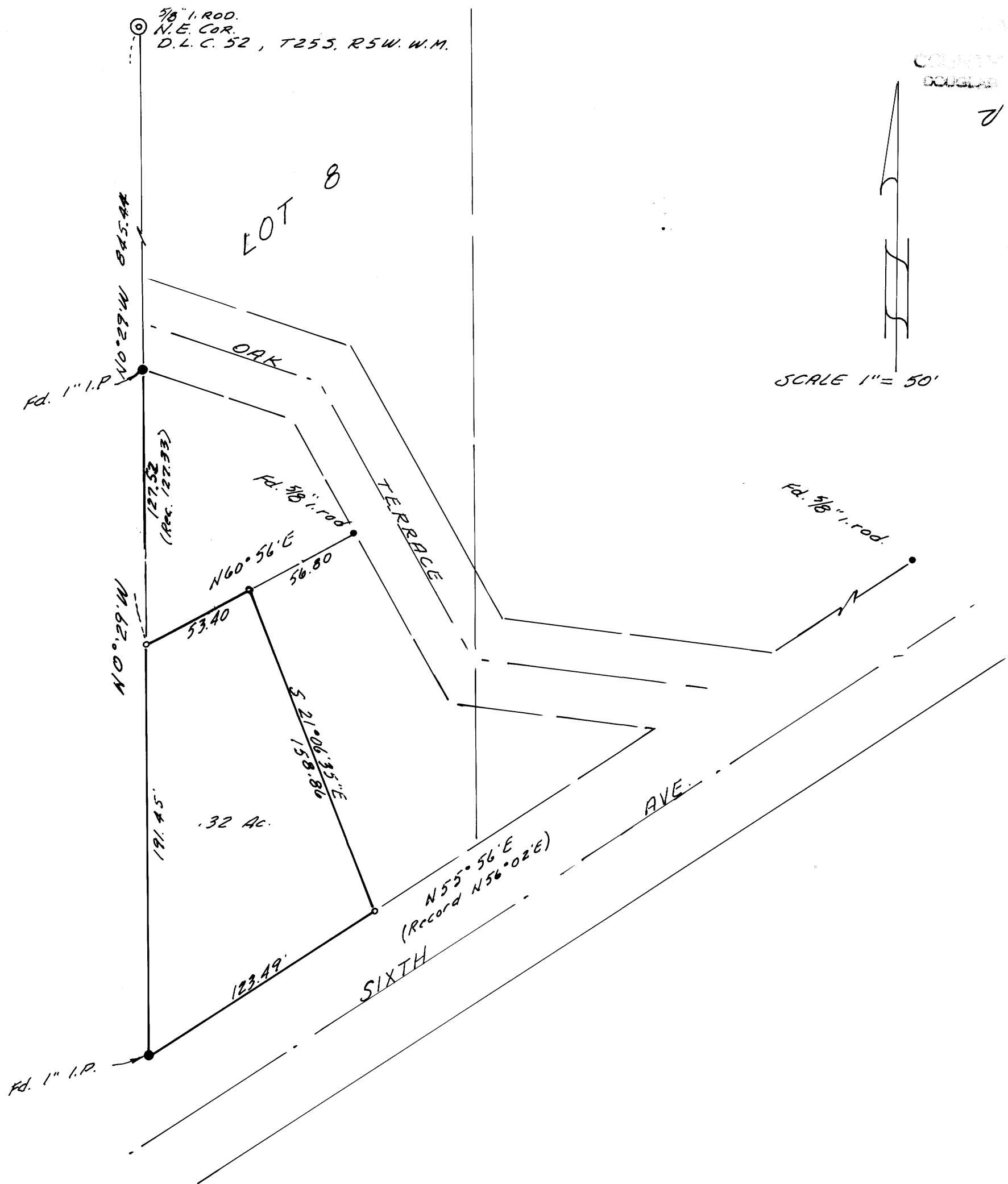


SURVEY IN LOT 8, BLOCK 3, PLAT J, S.L. & W. CO.
 SEC. 17, T25S, R5W. W.M., SUTHERLIN, ORE.

SURVEYED FOR - CLEO. F. LOOMIS COUNTY SURVEYORS FILE DATA JUNE 1978
 SURVEYED BY - W. S. BARNES

DO NOT REMOVE FROM OFFICE

FILED
 RECEIVED
 COUNTY SURVEYOR
 DOUGLAS COUNTY, ORE.



SCALE 1" = 50'

• Denotes monuments found.
 ○ " " 5/8" iron rods set.
 Reference - C.S. File 40/111

REGISTERED
 PROFESSIONAL
 LAND SURVEYOR

W. S. Barnes

WILLIAM S. BARNES
 1978