

COUNTY SURVEYORS FILE DATA
DO NOT REMOVE FROM OFFICE

FILED ✓
RECEIVED LC

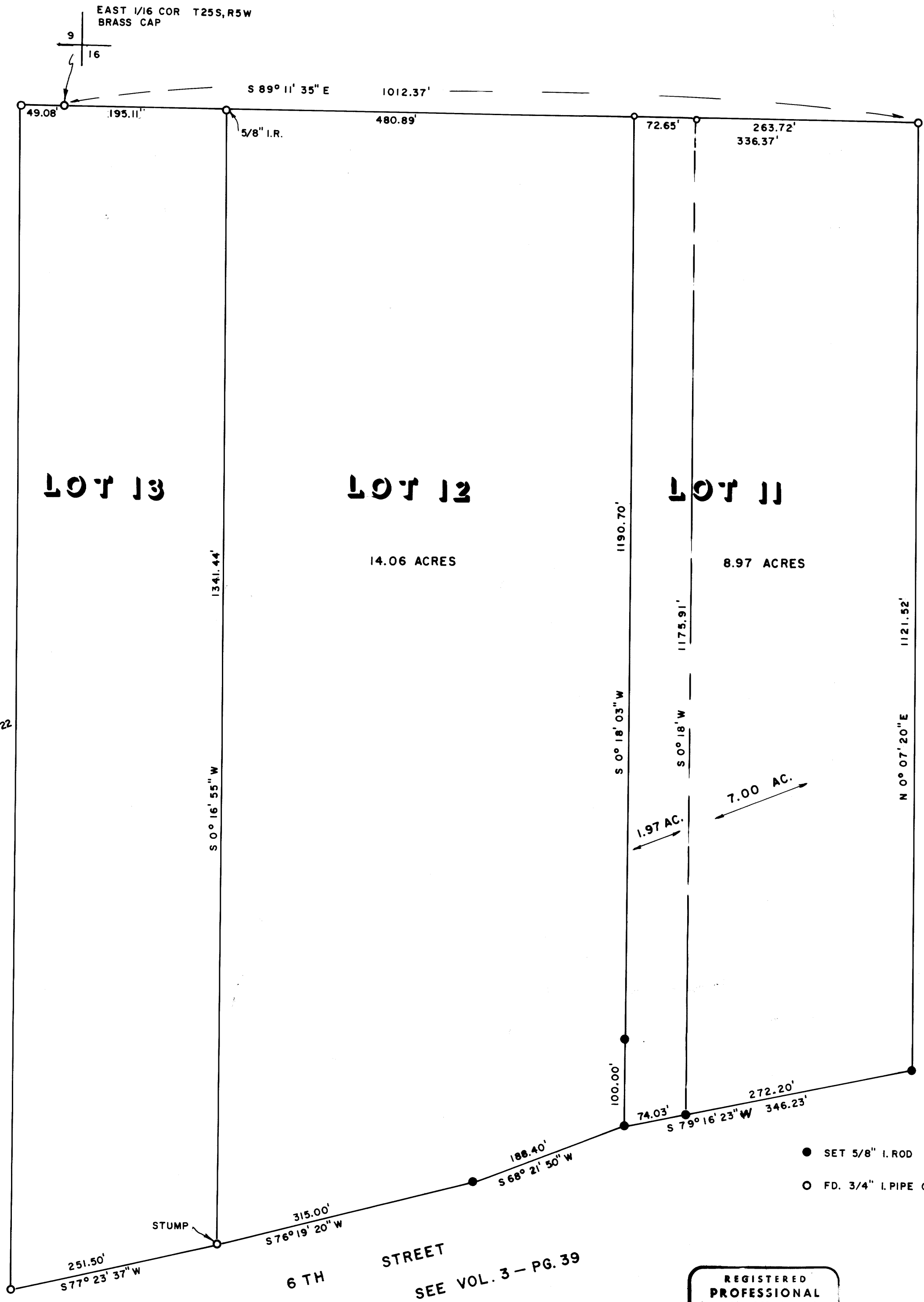
JUN 19 1978

SURVEY OF LOTS 11 AND 12, BLOCK 1, PLAT J, S.L. & W. CO.
SECTION 16, T25S, R5W, WM
FOR LEBARE
JUNE, 1978

COUNTY SURVEYOR
DOUGLAS COUNTY, OREGON

BY HAROLD BALL L.S.

BASES OF
SECTIONS
SEE M 69-22



- SET 5/8" I. ROD
- FD. 3/4" I. PIPE OR AS SHOWN

6 TH STREET
SEE VOL. 3 - PG. 39

REGISTERED
PROFESSIONAL
LAND SURVEYOR

Harold L Ball
OREGON
SEPT. 23, 1977
HAROLD L. BALL
1123