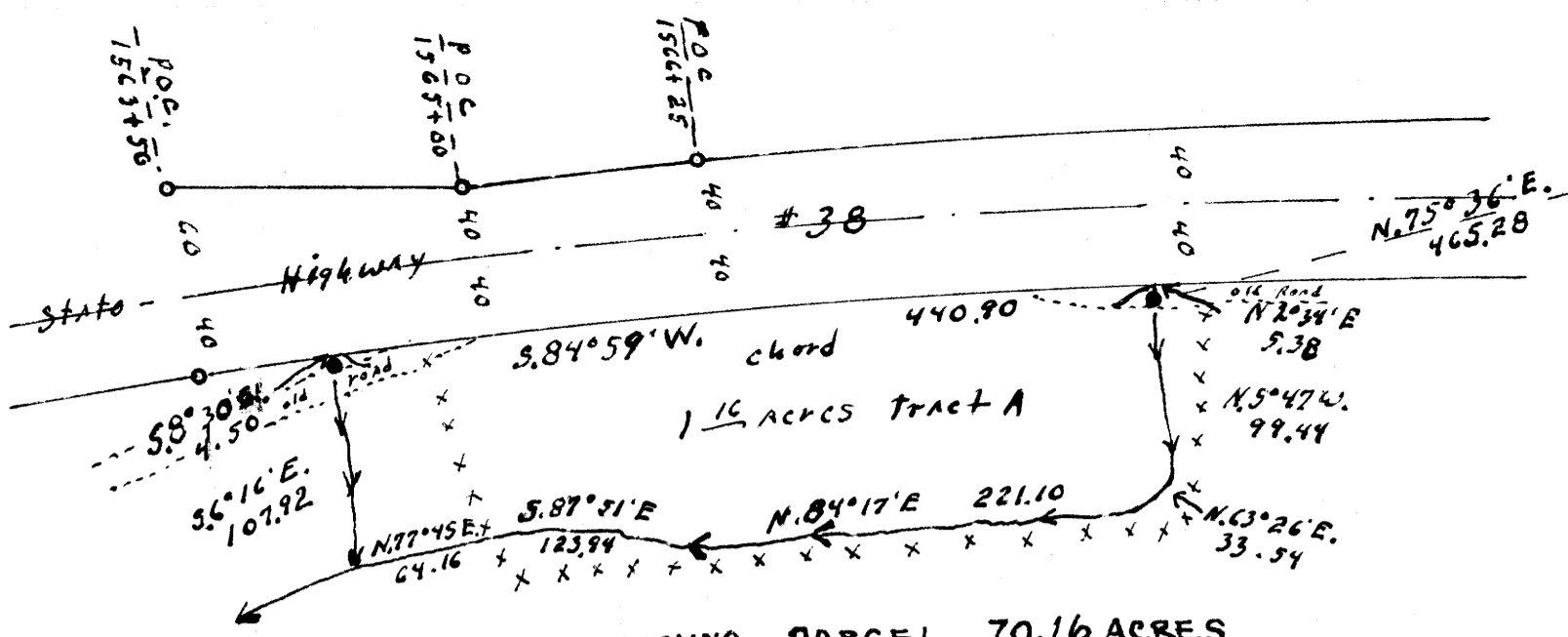


FILED
RECEIVED LC

JUN 12 1978

COUNTY SURVEYOR
DOUGLAS COUNTY, ORE.

MAP FILE M71-93



Found Brass cap
1/4 S 10/15 T22S, R6W, W.M.

MINOR Land partitioning SECT. 15, T.22S., R.6W. W.M.

partitioner
Richard W. Johnstrud
Highway 38
Drain, Oreg. 97435
Phone 836-2504

WELL + SEPIC

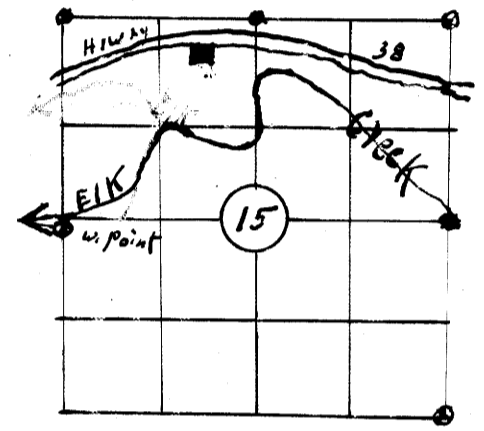
REMAINING PARCEL 70.16 ACRES

1° 20' C. R.
Δ = 36° 45'
T. 1427.5

State Highway Drg.
No. 4B-16-12

- Set 5/8" x 40" Rebar
- Found state Highway Brass Monuments

Scale 1" = 100'
MAY 8, 1978



Tract A

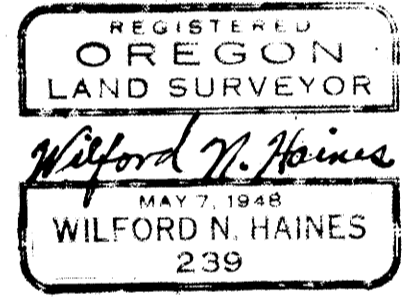
Beginning at a 5/8" steel Rod from which point the 1/4 Section corner common to sections 10+15, T.22S., R.6W., W.M. Bears N75°36'E 465.28ft. Thence N 2°34'E. 5.38ft. to a point on south Right-of-way line of state Highway #38, Thence westerly along said Right-of-way a chord distance of 584°59'W 440.90ft. to a point, Thence S. 8°30'E 4.50ft. to a 5/8" steel Rod, Thence down a stream S 6°16'E. 107.92ft. to its intersection with another stream, Thence up said other stream N. 77°45'E. 64.16ft. and S. 87°51'E. 123.94ft. and N 84°17'E 221.10ft and N. 63°26'E. 33.94ft and N. 5°47'W. 99.44ft. to the point of beginning.

Tract B

Vol. 184 page 572
PE. ASSESSOR'S OFFICE
Loss the above Tract.

2 Lots

This map prepared by
Wilford N. Haines
Rt. 38 Box 2
Drain, Oreg. 97435



Keith J. Cubio
PLANNING DIRECTOR

Francis L. Ingram
COUNTY SURVEYOR

5/18/78
DATE

6-12-78
DATE

STATE OF OREGON)
COUNTY OF DOUGLAS) SS.

I, DORIS L. WADSWORTH, COUNTY CLERK AND RECORDER OF CONVEYANCES, IN AND FOR SAID COUNTY, DO HEREBY CERTIFY THAT THE WITHIN INSTRUMENT WAS RECORDED THIS DAY.

JUN 12 1978 4 3A 3/226

BY Marilyn Deal
DEPUTY

NO. 78-1155 FEE 5.00

DOUGLAS COUNTY OFFICIAL RECORDS

COUNTY SURVEYORS FILE DATA
DO NOT REMOVE FROM OFFICE

MAP FILE M71-93