

# SURVEY FOR DESCRIPTION

IN SECTION 8, T.29S. R.7W.W.M.

FOR: KEITH HUSEN

BY: BAUGHMAN TECHNICAL SERVICES INC

JUNE 1978 - SCALE: 1" = 200'

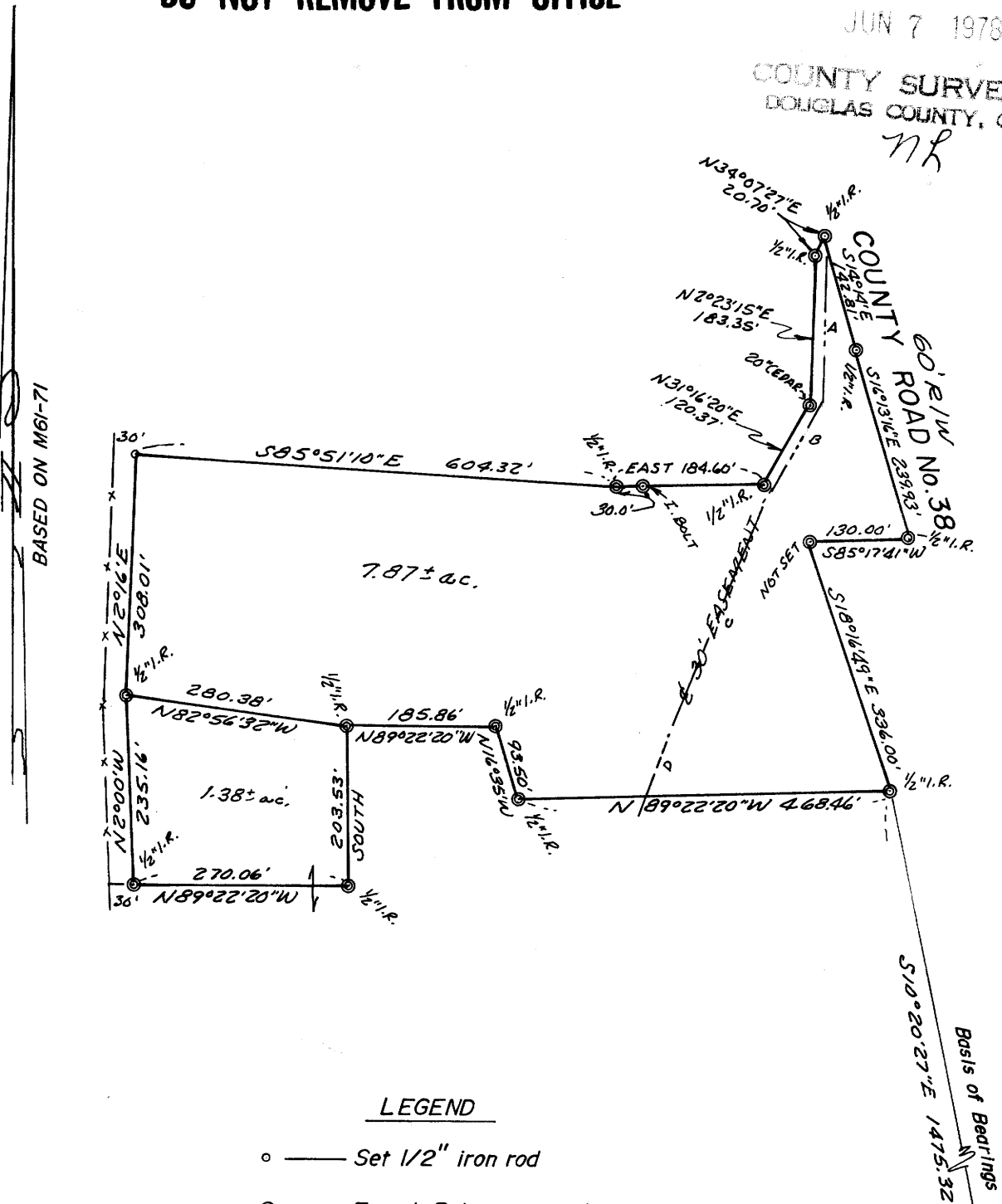
**COUNTY SURVEYORS FILE DATA  
DO NOT REMOVE FROM OFFICE**

FILED *✓*  
RECEIVED *JH*

JUN 7 1978

COUNTY SURVEYOR  
DOUGLAS COUNTY, ORE.

*nr*



BASED ON M61-71

### LEGEND

- — Set 1/2" iron rod
- ⊙ — Found Point as noted

### EASEMENT

- A- S2°23'15"W 189.43'
- B- S31°04'52"W 126.63'
- C- S23°02'38"W 314.40'
- D- S22°22'48"W 140'±

REGISTERED  
PROFESSIONAL  
LAND SURVEYOR

*Glenn S. Baughman*

OREGON  
JULY 14, 1961  
GLENN S. BAUGHMAN  
536

Fd. BRASS CAP 8  
17 1/4 cor.