

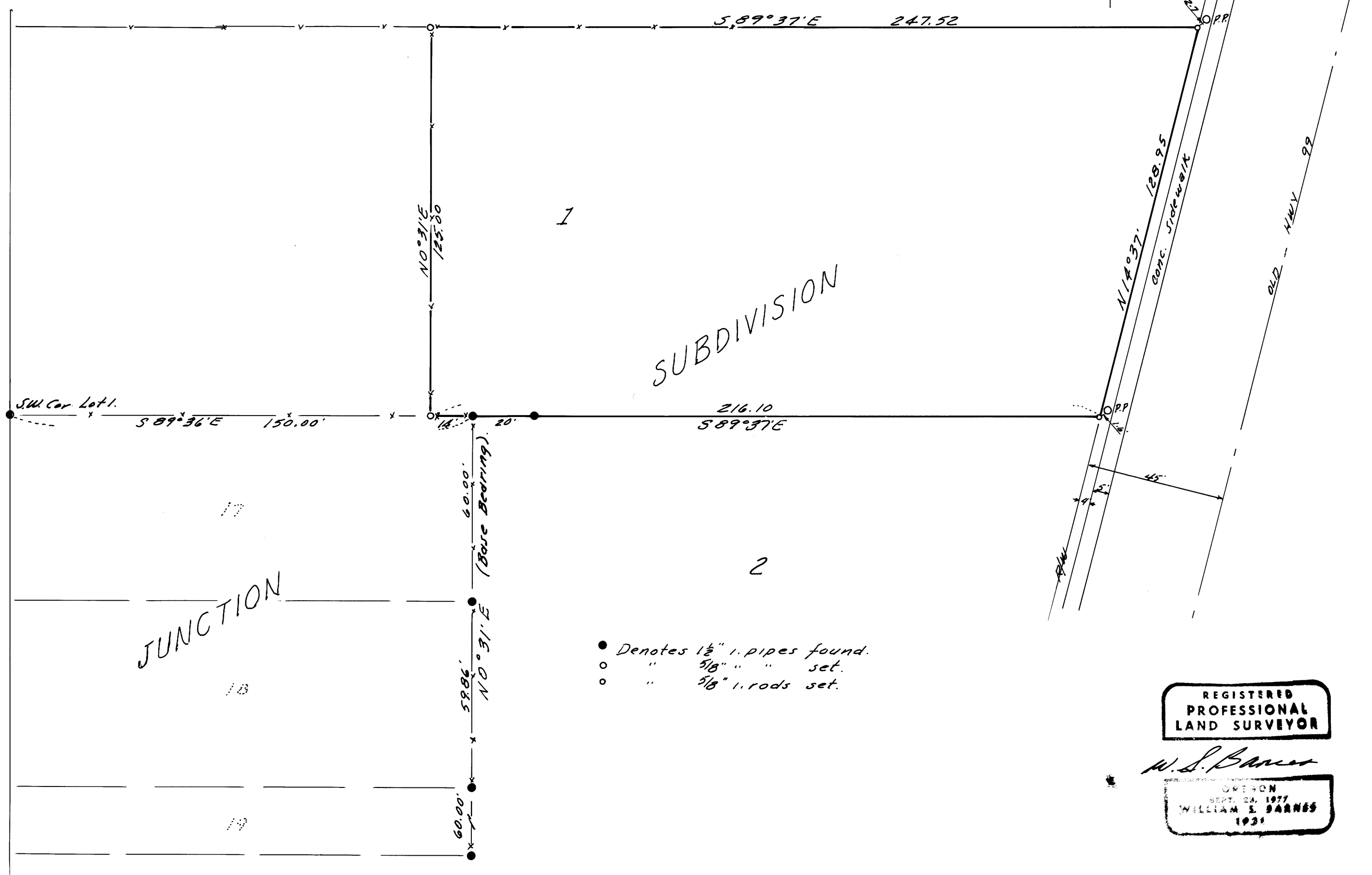
COUNTY SURVEYORS FILE DATA
DO NOT REMOVE FROM OFFICE

SURVEY TO SET PROPERTY CORNERS
IN LOT 1, JUNCTION SUBDIVISION, WINSTON, ORE.
SURVEYED BY - W.S. BARNES SEC. 21, T28S, R6W.W.M. JUNE 1978 COUNTY SURVEYOR
SURVEYED FOR - RALPH BEAL SCALE 1" = 30' DOUGLAS COUNTY, ORE.

FILED ✓
RECEIVED ✓

JUN 5 1978

SCALE 1" = 30' DOUGLAS COUNTY, ORE.
nh



- Denotes 1 1/2" pipes found.
- " 5/8" " " set.
- " 5/8" rods set.

REGISTERED
PROFESSIONAL
LAND SURVEYOR

W.S. Barnes

OREGON
SEPT. 24, 1977
WILLIAM E. BARNES
1921

MAP FILE 1971-26

MAP FILE 1971-26