

# SURVEY TO SET PROPERTY CORNERS

IN LOTS 9 thru 11 BLOCK 17 MILLER'S ADDITION-SEC. 25, T.27S.R.6W.W.M.

FOR: ROBERT BERRY  
 BY: BAUGHMAN TECHNICAL SERVICES INC.

MAY 1978

SCALE: 1"=100'

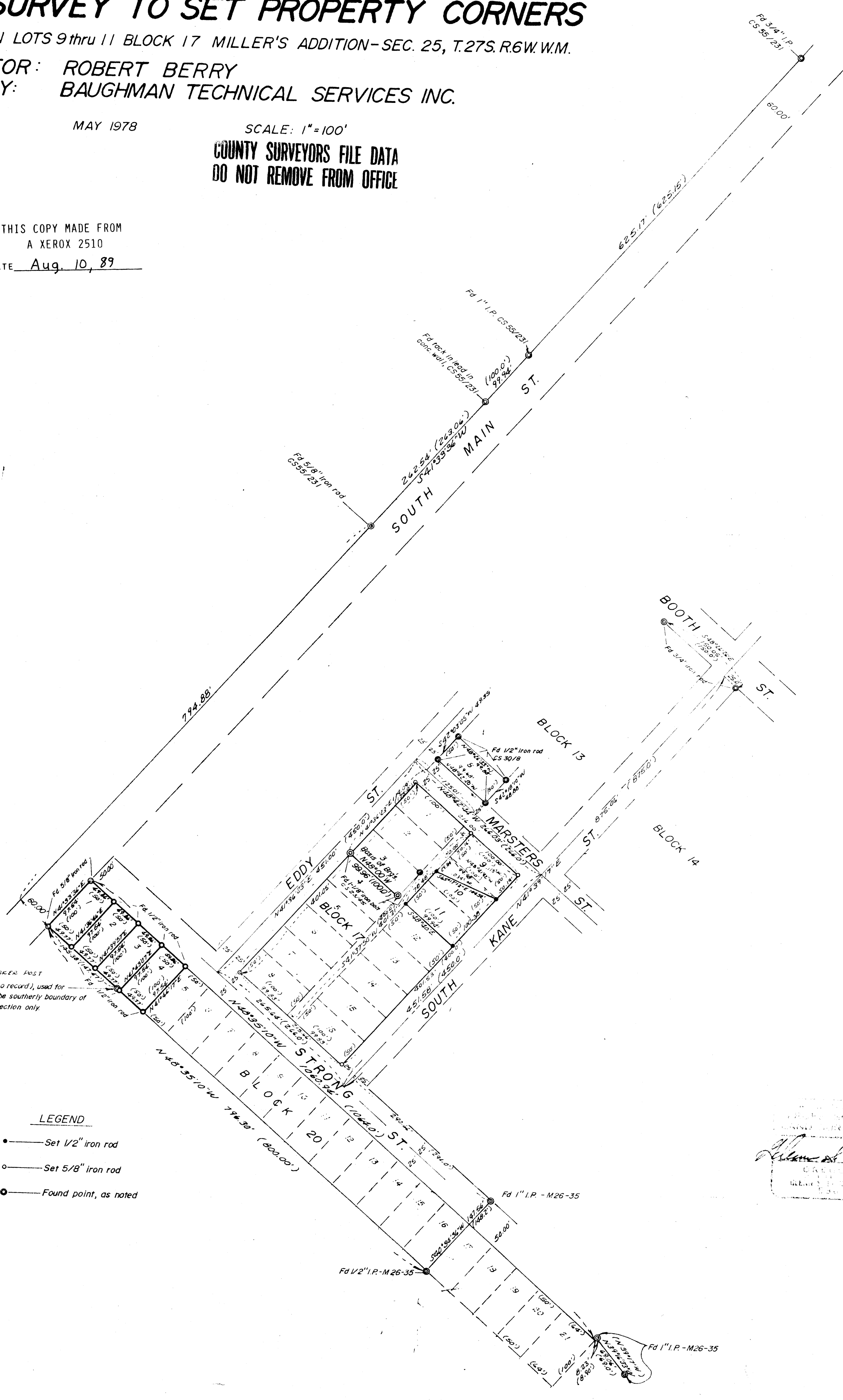
COUNTY SURVEYORS FILE DATA  
 DO NOT REMOVE FROM OFFICE

FILED  
 RECEIVED 82

MAY 15 1976

COUNTY SURVEYOR  
 DOUGLAS COUNTY, ORE.

THIS COPY MADE FROM  
 A XEROX 2510  
 DATE Aug. 10, 89



O.S.H.D. MARKER POST  
 Fd 1" axle (no record), used for  
 determining the southerly boundary of  
 Block 20—direction only.

- LEGEND**
- — Set 1/2" iron rod
  - — Set 5/8" iron rod
  - ⊙ — Found point, as noted

BAUGHMAN TECHNICAL SERVICES INC.  
 COUNTY SURVEYOR  
*Alan S. Baughman*  
 GREGORY  
 WELLSINGTON  
 ORE.

BASED ON CS 24185