

SURVEY OF DEED DESCRIPTION FOR VIRGINIA RICE

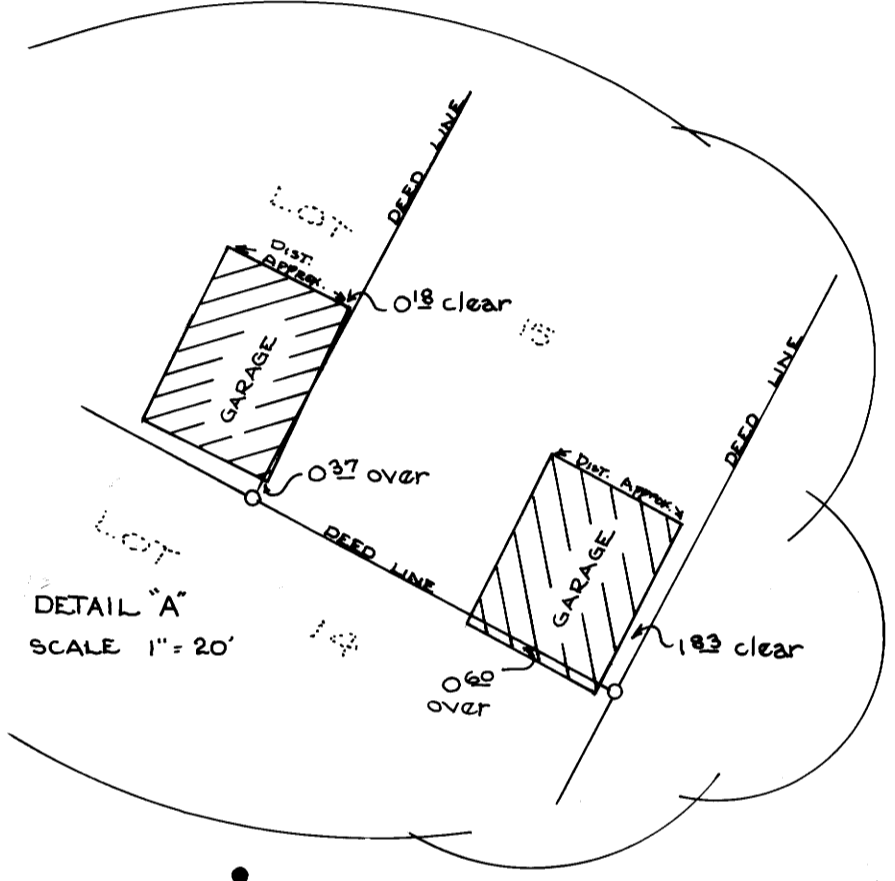
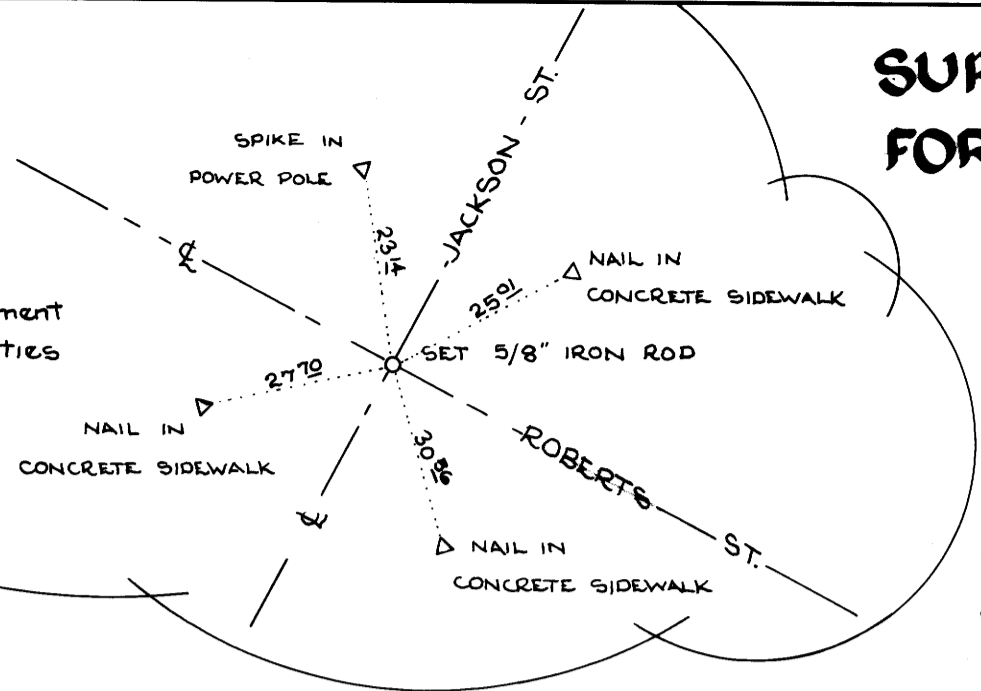
COUNTY SURVEYORS FILE DATA
DO NOT REMOVE FROM OFFICE

Land described in
instrument # 76-1293
of Douglas County Deed Records
being a portion of Lot 16 Block 19, Waite's Addition
to Roseburg, Oregon.

Sec. 24 T. 27 S., R. 6 W., W. 2 N.

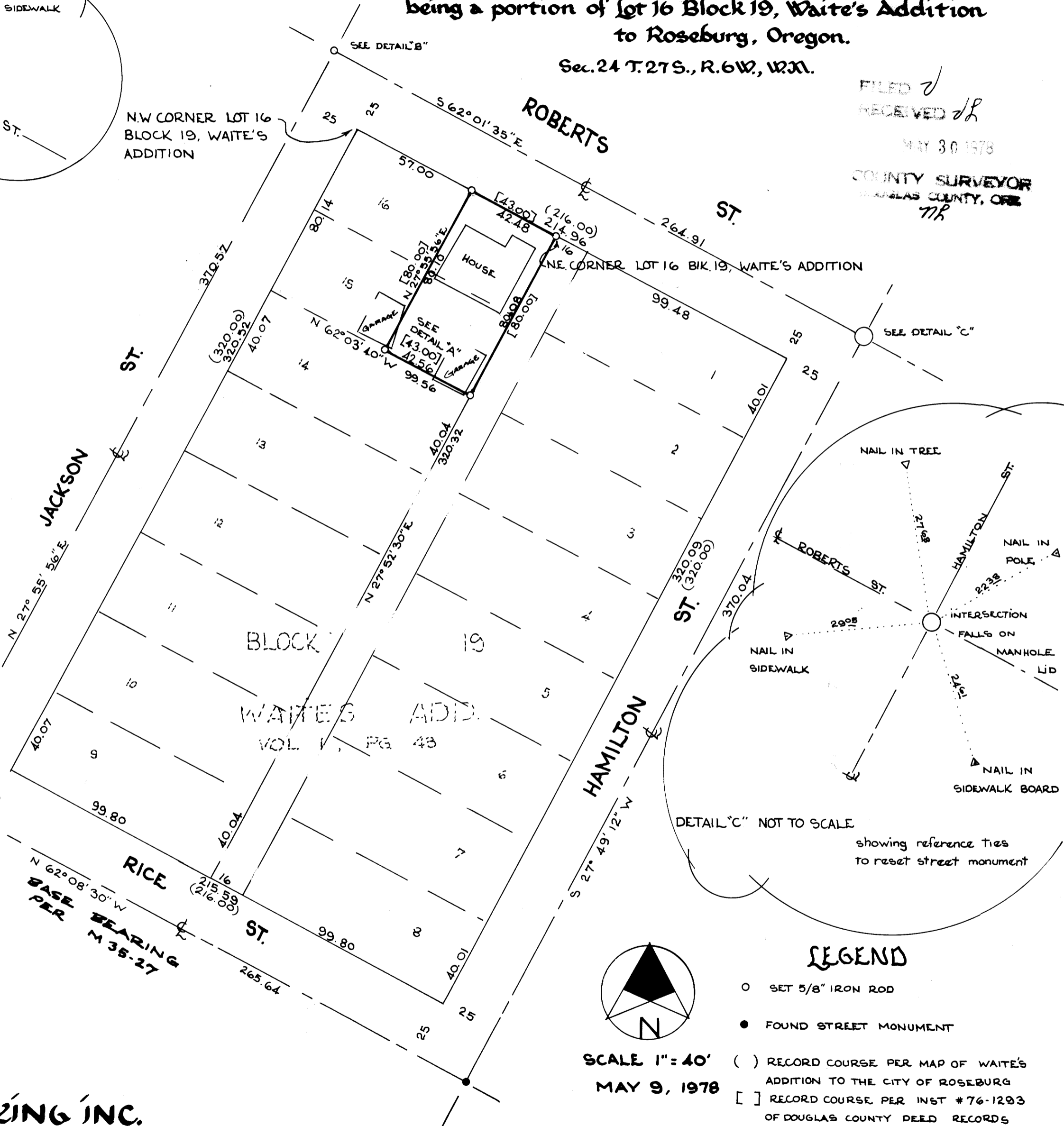
FILED ✓
RECEIVED ✓
MAY 30 1978
COUNTY SURVEYOR
DOUGLAS COUNTY, OREGON
TR

DETAIL "B"
NOT TO SCALE
showing street monument
reset from reference ties



DETAIL "A"
SCALE 1" = 20'

N.W. CORNER LOT 16
BLOCK 19, WAITE'S
ADDITION



SEE DETAIL "C"



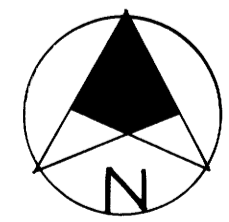
DETAIL "C" NOT TO SCALE
showing reference ties
to reset street monument

STREET MONUMENT
S 27° 55' 56" W 0' 7 1/4"
FROM INTERSECTION
OF CENTERLINES

REGISTERED
PROFESSIONAL
LAND SURVEYOR

Romanso E. Ware

OREGON
NOV. 16, 1973
ROMANSO E. WARE
1005



SCALE 1" = 40'
MAY 9, 1978

- LEGEND**
- SET 5/8" IRON ROD
 - FOUND STREET MONUMENT
 - () RECORD COURSE PER MAP OF WAITE'S ADDITION TO THE CITY OF ROSEBURG
 - [] RECORD COURSE PER INST # 76-1293 OF DOUGLAS COUNTY DEED RECORDS

BHW ENGINEERING & SURVEYING INC.
1205 SE. COURT, ROSEBURG, OREGON. 673-0165

MAP FILE M 77-18

MAP FILE M 77-18