

PROPERTY SURVEY

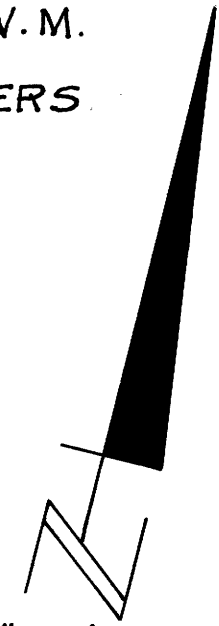
DO NOT REMOVE FROM OFFICE

LOTS 25 & 26 BLOCK 15, PLAT "O" SUBDIVISION,
SUTHERLIN, OREGON
SECTION 17, T25 S, R 5W, W.M.
FOR RICK HOLLAND
BY ALPHA & OMEGA ENGINEERS
MAY, 1978

FILED
RECEIVED

MAY 26 1978

COUNTY SURVEYOR
DOUGLAS COUNTY, ORE.



SCALE 1"=50'

LEGEND

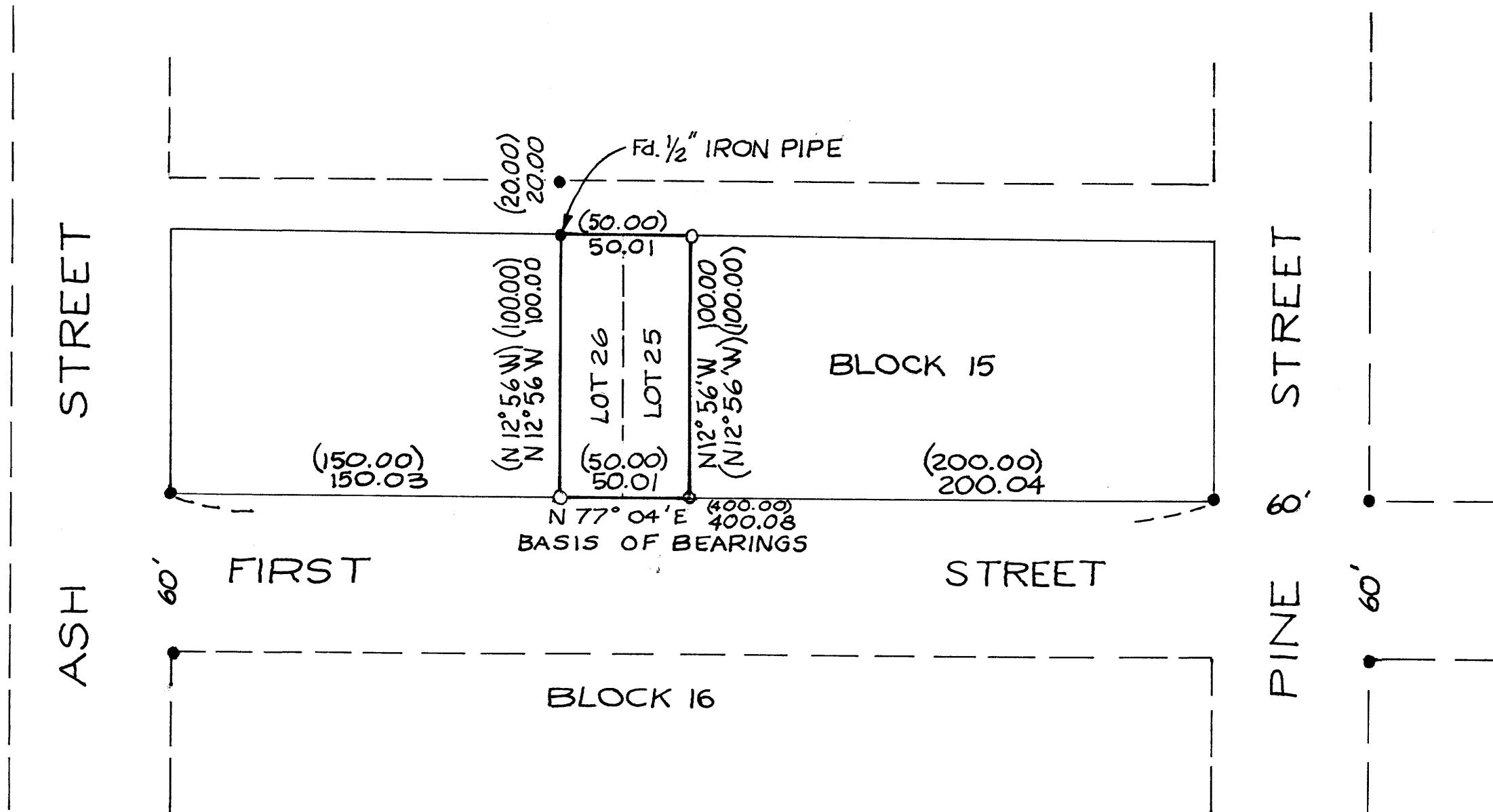
- - FOUND 3/4" IRON PIPE OR AS NOTED.
- - SET 5/8" x 30" REBAR
- () - RECORD DATA
- - - BOUNDARY OF PROPERTY SURVEYED.

REGISTERED
PROFESSIONAL
LAND SURVEYOR

Russell T. Pinard

OREGON
JULY 16, 1971
RUSSELL T. PINARD
958

5-24-78



MAP FILE M71-14

MAP FILE M71-14