

COUNTY SURVEYORS FILE DATA
DO NOT REMOVE FROM OFFICE

**SURVEY TO SET INTERIOR CORNERS
SITUATED IN SEC. 23, T.28S. R.8W. W.M.**

FOR - SUN STUDS INC.
BY - BURTON W. HOLT

COMPLETED APRIL 1978

SCALE 1" = 200'

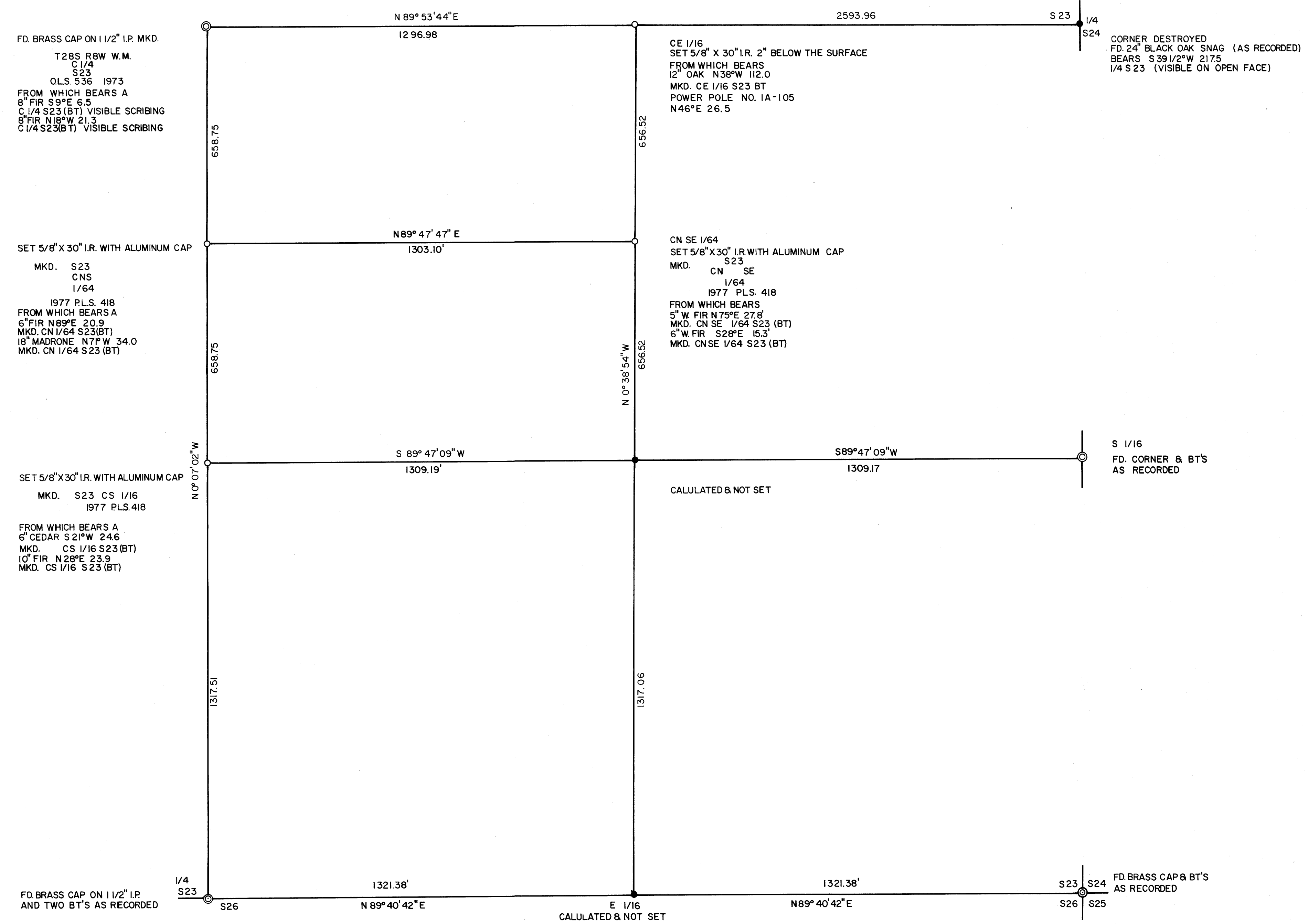
FILED
RECEIVED *BS*
MAY 10 1978
COUNTY SURVEYOR
DOUGLAS COUNTY, ORE

REGISTERED
PROFESSIONAL
LAND SURVEYOR

OREGON
OCTOBER 4, 1957
BURTON W. HOLT
418



BASED ON C.S. FILE NO. 39/2



○ SET AS SHOWN
● FOUND

COUNTY SURVEYORS FILE DATA
DO NOT REMOVE FROM OFFICE

DATE		APPROVED BY		DRAWING NUMBER	
SCALE		DRAWN BY		REVISED	