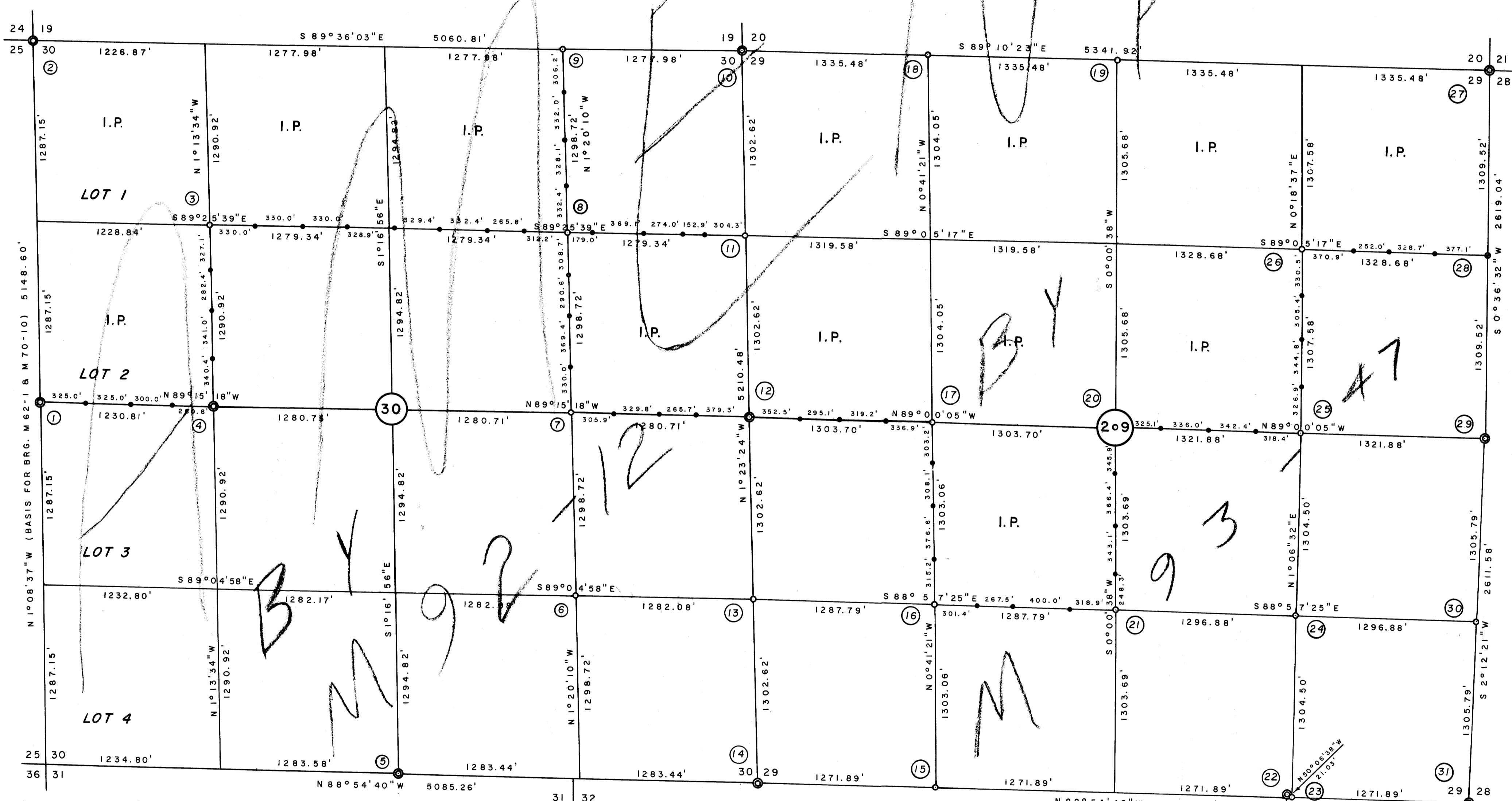


COUNTY SURVEYORS FILE DATA
DO NOT REMOVE FROM OFFICE

PROPERTY SURVEY FOR INTERNATIONAL PAPER CO.

SECTIONS 29 & 30, T21S, R11W.
SCALE 1" = 500'
JUNE 1979

FILED
RECEIVED
JUL 5 1979
COUNTY SURVEYOR
DOUGLAS COUNTY, ORE.



LEGEND

- CORNERS FOUND
- SET 1/4" I.P./Br. CAP
- SET 5/8" I.R. (line stakes)
- SET 3/4" I.R.

REGISTERED
PROFESSIONAL
LAND SURVEYOR

Richard J. Mintz

OREGON
MAY 19, 1960
RICHARD J. MINTZ
437

- | | | | |
|---|--|--|---|
| 1. M 62-1, M 70-10 | 10. M 62-1, M 70-10 | 18. I.P./Br. Cap from which:
14" maple brs. N 21° 00' E, 58.1 ft., scribed
20" hemlock brs. S 87° 30' E, 130.2 ft., scribed | 24. I.P./Br. Cap from which:
Power pole #10-34 brs. N 87° E, 264.2 ft.
22" fir brs. N 64° W, 111.0 ft., scribed
Set steel fence post on North side of I.P. |
| 2. M 62-1, M 70-10 | 11. I.P./Br. Cap from which:
40" cedar brs. S 41° E, 48.4 ft., scribed
36" cedar brs. S 67° W, 41.4 ft., scribed | 19. I.P./Br. Cap from which:
22" cedar brs. N 13° E, 44.1 ft., scribed
42" cedar stump brs. S 56° 30' W, 13.2 ft.
to a 50d nail in face; scribed | 25. I.P./Br. Cap from which:
28" fir brs. N 27° 30' E, 34.5 ft., scribed
42" cedar brs. S 88° 30' W, 42.8 ft., scribed |
| 3. I.P./Br. Cap from which:
30" fir brs. S 1° W, 21.6 ft., scribed
34" cedar brs. N 60° W, 15.6 ft., scribed | 12. M 70-10 | 20. I.P./Br. Cap from which:
40" fir brs. N 22° 00' E, 47.6 ft., scribed
28" maple brs. N 73° 30' E, 58.1 ft., scribed | 26. I.P./Br. Cap from which:
38" fir brs. N 61° 30' E, 33.2 ft., scribed
26" maple brs. S 2° 30' E, 36.0 ft., scribed |
| 4. M 70-10 | 13. I.P./Br. Cap from which:
20" fir brs. S 57° 30' E, 18.3 ft., scribed
30" fir brs. N 40° 15' W, 26.3 ft., scribed | 21. I.P./Br. Cap from which:
48" fir brs. N 41° E, 55.5 ft., scribed
20" multi-trunk maple brs. S 22° 45' E, 105.0 ft., scribed | 27. I.P./Br. Cap, BLM 1960; M 34-30 |
| 5. M 70-10 | 14. M 70-10 | 22. CS 51/30, M 15-23, M 70-10 | 28. 3/4" I.R., SE base of 26" fir from which:
24" fir brs. S 16° 30' E, 15.4 ft., scribed
26" fir brs. N 36° 00' W, 0.9 ft. to 50d nail
in face; scribed. Note, I.R. is 0.80 ft.
South and 0.60 ft. East of true point. |
| 6. I.P./Br. Cap from which:
8" cedar brs. S 3° 30' W, 36.0 ft., scribed | 15. I.P./Br. Cap from which:
28" fir brs. N 35° 30' E, 69.7 ft., scribed
24" fir brs. S 28° 45' E, 26.0 ft., scribed | 23. I.P./Br. Cap from which:
24" hemlock brs. S 14° E, 71.2 ft., scribed
C.C. for Sections 32/33 ('T' Iron) brs. N 50° 06'
38" W, 21.03 ft.
Set steel fence post on North side of I.P. | 29. M 34-30, replace 3/4" I.P. with 1 1/4" I.P./Br. Cap
from which:
12" fir brs. N 52° E, 12.6 ft., scribed
18" fir brs. S 9° W, 16.6 ft., scribed
14" fir brs. S 25° E, 9.7 ft., overgrown blaze |
| 7. I.P./Br. Cap from which:
12" white fir brs. N 52° 15' W, 73.2 ft., scribed
12" white fir brs. N 10° 30' W, 76.9 ft., scribed | 16. I.P./Br. Cap from which:
32" fir brs. N 85° 30' E, 29.4 ft., scribed
68" fir brs. S 14° 00' W, 50.8 ft., scribed | | |
| 8. I.P./Br. Cap from which:
36" cedar brs. S 17° E, 29.7 ft., scribed
16" fir brs. N 81° W, 21.8 ft., scribed | 17. I.P./Br. Cap from which:
24" alder brs. N 75° 15' E, 44.3 ft., scribed
12" hemlock brs. N 32° 00' W, 32.3 ft., scribed | | |
| 9. I.P./Br. Cap from which:
42" fir brs. N 74° 15' E, 28.0 ft., scribed
28" cedar brs. S 20° 00' W, 30.6 ft., scribed | | | |

30. I.P./Br. Cap from which:
16" maple brs. S 73° 15' E, 21.2 ft., scribed
60" hemlock brs. N 35° 15' W, 34.4 ft., scribed

31. M 70-10

Note: Distances are taken to a 50d nail at the center of each bearing tree unless otherwise noted.

COUNTY SURVEYORS FILE DATA
DO NOT REMOVE FROM OFFICE