

# SURVEY FOR SUN STUDS

## IN SECTION 20, T.32S., R.1W.W.M.

### BY: BURTON W. HOLT

AUGUST 1974 SCALE: 1"=400'

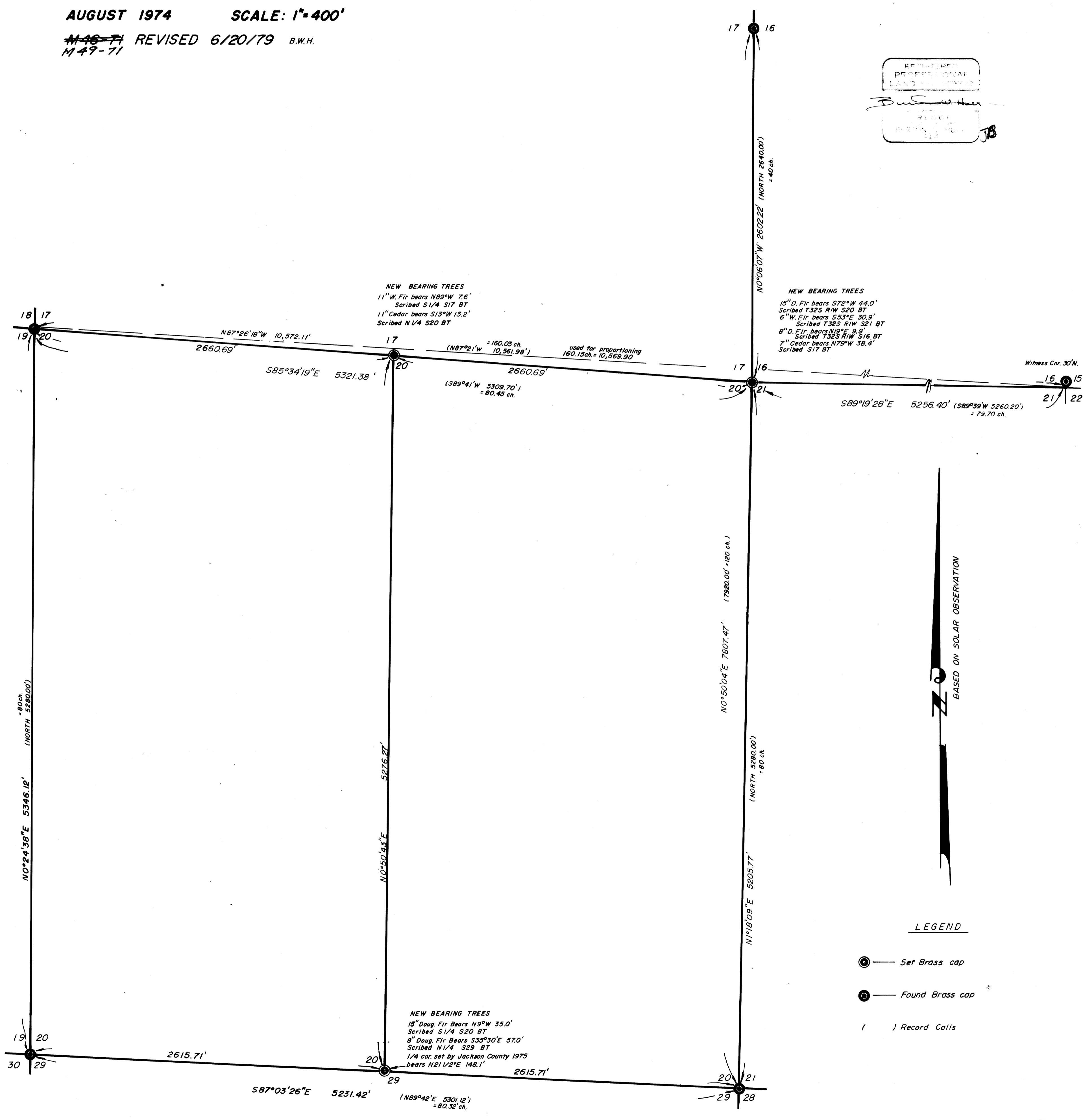
~~M 46-71~~ REVISED 6/20/79 B.W.H.  
M 49-71

FILED  
RECEIVED

COUNTY SURVEYOR  
DOUGLAS COUNTY, ORE.  
JB

REGISTERED  
PROFESSIONAL  
LAND SURVEYOR

Burton W. Holt  
STATE OF OREGON  
NO. 12345  
JB



MAP FILE

MAP FILE M70-72