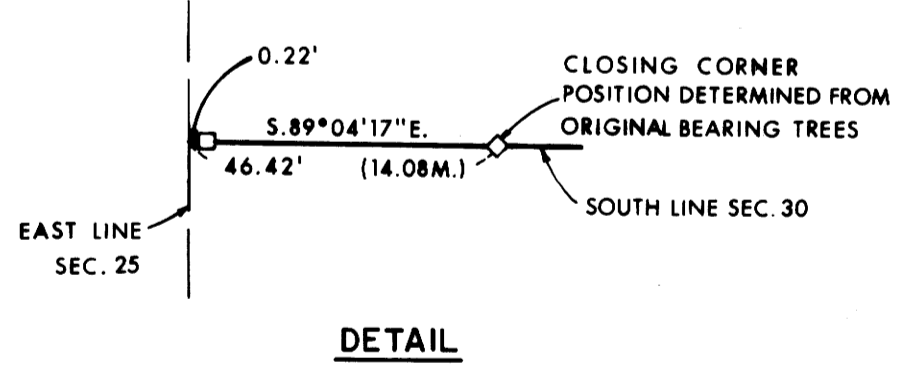
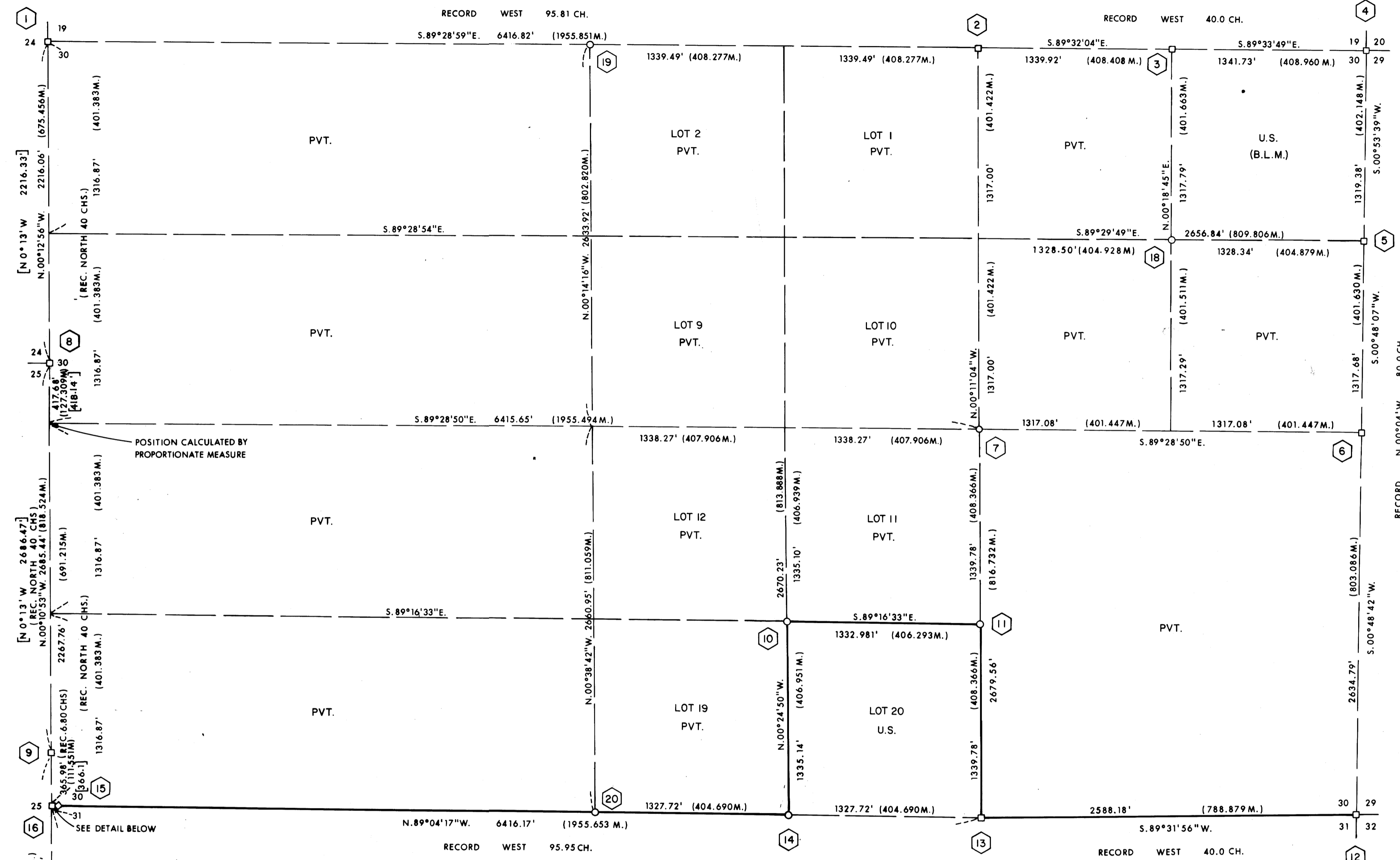


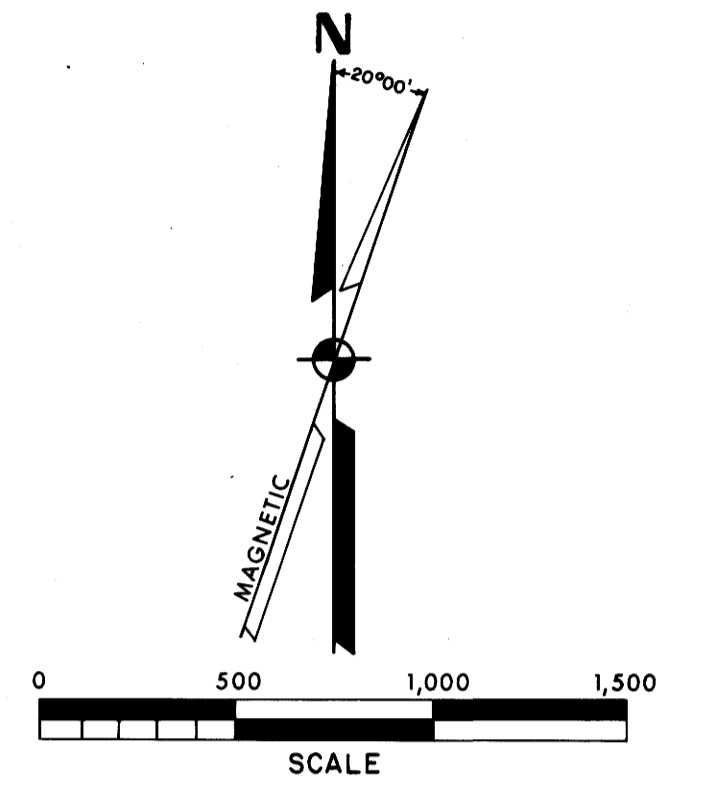
DESCRIPTION OF MONUMENTS AND ACCESSORY TIES

- 1 Found B.L.M. brass capped monument stamped: T255 R2W T255 R1W  
From which: A 36" dia. fir bears N 43° E 36.8 ft scribe partially visible  
A 4" dia. fir bears S 70 1/2° E 55.2 ft marked with X  
A 24" hemlock stump bears S 37 3/4° E 11.5 ft scribe visible on partially healed face  
S24 | S19  
          | S30  
1978
- 2 Found B.L.M. brass capped monument stamped: T255 R1W  
From which: A 8" dia. fir bears S 64° W 35.6 ft scribed 1/4 S30 BT  
A 8" dia. hemlock bears N 54 3/4° E 16.8 ft scribed 1/4 S19 BT  
1978
- 3 Found B.L.M. brass capped monument stamped: T255 R1W  
From which: A 16" dia. fir bears N 51° W 7.2 ft scribed E 1/16 S19 BT  
A 15" dia. fir bears S 20 1/4° E 6.5 ft scribed E 1/16 S30 BT  
1978
- 4 Found 1" iron pipe with brass cap stamped: County Surveyor's Office  
From which: A 30" dia. fir bears N 66 1/2° E 12.0 ft shows scar  
A 24" dia. fir bears S 71 3/4° E 7.7 ft shows scar  
A 30" fir bears S 43° W 26.3 ft shows scar  
A 30" fir bears N 43° W 55.0 ft shows scar  
19 | 20  
30 | 29  
1967
- 5 Found B.L.M. brass capped monument stamped: T255 R1W  
From which: A 16" dia. fir bears N 56° W 8.9 ft scribed N 1/16 S30 BT  
A 15" dia. fir bears S 62 3/4° E 6.9 ft scribed N 1/16 S29 BT  
N 1/16 S30 | S29  
1978
- 6 Found B.L.M. brass capped monument stamped: T255 R1W  
From which: A 8" fir bears N 47° W 31.0 ft scribed 1/4 S30 BT  
A 10" fir bears N 56 1/2° E 33.0 ft scribed 1/4 S29 BT  
1978
- 7 Set 2 1/2" x 30" G.I. pipe with 3" dia. brass cap stamped: T255 R1W  
From which: A 8" dia. fir bears N 40 3/4° E 13.3 ft scribed C 1/4 S30 BT  
A 8" dia. fir bears S 0 3/4° E 12.3 ft scribed C 1/4 S30 BT  
C 1/4 + S30  
PLS 961 1979
- 8 Found 1" G.I. pipe with brass cap stamped: Douglas County Surveyor's Office  
From which: A 38" dia. fir stump bears S 78 1/2° W 37.0 ft scribed T255 R2W S25  
A 10" dia. hemlock bears S 50° W 121.9 ft scribed T255 R2W S25 CS BT  
Chisled "+" in 18" x 24" rock outcrop bears N 67 1/2° W 54.45 ft  
R S24 | S30 R  
2 | 1  
W S25 | W  
T255  
1978
- 9 Found 1 1/4" dia. iron pipe with 2" dia. plate welded on top  
From which: A 30" dia. fir bears N 55 1/2° W 37.7 ft scribe partially visible  
A 30" dia. fir bears S 11 1/2° W 58.6 ft scribe partially visible on upper face  
1978
- 10 Set 2 1/2" x 30" G.I. pipe with 3" dia. brass cap stamped: T255 R1W  
From which: A 6" dia. fir bears S 35° E 7.8 ft SW 1/16 + S30  
A 20" dia. fir bears S 35° W 7.7 ft PLS 961 1979  
A 20" dia. fir bears S 35° W 7.7 ft scribed SW 1/16 S30 BT
- 11 Set 2 1/2" x 30" G.I. pipe with 3" dia. brass cap stamped: T255 R1W  
From which: A 14" dia. fir bears S 64° W 30.3 ft S 1/16 | S30  
A 12" dia. fir bears S 16 1/2° W 17.6 ft C  
A 12" dia. fir bears S 16 1/2° W 17.6 ft scribed CS 1/16 S30 BT  
PLS 961 1979
- 12 Found B.L.M. brass capped monument stamped: T255 R1W  
From which: A 8" dia. fir bears N 67 1/2° E 24.6 ft scribed T255 R1W S29 BT  
A 16" dia. fir bears S 15 1/2° E 51.2 ft scribed T255 R1W S32 BT  
A 10" dia. fir bears S 48° W 66.6 ft scribed T255 R1W S31 BT  
A 10" dia. fir bears N 15° W 13.4 ft scribed T255 R1W S30 BT  
30 | 29  
31 | 32  
1978
- 13 Found B.L.M. brass cap cemented to rock outcrop stamped: T255 R1W  
From which: A 16" dia. fir bears S 55° E 72.6 ft S30  
A 24" dia. fir bears N 62° E 72.1 ft S31  
shows scar  
1978
- 14 Set 2 1/4" x 30" G.I. pipe with 3" dia. brass cap stamped: T255 R1W  
From which: A 8" dia. fir bears N 22 1/2° W 62.2 ft W 1/16 | S30  
A 20" dia. fir bears S 53° E 48.8 ft S31  
A 20" dia. fir bears S 53° E 48.8 ft scribed W 1/16 S31 BT  
PLS 961 1979



- 15 No monument found and nothing set at corner position  
S25 | S30 C  
          | S31 C
- 16 Found 1 1/4" dia. iron pin  
From which: A 15" dia. hemlock bears N 44° W 18.8 ft scribe visible in partially healed face  
A 24" dia. cedar bears S 36° E 32.0 ft scribed T255 R1W S31
- 17 Found 1" iron pipe with brass cap stamped: T255 R2W  
From which: A 40" dia. fir stump bears S 28° W 43.0 ft shows scar  
A 8" dia. fir bears S 32° W 42.9 ft shows scar  
A 40" dia. fir bears N 68° W 40.0 ft shows scar  
A 8" dia. fir bears N 33 1/2° W 18.5 ft scribe partially visible  
25 |  
36 |  
1975

- 18 Set 2 1/2" x 30" G.I. pipe with 3" dia. brass cap stamped: T255 R1W  
From which: A 14" dia. fir bears N 22° E 8.6 ft NE 1/16 + S30  
A 10" dia. fir bears S 19 1/2° E 17.2 ft PLS 961 1979  
A 10" dia. fir bears S 19 1/2° E 17.2 ft scribed NE 1/16 S30 BT
- 19 Set 2 1/2" x 30" G.I. pipe with 3" dia. brass cap stamped: T255 R1W  
From which: A 8" dia. fir bears N 86° E 46.8 ft 1/16 | S19 80  
A 7" dia. hemlock bears S 52° W 44.3 ft S30  
A 7" dia. hemlock bears S 52° W 44.3 ft scribed 1/16 S30-80 BT  
PLS 961 1979
- 20 Found BT's: A 20" fir bears N 46° E 5.4 ft  
has a healed scar  
A 36" fir bears S 20° W 3.5 ft scribe is visible
- 21 Set 2 1/2" x 30" G.I. pipe with 3" dia. brass cap stamped: T255 R1W  
From which: A 36" dia. fir bears N 60° 11' E 18.3 ft 1/16 | S30 80  
A 30" dia. fir bears S 21° 30' W 59.7 ft S31  
A 30" dia. fir bears S 21° 30' W 59.7 ft scribed 1/16 S31-80 BT  
PLS 961 1979
- 22 Found: A corner post, rotted and out of position scribed "RLS 253"  
A 48" fir bears S 30 1/2° E 5.0 ft scribe is visible



LEGEND:  
□ = FOUND MONUMENT AS SHOWN  
○ = SET MONUMENT AS SHOWN  
— = TRUE LINE POSTED WITH STEEL FENCE POSTS AND GOVERNMENT PROPERTY SIGNS.  
BASIS OF BEARINGS: SOLAR OBSERVATION  
FIELD BOOKS REFERENCED UNDER CONTRACT NO. 53-04T1-9-18, FIELD BOOKS 1-5  
CORNERS ESTABLISHED BY THE BUREAU OF LAND MANAGEMENT IN 1978 WERE HELD ON THIS SURVEY.  
B.L.M. SURVEY IS PENDING APPROVAL.  
[ ] RECORD PER V.W. HOSFORD SURVEY IN 1949 & 1950

I, LARRY J. FRIAR, A REGISTERED LAND SURVEYOR IN THE STATE OF OREGON, HEREBY CERTIFY THAT THIS PLAT AND THE NOTES HEREON ARE A CORRECT REPRESENTATION OF A SURVEY I PERFORMED FOR THE U.S. FOREST SERVICE, IN ACCORDANCE WITH THE STATUTES OF THE STATE OF OREGON AND THE ARTICLES OF MY CONTRACT.

*Larry J. Friar*  
LARRY J. FRIAR  
REGISTERED LAND SURVEYOR NO. 961

PLAT OF SURVEY  
FOR  
THE UNITED STATES DEPARTMENT OF AGRICULTURE  
UMPUQA NATIONAL FOREST  
GLIDE LAND SURVEY NO. 7  
CONTRACT NO. 53-04T1-9-18  
BEING SECTION 30, TOWNSHIP 25 S., R. 1W., W. 1M  
DOUGLAS CO. SCALE: 1" = 500'  
OREGON APRIL, 1979  
PREPARED BY: FRIAR-MOFFIT SURVEYING CO.  
MEDFORD, OREGON

COUNTY SURVEYORS FILE DATA  
DO NOT REMOVE FROM OFFICE

REGISTERED  
PROFESSIONAL  
LAND SURVEYOR  
*Larry J. Friar*  
LARRY J. FRIAR  
961