

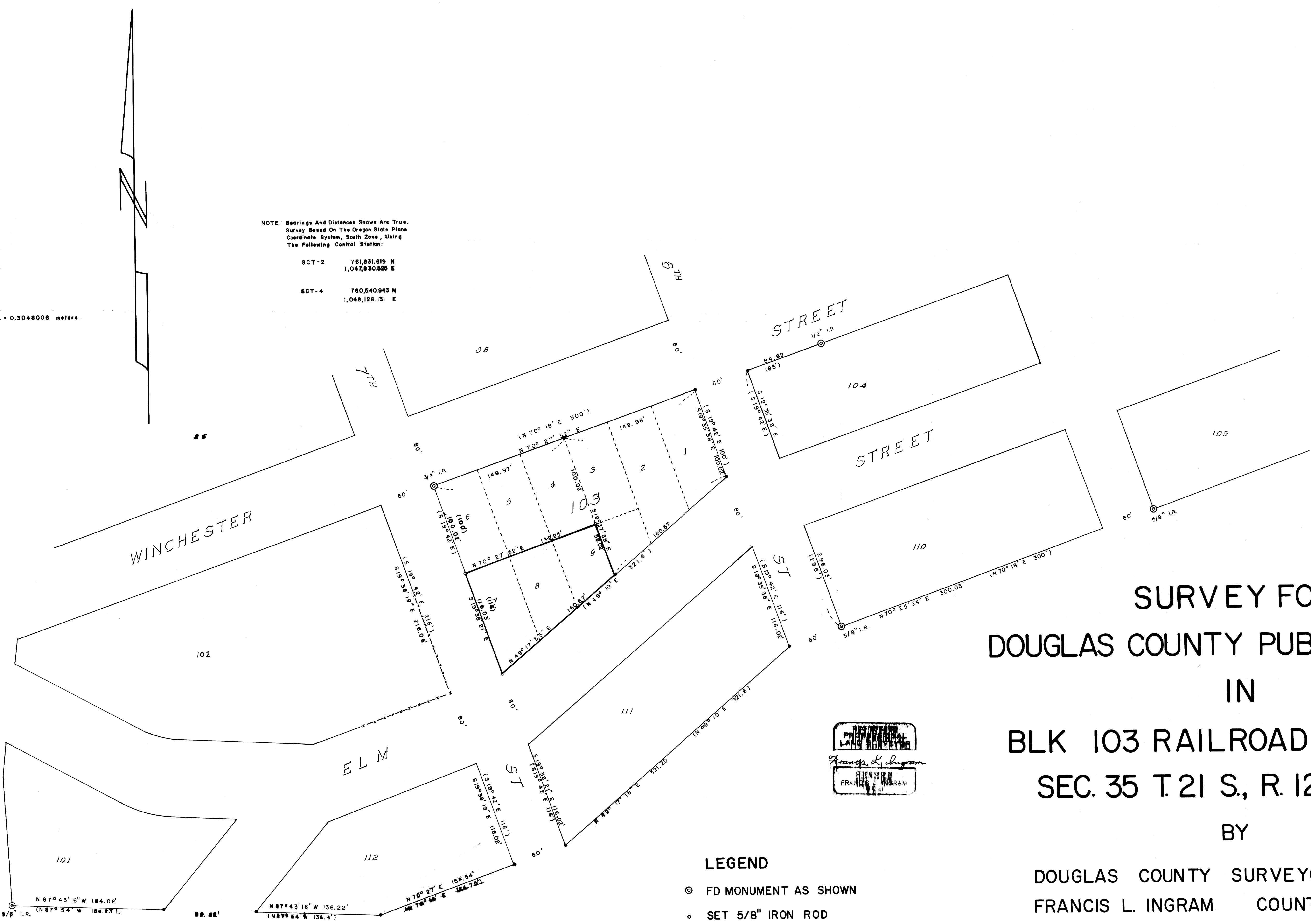
16/09

FILED
RECEIVED JUN 11 1979
COUNTY SURVEYOR
DOUGLAS COUNTY, ORE

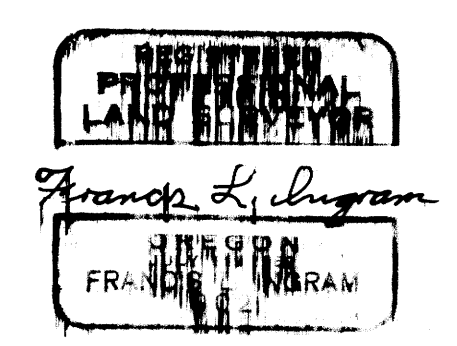
NOTE: Bearings And Distances Shown Are True.
Survey Based On The Oregon State Plane
Coordinate System, South Zone, Using
The Following Control Station:

SCT-2	761,831.819 N	1,047,830.825 E
SCT-4	760,540.943 N	1,048,126.131 E

1 ft. = 0.3048006 meters



SURVEY FOR
DOUGLAS COUNTY PUBLIC WORKS
IN
BLK 103 RAILROAD ADDITION
SEC. 35 T.21 S., R. 12 W., W.M.
BY



- LEGEND**
- ⊙ FD MONUMENT AS SHOWN
 - SET 5/8" IRON ROD
 - COMPUTED NOT SET
 - - - FENCE
 - () RECORD INFO.

DOUGLAS COUNTY SURVEYOR'S OFFICE
FRANCIS L. INGRAM COUNTY SURVEYOR
MAY 1979 SCALE 1" = 50'

C.S. File 60-31
Map File 470-66

CS FILE FOLDER

CONTAINS

MORE

INFORMATION