

PROPERTY SURVEY
 A PARCEL IN WEST HALF SECTION 15
 T 24 S, R 5 W, W.M. DOUGLAS COUNTY, ORE.

COUNTY SURVEYORS FILE DATA
 DO NOT REMOVE FROM OFFICE

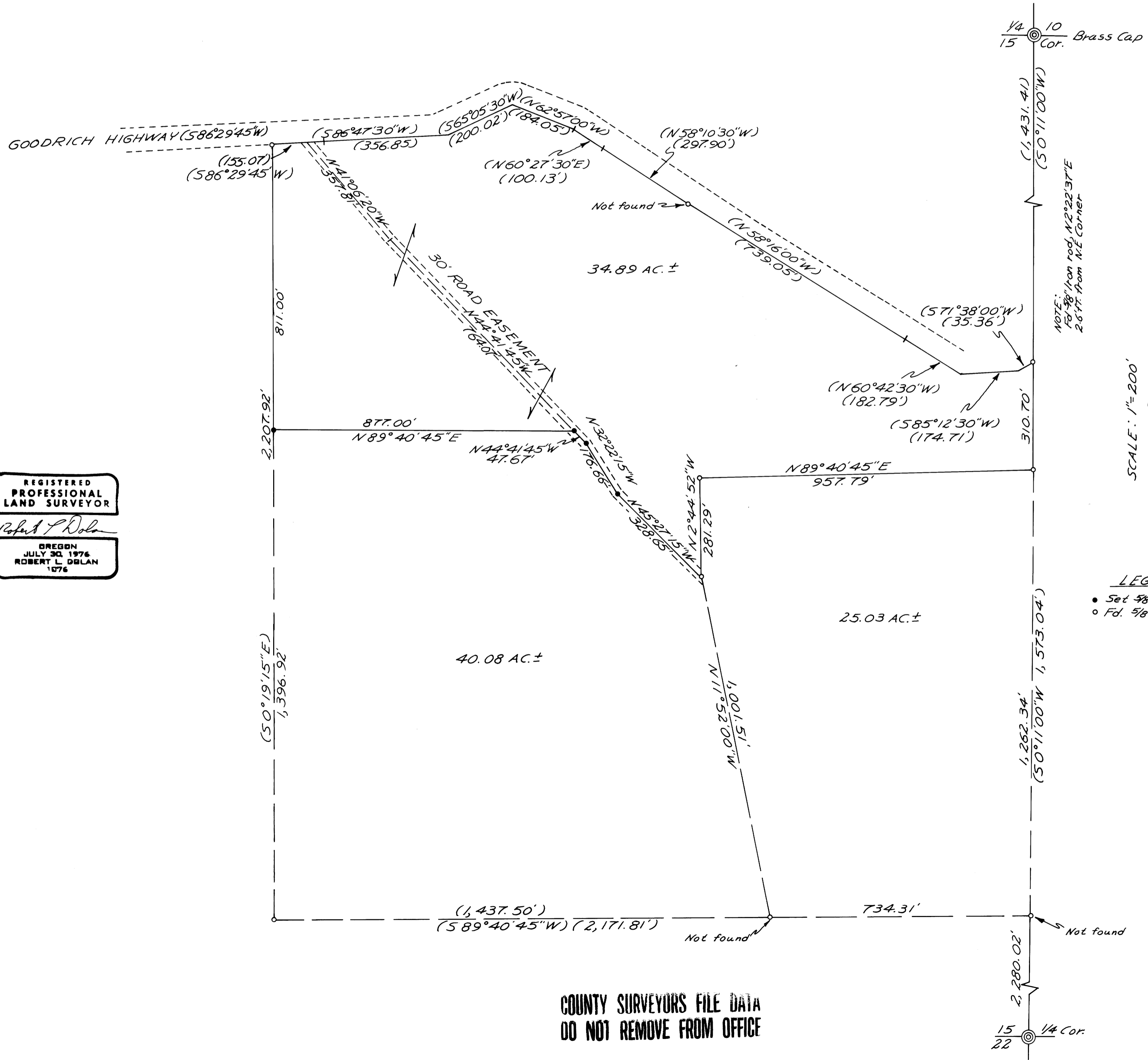
FILED ✓
 RECEIVED RB
 COUNTY SURVEYOR
 DOUGLAS COUNTY, ORE.
 W

FOR: KEN A. WISDOM

DATE: MAY, 1979

MAP PREPARED BY: ROBERT L. DOLAN

REVISION C.S.O. No. M 70-50 & M 49-48



REGISTERED
 PROFESSIONAL
 LAND SURVEYOR
 Robert L. Dolan
 OREGON
 JULY 30, 1976
 ROBERT L. DOLAN
 1976

COUNTY SURVEYORS FILE DATA
 DO NOT REMOVE FROM OFFICE

MAP FILE M 70-50

MAP FILE M 70-63