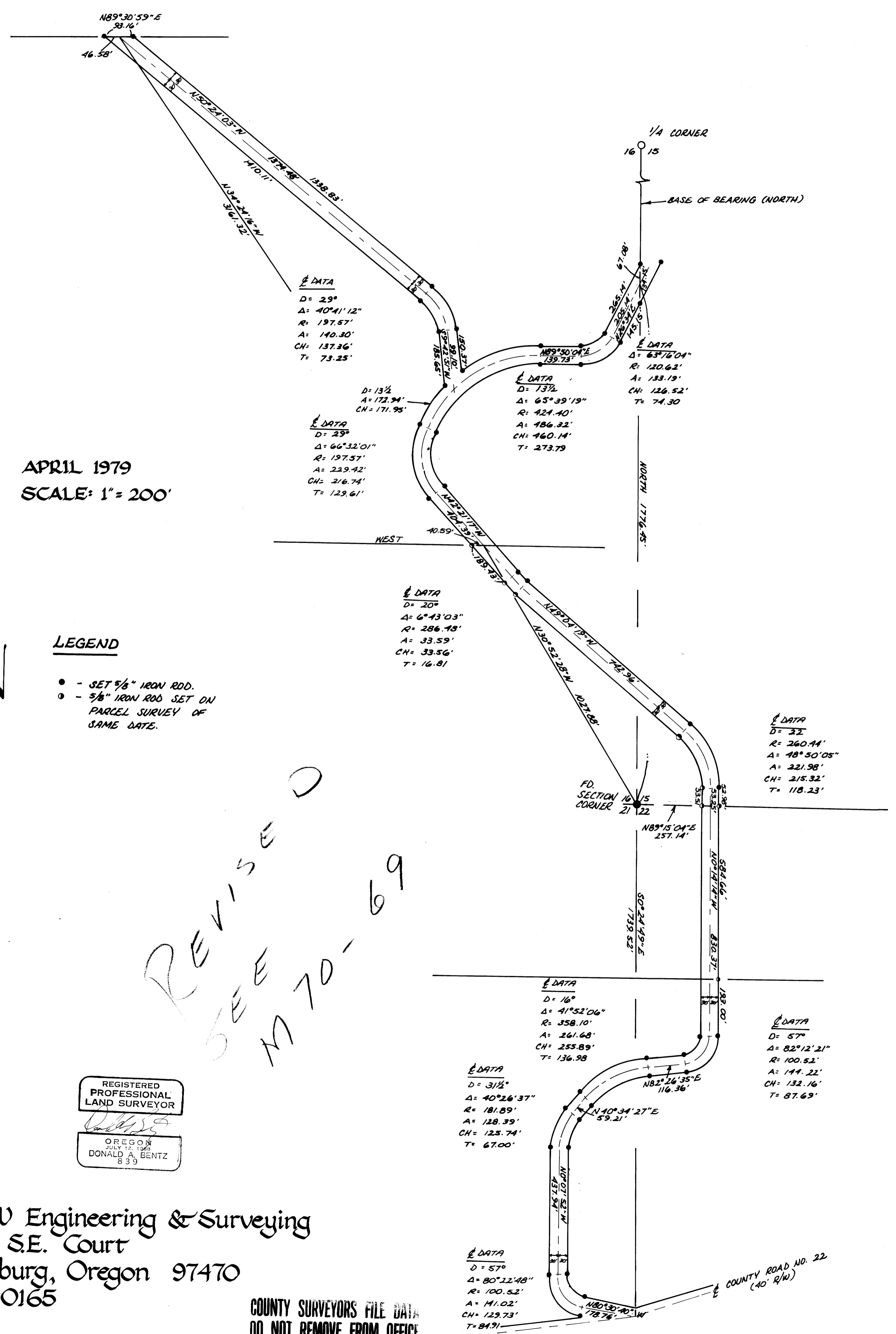


SURVEY FOR DON KNIGHT

To establish and monument 60' Roadway Easement
in Sections 15, 16, 21 & 22, T24S, R4W, W.M.,
Douglas County, Oregon

FILED
RECEIVED *1/8*
MAY 16 1979
COUNTY SURVEYOR
DOUGLAS COUNTY, ORE.
W-78



APRIL 1979
SCALE: 1" = 200'

LEGEND

- - SET 5/8" IRON ROD.
- - 5/8" IRON ROD SET ON PARCEL SURVEY OF SAME DATE.

REGISTERED
PROFESSIONAL
LAND SURVEYOR
Donald A. Bentz
OREGON
JULY 12, 1968
DONALD A. BENTZ
839

BHW Engineering & Surveying
1205 S.E. Court
Roseburg, Oregon 97470
673-0165

REVISED
SEE M 70-69

REVISED - SEE M 70-69 MAP FILE M 70-69