

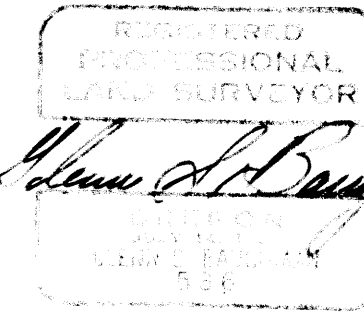
COUNTY SURVEYORS FILE DATA
DO NOT REMOVE FROM OFFICE

SURVEY TO SET PROPERTY CORNERS SITUATED IN SEC. 23, T.28S., R.8W., W.M. FOR: LARRY THOMAS BY: BAUGHMAN SURVEYING SERVICE

JANUARY 1973 SCALE: 1" = 200'

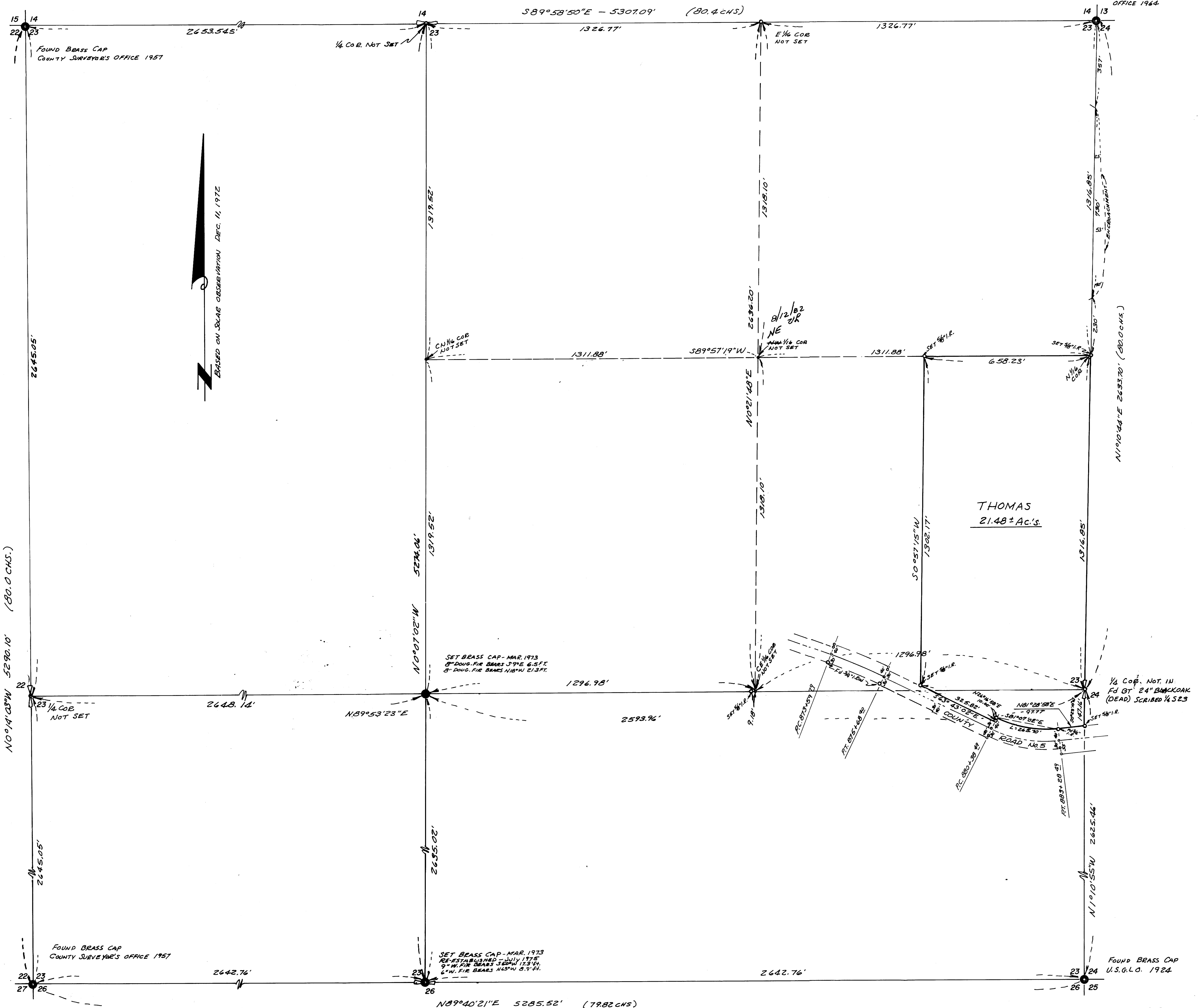
REVISED: APRIL 1978

NOTE: THIS MAP SUPERSEDES THE FOLLOWING MAPS
FILED IN THE DOUGLAS COUNTY SURVEYORS
OFFICE PER M49-10 & M47-76.



FILED
RECEIVED *dh*
APR 21 1978
COUNTY SURVEYOR
DOUGLAS COUNTY, ORE.
dh

FOUND-BRASS CAP
COUNTY SURVEYOR'S
OFFICE 1964



BASED ON SLAB OBSERVATION DEC. 11, 1972

THOMAS
21.48± Ac.'s.

1/2 COR. NOT IN
FD BT 24" BLACKOAK
(DEAD) SCRIBED 1/2 S 23

FOUND BRASS CAP
U.S.G.L.O. 1924

MAP FILE M49-10-6

MAP FILE M49-10-6