

SURVEY IN SECTION 35, T24S, R6W, W.M.

COUNTY SURVEYORS FILE DATA
DO NOT REMOVE FROM OFFICE

FILED
RECEIVED 78

MAY 4 1979

COUNTY SURVEYOR
DOUGLAS COUNTY, ORE.
VW

FOR: GARY BARNETT & ROSEBURG LUMBER CO.

BY: BHW ENGINEERING & SURVEYING

APRIL 1979

LEGEND

- ⊙ - FOUND BRASS CAP
- ⊙ - SET 5/8" IRON ROD
- - SET 5/8" IRON ROD

REGISTERED
PROFESSIONAL
LAND SURVEYOR

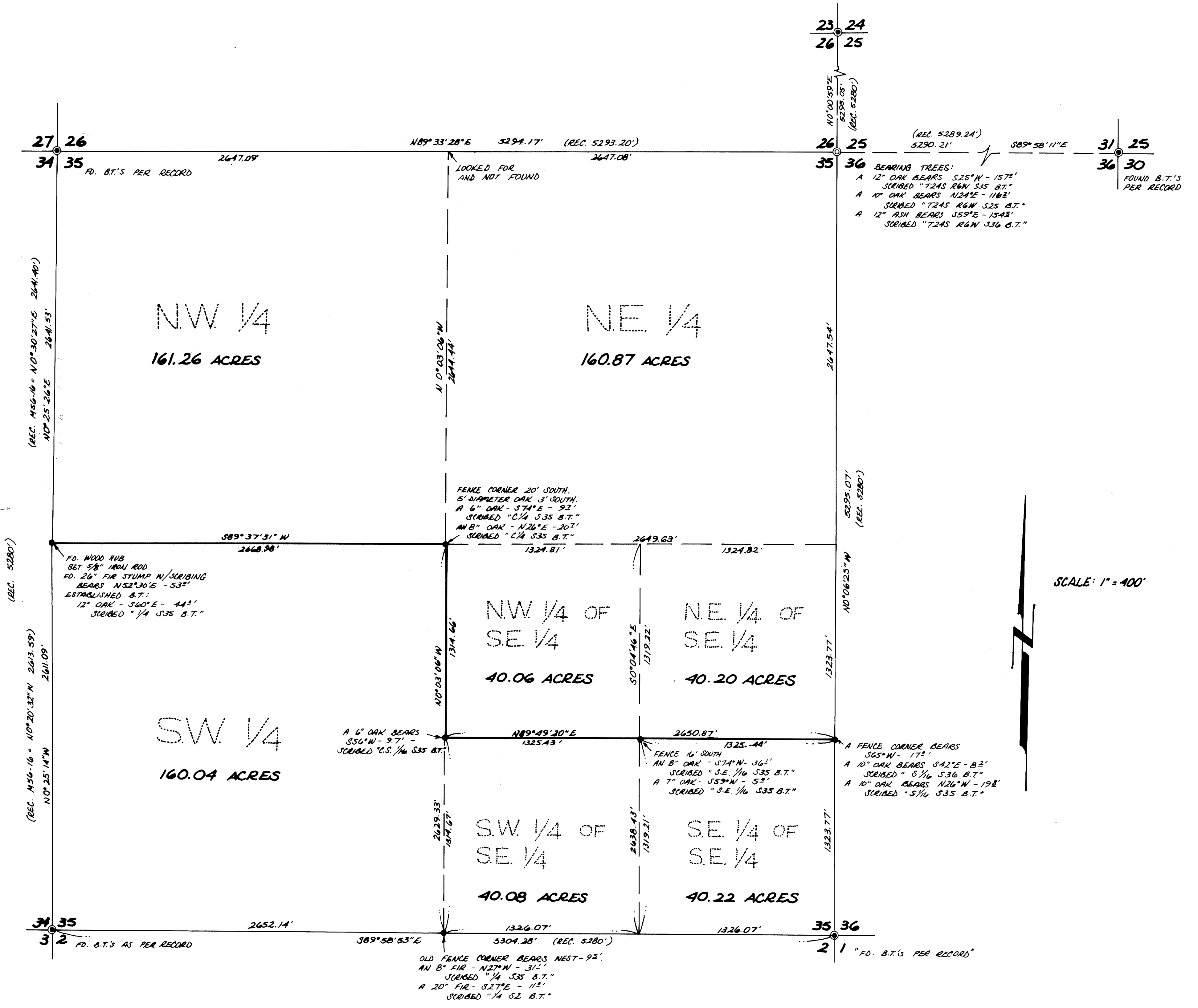
Romanso E. Ware

OREGON
NOV. 18, 1972
ROMANSO E. WARE
1005

NOTE:

SURVEY WAS MADE WITH A JENA 1" SEC.
THEODOLITE AND MAC II E.D.M.

BASE BEARING PER ORIGINAL CADASTRAL
BEARING ON THE WEST LINE OF SECTION 35
FROM THE S.W. CORNER TO THE
N.W. CORNER.



SCALE: 1" = 400'

COUNTY SURVEYORS FILE DATA
DO NOT REMOVE FROM OFFICE

MAP FILE 11-28-52

MAP FILE 11-28-52