

COUNTY SURVEYORS FILE DATA
DO NOT REMOVE FROM OFFICE

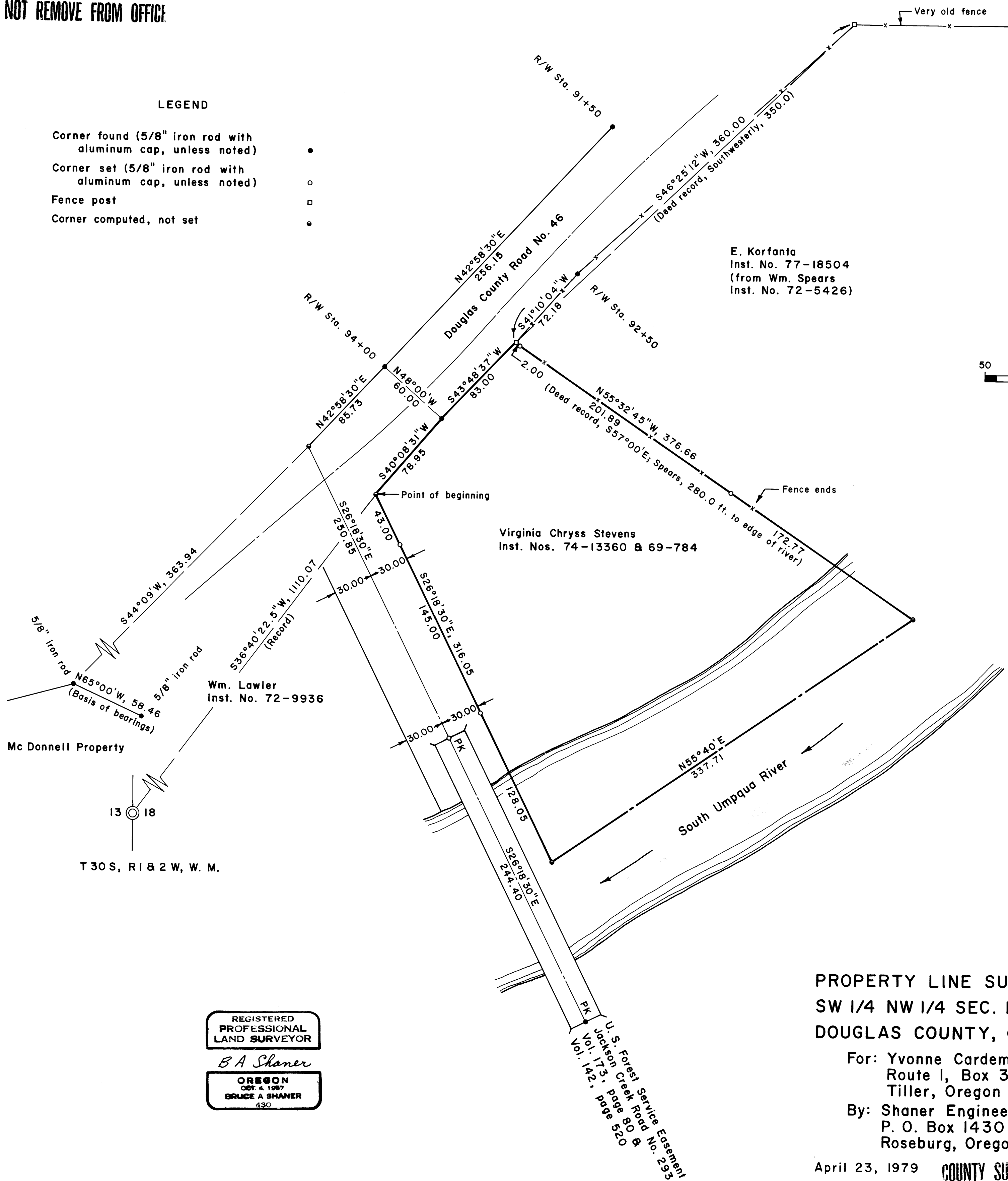
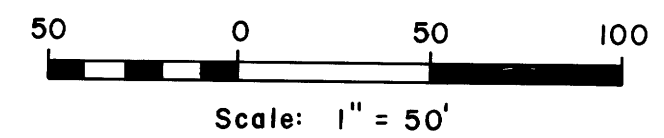
LEGEND

- Corner found (5/8" iron rod with aluminum cap, unless noted) ●
- Corner set (5/8" iron rod with aluminum cap, unless noted) ○
- Fence post □
- Corner computed, not set ◦

FILED
RECORDED
COUNTY SURVEYOR
DOUGLAS COUNTY, ORE.
u



Basis of Bearings:
Survey by Harold Ball
CS Map No. 58/27,
Pins on NE Boundary



REGISTERED
PROFESSIONAL
LAND SURVEYOR
B A Shaner
OREGON
OCT. 4, 1987
BRUCE A SHANER
430

PROPERTY LINE SURVEY IN THE
SW 1/4 NW 1/4 SEC. 18, T 30 S, R 1 W, W. M.,
DOUGLAS COUNTY, OREGON

For: Yvonne Cardemil
Route 1, Box 32
Tiller, Oregon 97484
By: Shaner Engineering, Inc.
P. O. Box 1430
Roseburg, Oregon 97470

April 23, 1979 COUNTY SURVEYORS FILE DATA
DO NOT REMOVE FROM OFFICE