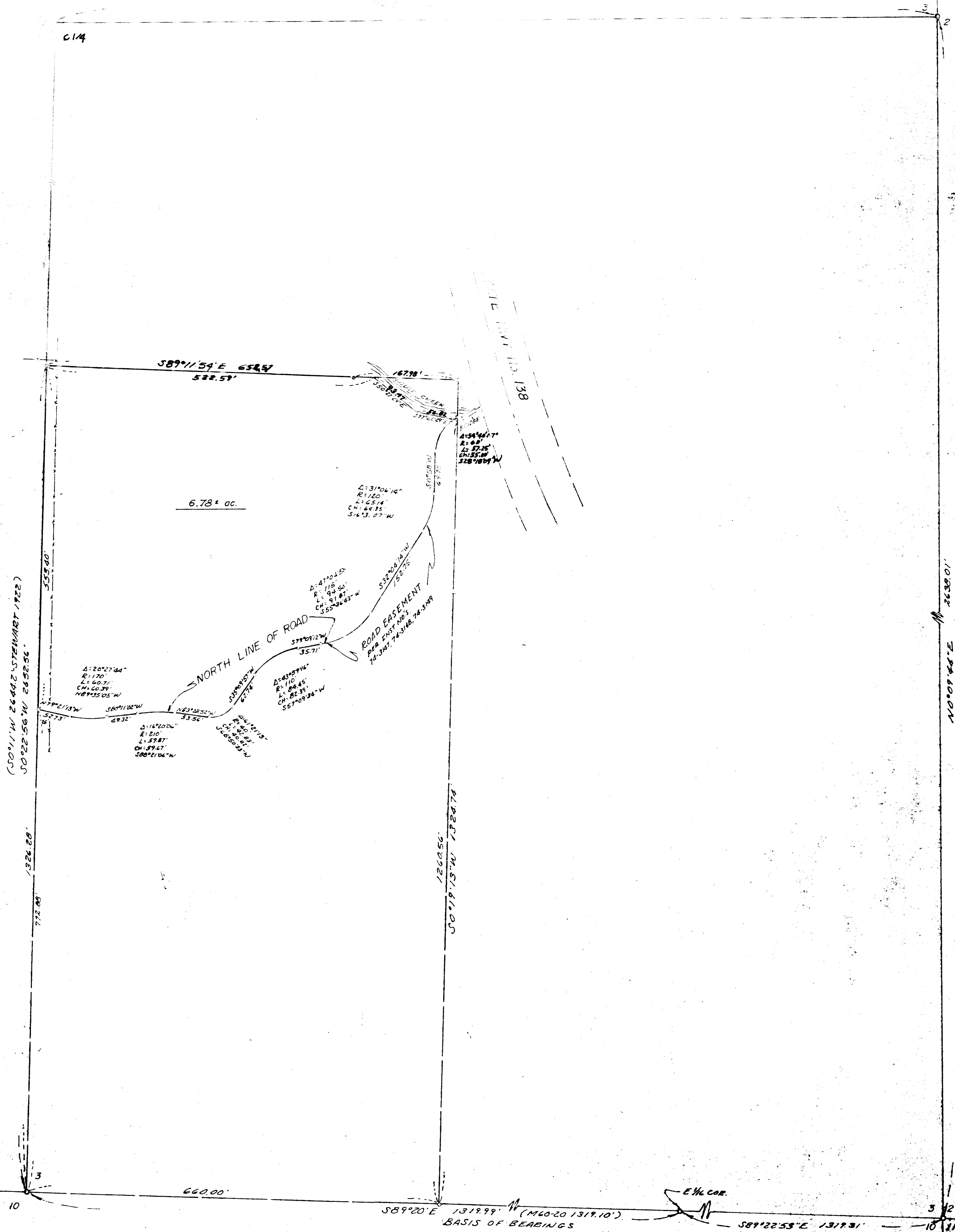


COUNTY SURVEYORS FILE DATA
DO NOT REMOVE FROM OFFICE

FILED
RECEIVED
JAN 20 1979
COUNTY SURVEYOR
DOUGLAS COUNTY, ORE
TB



LEGEND

- Found Brass cap
- Set 1/2" iron rod

THIS COPY MADE FROM
A XEROX 2510
DATE Aug. 10, 89

COUNTY SURVEYORS FILE DATA
DO NOT REMOVE FROM OFFICE

REGISTERED
PROFESSIONAL
LAND SURVEYOR
GLENN S. BAUGHMAN
306

SURVEY FOR PROPERTY CORNERS IN THE W 1/2 SW 1/4 SEC 3 T.25S. R.6W W.M.	
FOR JOSEPH WHITEHEAD	SCALE 1" = 100'
BY BAUGHMAN TECHNICAL SERVICES, INC.	DRAWN BY Eob
DATE: Jan. 1979	APPROVED BY: [Signature]
	DRAWING NUMBER: FM 1-5