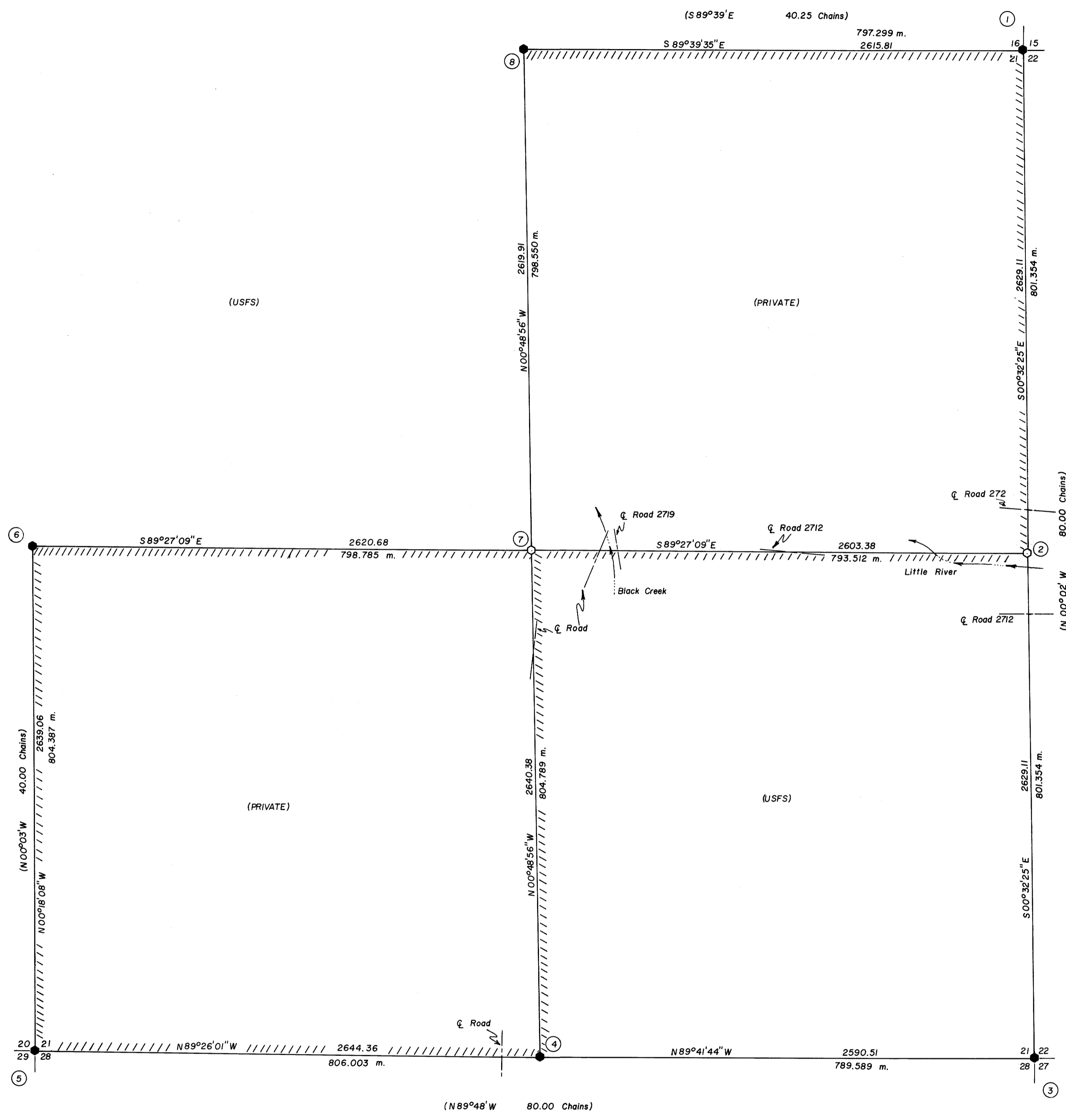
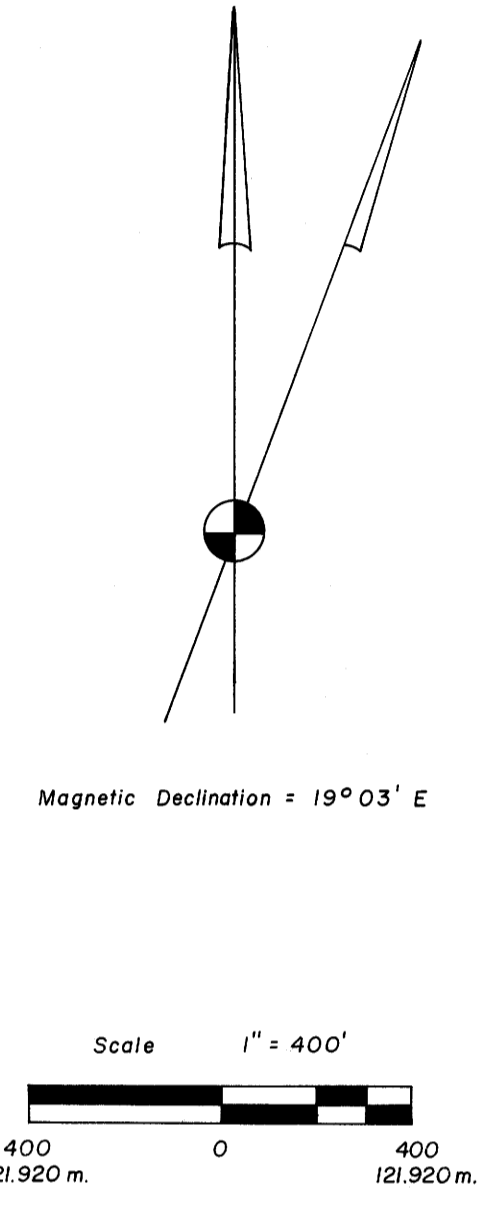


RECORD OF SURVEY
for the U. S. FOREST SERVICE
of SECTION 21, T27S, RIW, W.M.
DOUGLAS COUNTY, OREGON NOVEMBER, 1978

FILED
RECEIVED
COUNTY SURVEYOR
DOUGLAS COUNTY, OREGON
78



- ① NE Corner Section 21
Found Douglas County Surveyor's brass cap extending 18" above ground.
BT's found
36" Fir, N18 1/2°E, 31.7 Ft. (N16°E, 48 Lks.)(Original BT) Healed face
26" Fir, S40°E, 5.3 Ft. (S40°E, 9 Lks.)(Original BT) Face chopped into
26" Fir, N61 3/4°W, 71.5 Ft. (N61°W, 73.3 Ft.) Scribing visible
BT's set
8" Fir, S63 1/2°W, 25.3 Ft. Scribed "T27S RIW S21 BT"
T27S RIW
S16 S15
S21 S22
1969
- ② E 1/4 Corner Section 21
Found no trace of original corner or BT's.
Set 3" brass tablet in rock outcropping
BT's set
16" Fir, N74 3/4°E, 65.2 Ft. Scribed "1/4 S22 BT"
12" Hemlock, N54 1/2°W, 6.1 Ft. Scribed "1/4 S21 BT"
T27S RIW
1/4
S21 S22
1978 PLS 1084
- ③ SE Corner Section 21
Found Douglas County Surveyor's brass cap extending 18" above ground.
Built mound of stone around corner.
BT's found
28" Fir, N64 1/4°E, 42.8 Ft. (N63°E, 66 Lks.)(Original BT) Visible scar
18" Fir Snag, S51°E, 64.2 Ft. (S52°E, 97 Lks.)(Original BT) Scribing visible
22" Fir, S54°E, 70.4 Ft. (S52°E, 69.6 Ft.) Healed face
No trees available to the West because of a 75 foot vertical drop.
T27S RIW
S21 S22
S28 S27
1970
- ④ S 1/4 Corner Section 21
Found Douglas County Surveyor's brass cap extending 18" above ground.
BT's found
32" Hemlock Stump, N66°W, 16.4 Ft. (N65 1/2°W, 25 Lks.)(Original BT) Scribing visible
Original SE BT is now an uproot
14" Hemlock, N05 3/4°E, 29.4 Ft. (N05°E, 29.3 Ft.) No marks visible
20" Hemlock, S80 1/2°E, 46.3 Ft. (S80°E, 46.3 Ft.) Scribing visible
T27S RIW
1/4 S21
S28
1969
- ⑤ SW Corner Section 21
Found Douglas County Surveyor's brass cap extending 18" above ground.
BT's found
30" Fir Stump, N30°E, 70.3 Ft. (N29°E, 107 Lks.)(Original BT) No marks visible
Original SE BT is now an uproot Scribing visible
26" Fir Snag, N33°W, 65.3 Ft. (N34°W, 100 Lks.)(Original BT) Scribing visible
10" Fir, N10 1/2°E, 22.8 Ft. (N09°E, 23.0 Ft.) Healed face
6" Maple, S01 1/2°E, 15.5 Ft. (S03°E, 15.7 Ft.) Scribing visible
8" Maple, S61°W, 20.1 Ft. (S61°W, 20.1 Ft.) Scribing visible
8" Fir, N61 3/4°E, 9.6 Ft. (N59 1/2°E, 9.6 Ft.) Healed face
T27S RIW
S20 S21
S29 S28
1969
- ⑥ W 1/4 Corner Section 21
Found Douglas County Surveyor's brass cap extending 6" above ground.
BT's found
30" Hemlock Stump, N35°E, 30.5 Ft. (N34°E, 46 Lks.)(Original BT) Scribing visible
42" Fir Stump, N54 1/4°W, 39.7 Ft. (N57°W, 39.2 Ft.) Scribing visible
BT's set
14" Hemlock, S28 3/4°E, 69.1 Ft. Scribed "1/4 S21 BT"
T27S RIW
1/4
S20 S21
1969
- ⑦ C 1/4 Corner Section 21
Found 3" X 3" wood post N49°E, 20.0 feet of correct position.
Set 2" X 30" iron pipe with 3" brass cap.
Built mound of stone around corner.
BT's set
18" Hemlock, N18 1/2°E, 52.7 Ft. Scribed "C1/4 S21 BT"
18" Fir, S28 1/4°E, 80.0 Ft. Scribed "C1/4 S21 BT"
T27S RIW
C1/4 S21
1978 PLS 1084
- ⑧ N 1/4 Corner Section 21
Found Douglas County Surveyor's brass cap extending 18" above ground.
BT's found
48" Fir, N02 1/4°E, 7.9 Ft. (North, 12 Lks.)(Original BT) Scribing visible
40" Fir, S51°W, 30.1 Ft. (S50°W, 47 Lks.)(Original BT) Visible scar
T27S RIW
1/4 S16
S21
1969



- NOTES
- 1) Basis of bearings is a solar observation near the W 1/4 corner of Section 21.
 - 2) All BT distances are to the center of the tree.
 - 3) All BT's set have a brass washer, stamped "PLS 1084", nailed at base of lower blaze.
 - 4) (-----) Indicates data of record.
 - 5) // // // // Indicates lines posted.
 - 6) ● Indicates corner monument found as noted.
 - 7) ○ Indicates corner monument set as noted.

I, Jim S. Peterson, a Registered Land Surveyor in the State of Oregon hereby certify that this plat and the notes hereon are a correct representation of a survey I performed during November of 1978, for the U. S. Forest Service, in accordance with the Statutes of the State of Oregon and with the Articles of my contract.

REGISTERED
PROFESSIONAL
LAND SURVEYOR
J. S. Peterson
OREGON
JULY 31, 1978
JIM S. PETERSON
1084