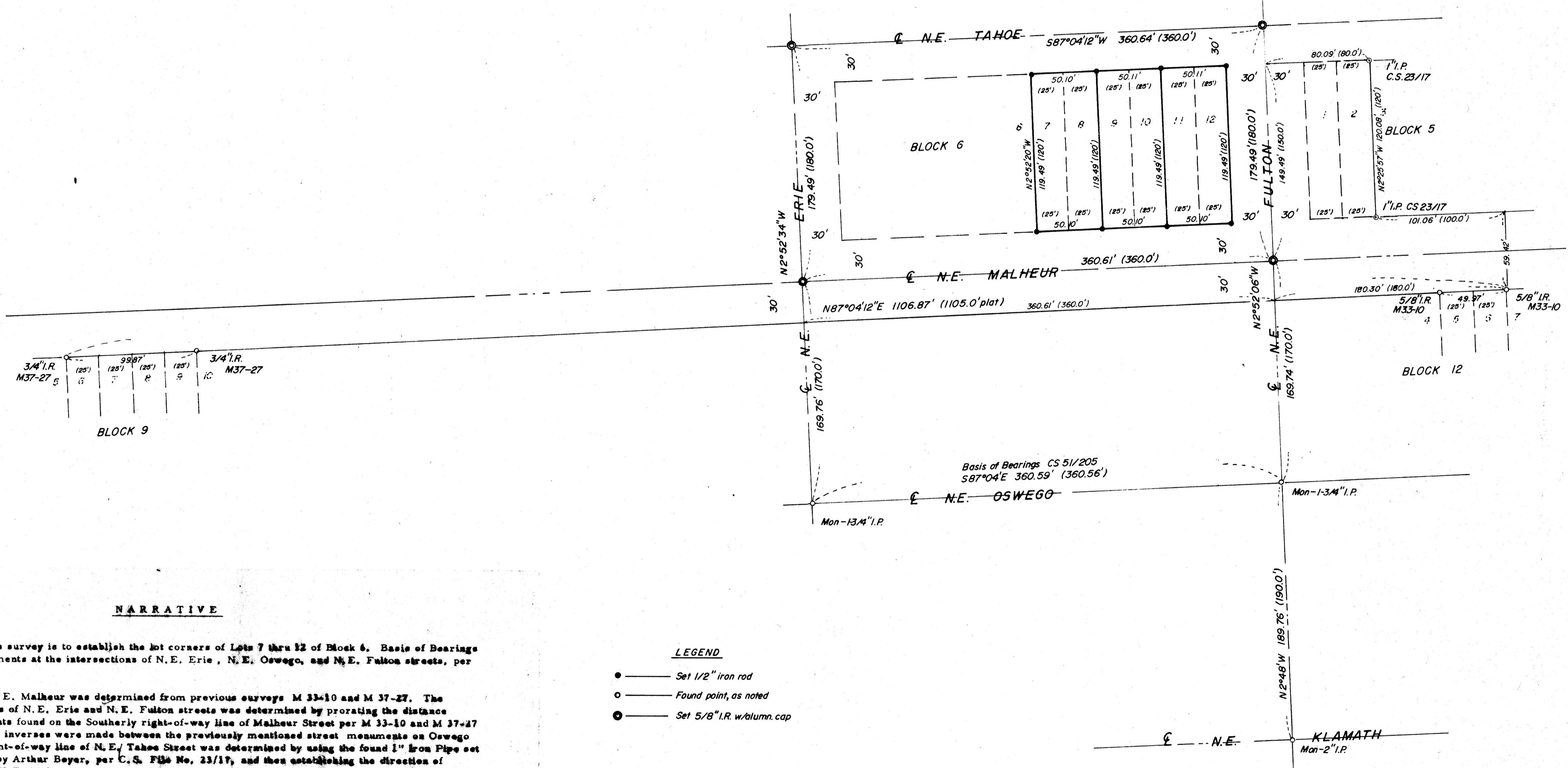


FILED
RECEIVED *th*
APR 21 1978
COUNTY SURVEYOR
DOUGLAS COUNTY, ORE.
TK



NARRATIVE

The purpose of this survey is to establish the lot corners of Lots 7 thru 12 of Block 6. Basis of Bearings are from the street monuments at the intersections of N.E. Erie, N.E. Oswego, and N.E. Fulton streets, per C.S. File No. 51/205.

The direction of N.E. Malheur was determined from previous surveys M 33-10 and M 37-27. The direction of the centerlines of N.E. Erie and N.E. Fulton streets was determined by prorating the distance measured between the points found on the Southerly right-of-way line of Malheur Street per M 33-10 and M 37-27 and the plat distance, then inverses were made between the previously mentioned street monuments on Oswego Street. The Southerly right-of-way line of N.E. Tahoe Street was determined by using the found 1" Iron Pipe set on said right-of-way line by Arthur Boyer, per C.S. File No. 23/17, and then establishing the direction of N.E. Tahoe parallel with N.E. Malheur.

LEGEND

- Set 1/2" iron rod
- Found point, as noted
- ⊙ Set 5/8" I.R. w/alumn. cap

REGISTERED
PROFESSIONAL
LAND SURVEYOR
Glenn S. Baughman
OREGON
JULY 14, 1961
GLENN S. BAUGHMAN
536

SURVEY FOR PROPERTY CORNERS IN BLOCK 6 1st ADDITION KINNEY'S IMPROVED PLAT			
IN SECTION 18, T.27S. R.5W.W.4M.	SCALE 1"=50'	DRAWN BY <i>Eab</i>	
FOR DEE WILSON	REVISOR	REVISOR	
BAUGHMAN TECHNICAL SERVICES INC.			
DATE APRIL 1978	APPROVED BY	DRAWING NUMBER F.M. 1-34	