

COUNTY SURVEYORS FILE DATA
DO NOT REMOVE FROM OFFICE

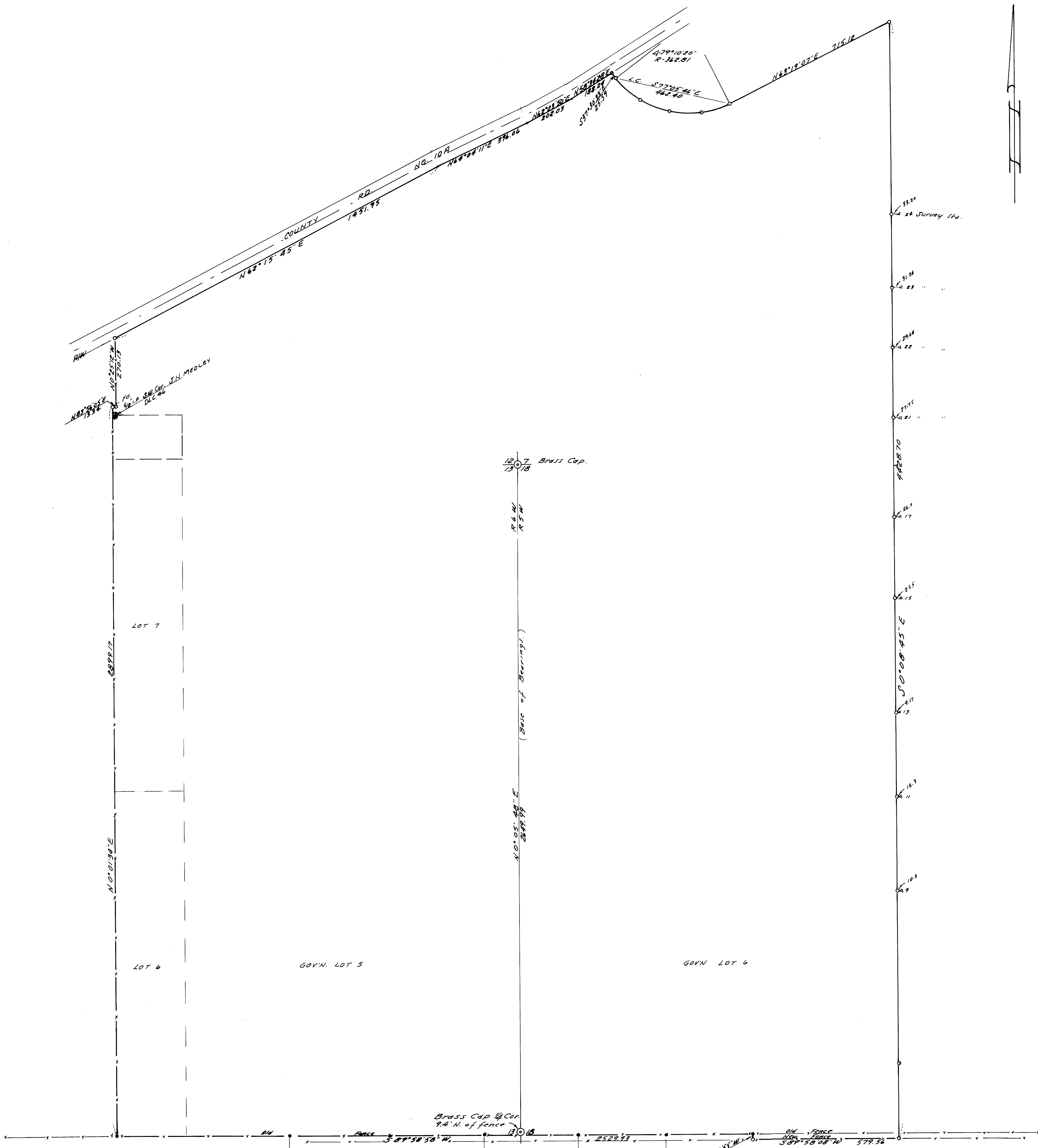
SURVEY IN A PORTION OF ELVIN J. SMITH RANCH
IN SEC. 5 7 & 18 T25S, R5W & SEC. 5 12 & 13 T25S, R6W. W. M.

SURVEYED FOR - ELVIN J. SMITH.
SURVEYED BY - W. S. BARNES

JUNE 1978
SCALE 1" = 200'

FILED ✓
COUNTY SURVEYOR
DOUGLAS COUNTY, ORE.
T

MAP FILE N 70-37...



• Denotes 1/2" iron pipes found.
○ " 1/2" iron rods set.

Base bearing taken from Twp. line R6/R5 -

BLK. 8, PLAT M, S. L. & W. CO.

REGISTERED
PROFESSIONAL
LAND SURVEYOR

W. S. Barnes

OREGON
EST. 23 1977
WILLIAM S. BARNES
1931

COUNTY SURVEYORS FILE DATA
DO NOT REMOVE FROM OFFICE

MAP FILE N 70-37...