

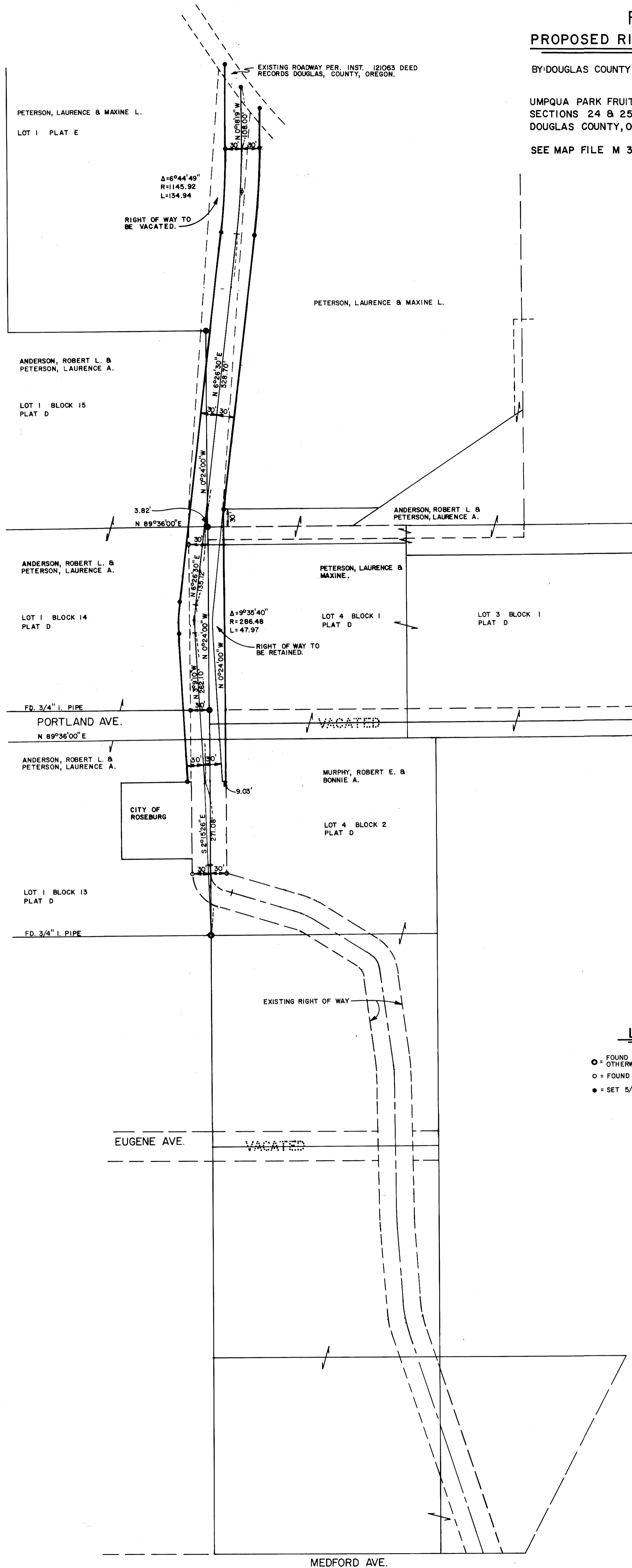
FAIRHILL DRIVE
PROPOSED RIGHT-OF-WAY FOR DEDICATION

BY: DOUGLAS COUNTY DEPT. OF PUBLIC WORKS AUG. 10, 1978

UMPQUA PARK FRUITLANDS, PARTS OF PLATS 'D' & 'E'
SECTIONS 24 & 25, T27S, R6W, W.M.
DOUGLAS COUNTY, OREGON

SEE MAP FILE M 33-40 FOR PRIOR SURVEY

FILED *d*
RECEIVED *df*
COUNTY SURVEYOR
DOUGLAS COUNTY, ORE.
T



SCALE: 1" = 100'
BASIS OF BEARING
EAST LINE OF BLOCKS 13, 14, & 15
PLAT 'D' UMPQUA PARK FRUITLANDS
(N 0°24'00" W) AS SHOWN ON M33-40

- LEGEND**
- = FOUND 3/4" IRON ROD UNLESS OTHERWISE SPECIFIED.
 - = FOUND 5/8" IRON ROD
 - = SET 5/8" IRON ROD

REGISTERED
PROFESSIONAL
LAND SURVEYOR
James F. Gosson
OREGON
SEPTEMBER 22, 1977
JAMES F. GOSSON
1188

M 70 - 30

MAP FILE M 70 - 30