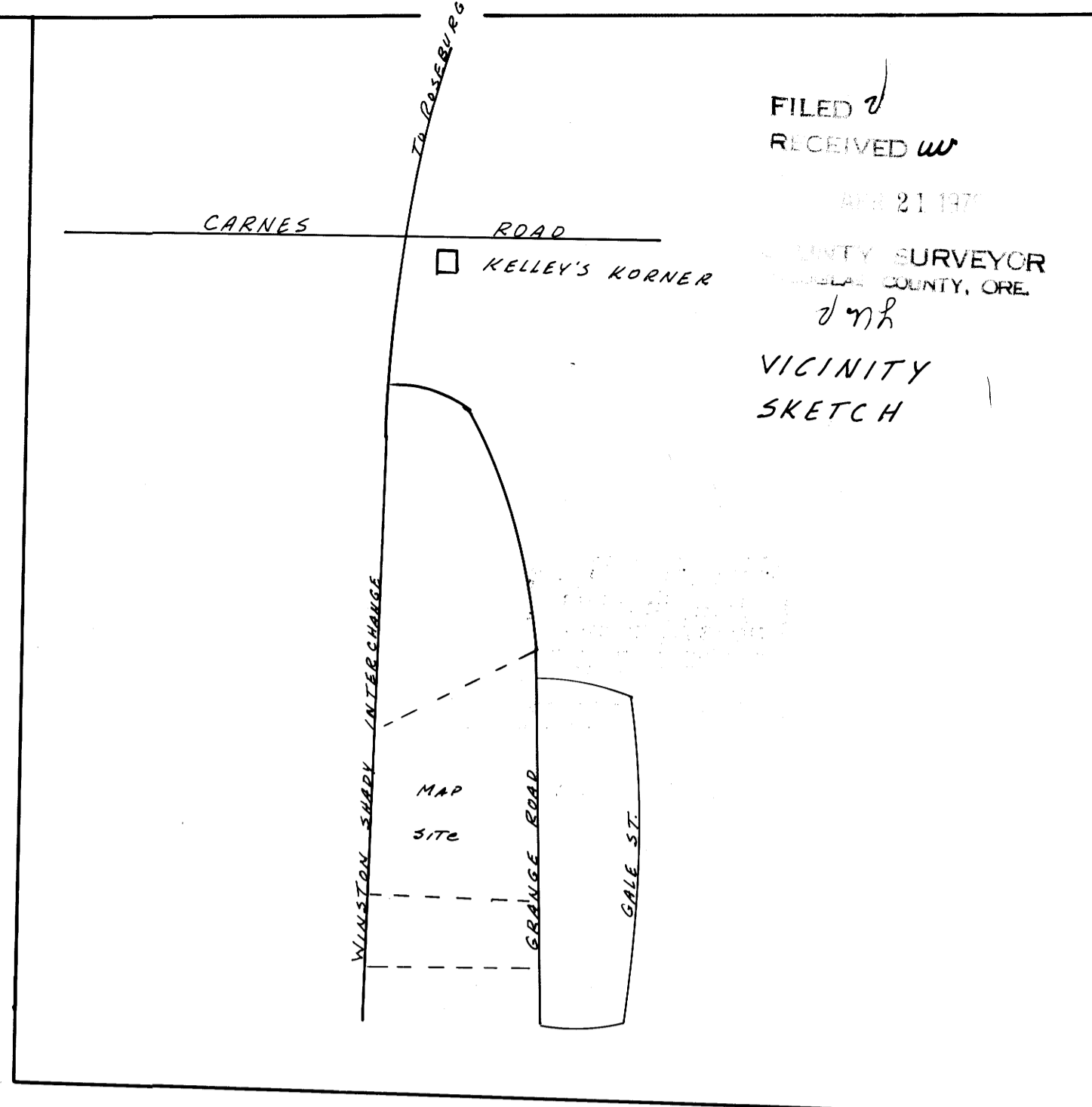
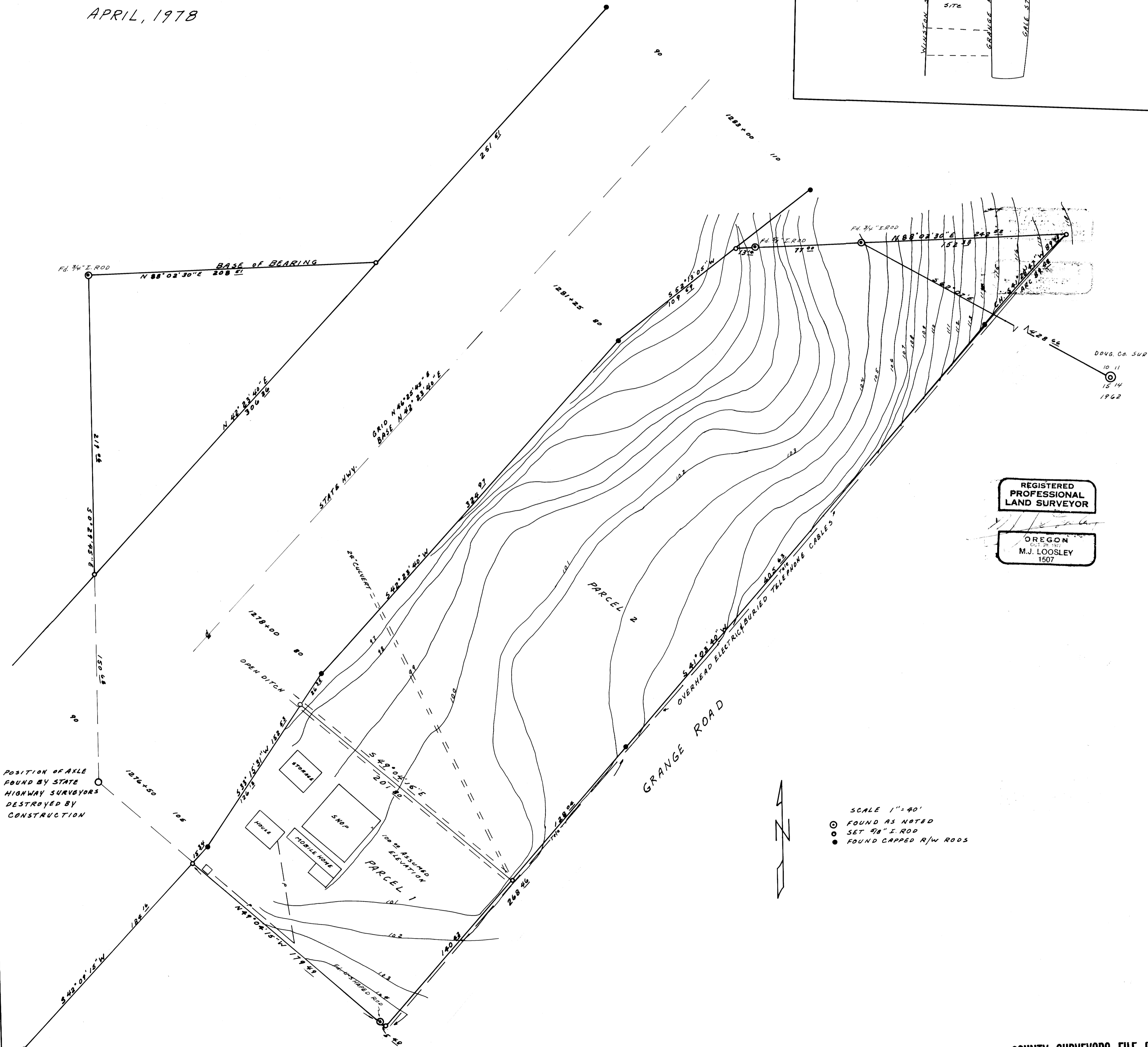


COUNTY SURVEYORS FILE DATA  
DO NOT REMOVE FROM OFFICE

BOUNDARY SURVEY  
SECTIONS 10 & 15, T. 28 S., R. 6 W., W.M.  
FOR: DELORIS KITCHING  
BY: JOHN LOOSLEY, PROFESSIONAL ENG.  
APRIL, 1978

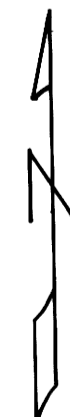


FILED  
RECEIVED  
APR 21 1978  
COUNTY SURVEYOR  
DELAWARE COUNTY, ORE.  
JML  
VICINITY  
SKETCH



REGISTERED  
PROFESSIONAL  
LAND SURVEYOR  
OREGON  
M.J. LOOSLEY  
1507

SCALE 1" = 40'  
○ FOUND AS NOTED  
● SET 48" I. ROD  
● FOUND CAPPED R/W RODS



POSITION OF AXLE  
FOUND BY STATE  
HIGHWAY SURVEYORS  
DESTROYED BY  
CONSTRUCTION

COUNTY SURVEYORS FILE DATA  
DO NOT REMOVE FROM OFFICE