

# SURVEY FOR U.S. FOREST SERVICE

Sec. 15, T. 27 S., R. 2 W., W. M. Douglas County, Oregon.

COUNTY SURVEYORS FILE DATA  
DO NOT REMOVE FROM OFFICE

FILED  
RECEIVED

AUG 16 1978

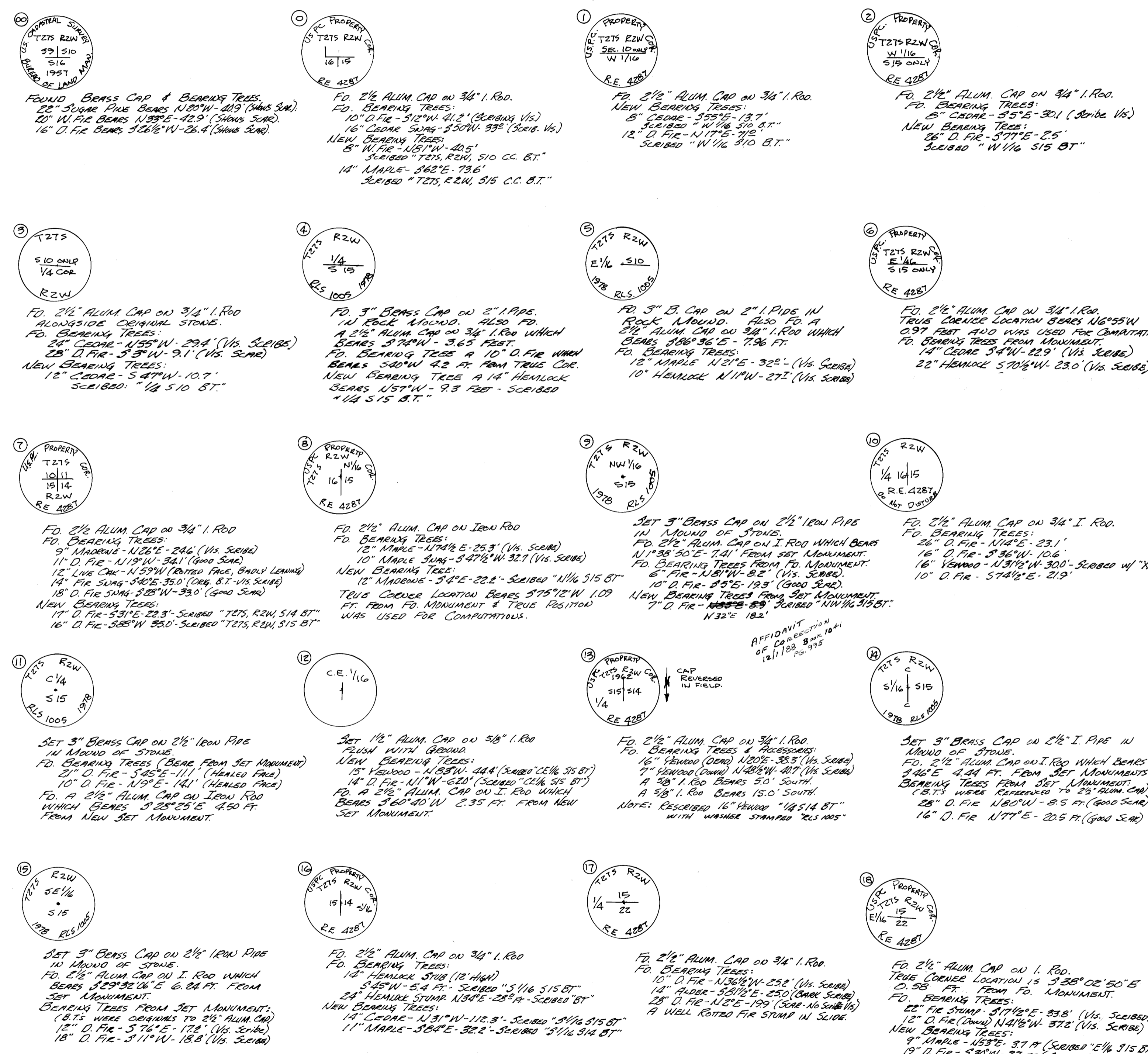
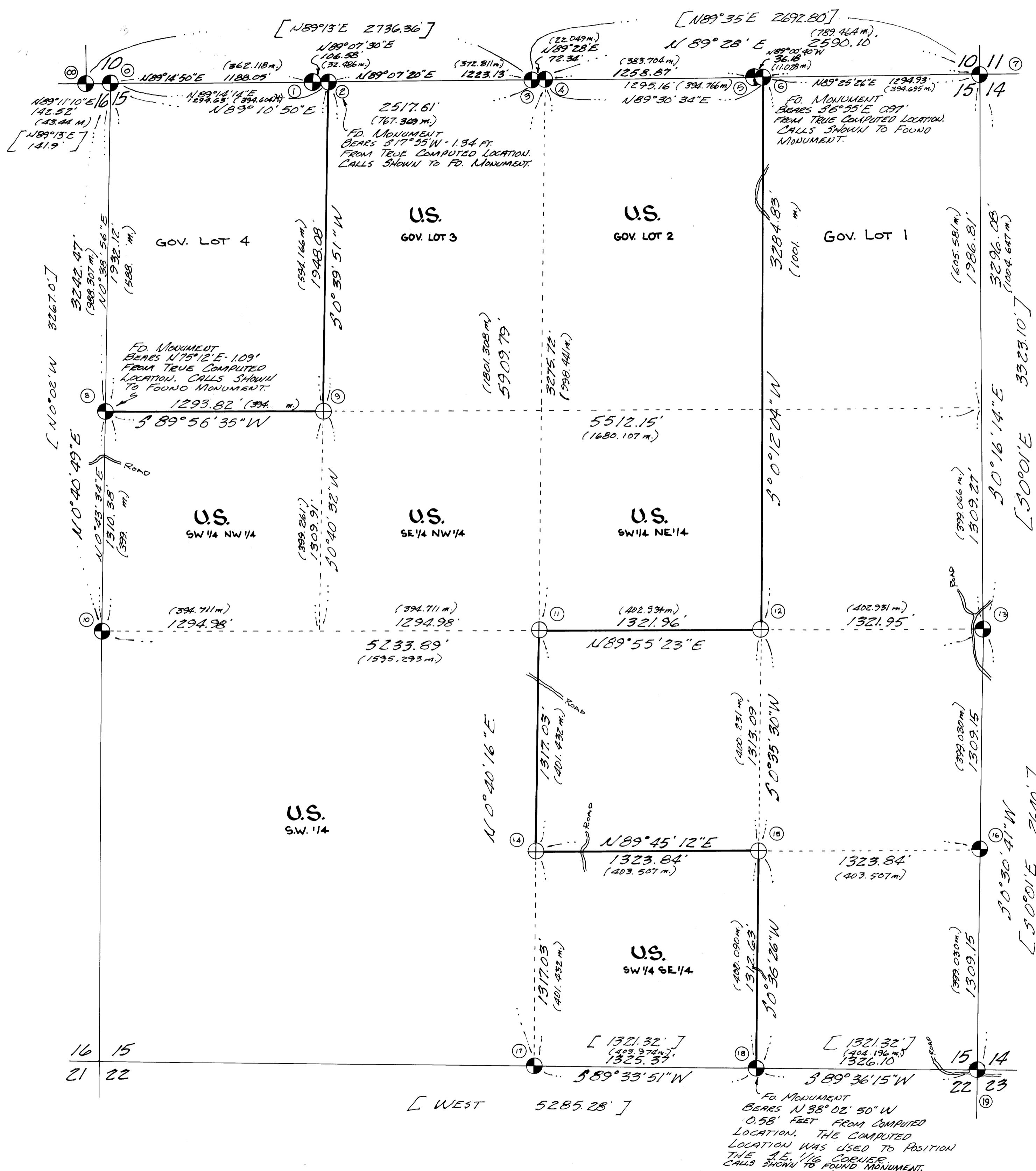
COUNTY SURVEYOR  
DOUGLAS COUNTY, ORE.

## LEGEND

- ⊙ - DENOTES F.D. MONUMENT.
- ⊕ - DENOTES SET MONUMENT.
- [ ] - RECORD PER G.L.O. PLAT
- LINE POSTED WITH STEEL FENCE POSTS AND GOVT. PROPERTY SIGNS.

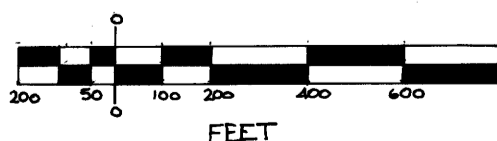
## NOTES:

1. ALL NEW BEARING TREES SCRIBED IN THIS SURVEY ARE MARKED WITH BRASS WASHERS STAMPED "R.C. 1005" NAILED TO THE LOWER BLAZE OF EACH TREE.
2. F.D. MONUMENTS SHOWN ARE FOR SURVEY FILED "M 29-28" IN DOUGLAS COUNTY SURVEYORS OFFICE. SEE FOR RECORD MEASUREMENTS.
3. LINES POSTED ARE TO TRUE CORNER POSITIONS, WHEN DIFFERENT FROM FOUND MONUMENT LOCATIONS.



**B.H.W. ENGINEERING & SURVEYING INC.**  
1205 SE. COURT ROSEBURG, OREGON. 673-0165

July 1978



Scale 1" = 400'

REGISTERED PROFESSIONAL LAND SURVEYOR

Romanso E. Ware

OREGON ROMANSO E. WARE 1005

"I, Romanso E. Ware, a registered professional land surveyor in the State of Oregon, hereby certify that this plat and the notes hereon, or attached, are a correct representation of a survey performed during March 1978 to July 1978, for the U.S. Forest Service, in accordance with the statutes of the State of Oregon and with the articles of my contract."

Romanso E. Ware  
Registered Professional Land Surveyor  
Oregon License No. 1005

FIELD BOOK - SECTION 15 CONTRACT NO. 006810N GLOBE SURVEY No. 6