

FILED
RECEIVED

JUN 22 1978

COUNTY SURVEYOR
DOUGLAS COUNTY, ORE.

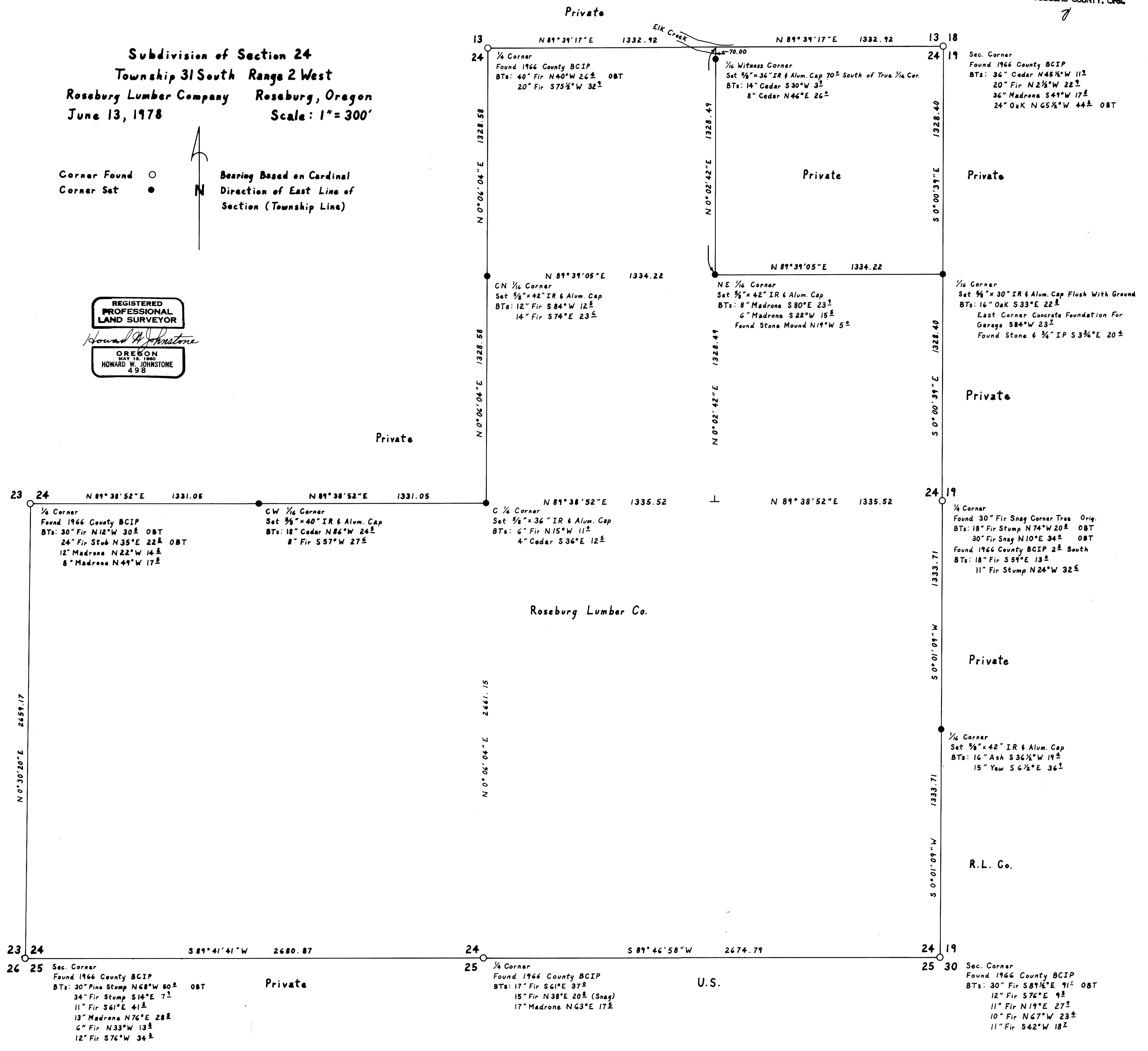
Subdivision of Section 24
Township 31 South Range 2 West
Roseburg Lumber Company Roseburg, Oregon
June 13, 1978 Scale: 1" = 300'

Corner Found ○
Corner Set ●
Bearing Based on Cardinal
Direction of East Line of
Section (Township Line)

REGISTERED
PROFESSIONAL
LAND SURVEYOR

Howard W. Johnstone

OREGON
MAY 13, 1960
HOWARD W. JOHNSTONE
498



U.S.