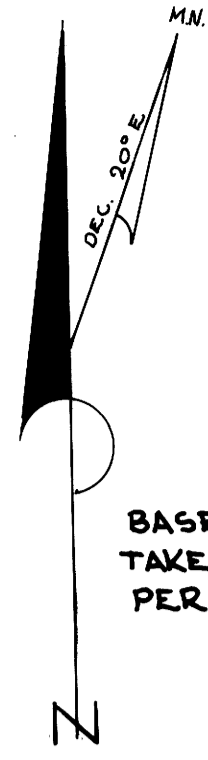


FILED
RECEIVED
MAY 25 1978
COUNTY SURVEYOR
DOUGLAS COUNTY, OREGON



BASED ON SOLAR
TAKEN JAN 24, 1977
PER M 65-13

LEGEND

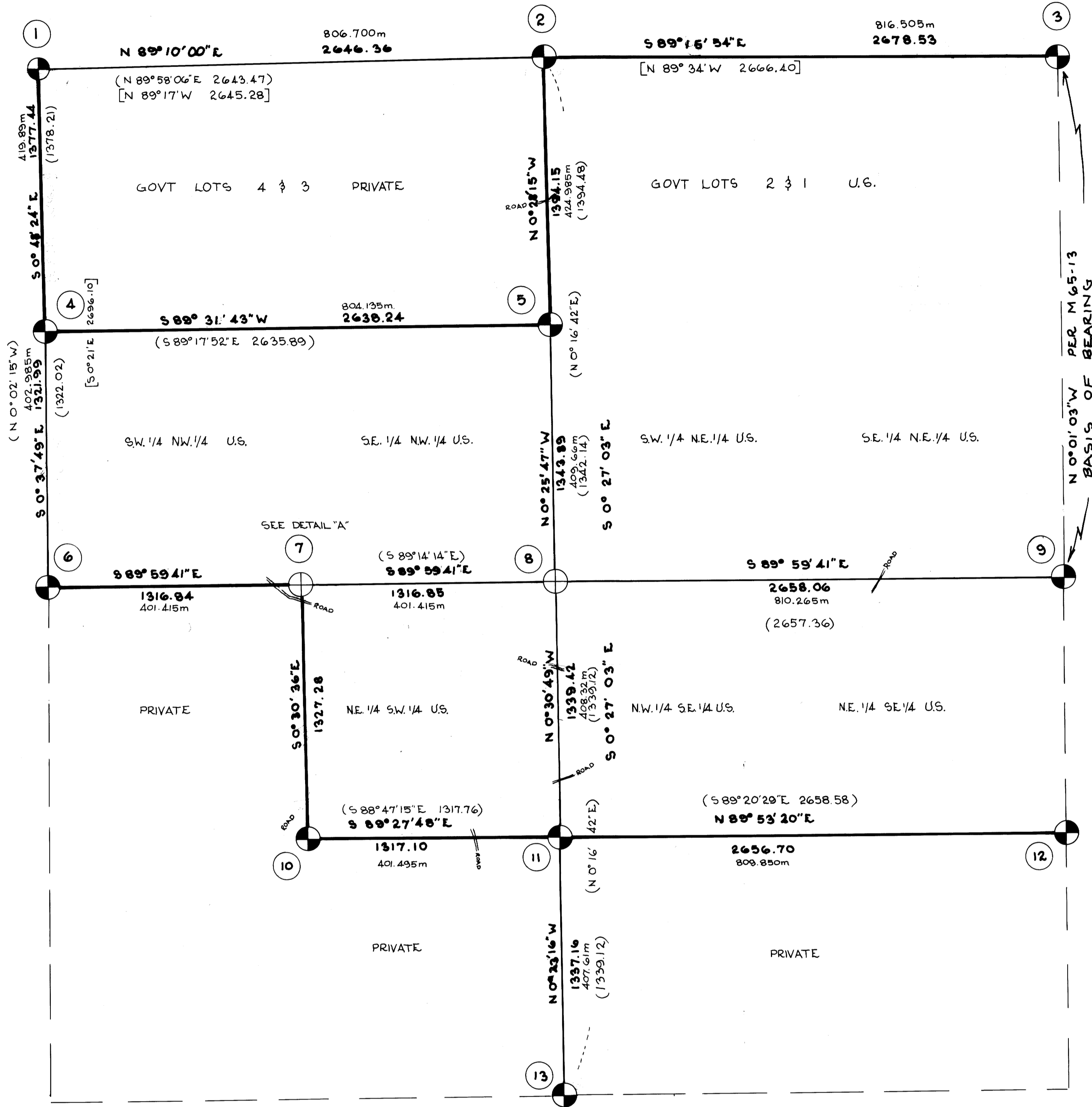
- ⊕ SET CORNER MONUMENT
- ⊙ FOUND CORNER MONUMENT
- TRUE LINE POSTED WITH STEEL FENCE POSTS AND GOVERNMENT PROPERTY SIGNS
- () RECORD COURSE PER M 37-18, A SURVEY FILED IN DOUGLAS COUNTY SURVEYOR'S OFFICE MAP FILES.
- [] RECORD COURSE PER G.L.O. RETRACEMENT OF 1907 BY CHARLES E. ROBERTS

"I, Romanso E. Ware, a registered professional land surveyor in the State of Oregon, hereby certify that this plat and the notes hereon, or attached, are a correct representation of a survey I performed during March, 1978 to May, 1978, for the U.S. Forest Service, in accordance with the statutes of the State of Oregon and with the Articles of my contract."

Romanso E. Ware
Romanso E. Ware
Registered Professional Land Surveyor
Oregon License No. 1005

REGISTERED
PROFESSIONAL
LAND SURVEYOR

Romanso E. Ware
OREGON
NOV. 18, 1978
ROMANSO E. WARE
1005



1
G.L.O.
S3 S2
S10 S11
T27S R2W

FOUND: G.L.O. BRASS CAP
10" D. Fir N60°E 57.4 ft.
12" Cedar S28°30'E 19.8 ft.
13" Hemlock N57°30'W 21.8 ft. (recorded as Fir)
24" Cedar N98°W 48.5 ft.
5" Pine snag S27°W 18.5 ft.
13" Hemlock S22°W 29.7 ft.

2
COUNTY SURVEYOR'S OFFICE
T27S
S2 S1
S11 S12
R2W
1962

FOUND: 1" IRON PIPE WITH BRASS CAP
42" Fir N10°E 8.6 ft.
7" Hemlock N62°W 22.0 ft.
10" Hemlock S15°E 18.5 ft.

3
COUNTY SURVEYOR'S OFFICE
T27S
S2 S1
S11 S12
R2W
1962

FOUND: 1" IRON PIPE WITH BRASS CAP IN STONE MOUND
22" D. Fir N6°W 11.3 ft. Good scar
8" Yew N55°E 27.1 ft. "T27S R2W S1 CS BT" visible
30" D. Fir S70°E 30.4 ft. Good scar
18" W. Fir S15°E 31.1 ft. Scribing visible
30" Fir S35°W 35.6 ft. Good scar
14" Cedar S2°W 13.8 ft. Good scar

4
COUNTY SURVEYOR'S OFFICE
T27S
S2 S1
S11 S12
R2W
1962

FOUND: 3/4" IRON ROD WITH MISORIENTED 2 1/2" ALUMINUM CAP IN MOUND OF STONES
12" MAPLE N12°15'W 21.4 ft.
32" D. Fir S34°15'E 12.2 ft. Good scar (recorded 21.2 ft.)
Per M 37-18

5
COUNTY SURVEYOR'S OFFICE
T27S
S2 S1
S11 S12
R2W
1962

FOUND: 2" ALUMINUM CAP (MISORIENTED) ON 3/4" IRON ROD IN MOUND OF STONES
24" Hemlock S5°W 15.3 ft. NC 1/16 S11 BT visible
6" Cedar N46°W 10.9 ft. "NC 1/16 S11 BT" visible
Per M 37-18

6
LOCAL PROPERTY CORP.
T27S
S2 S1
S11 S12
R2W
RE 4287

FOUND: 3/4" IRON ROD WITH 2 1/2" ALUMINUM CAP
32" D. Fir snag N13°30'W 12.1 ft. good scar
8" Hemlock N31°30'W 27.3 ft. scribing visible
10" W. Fir S50°E 38.6 ft. scribing visible
24" Fir stump S62°E 7.8 ft. scribing visible
Per M 37-18

7
COUNTY SURVEYOR'S OFFICE
T27S
S2 S1
S11 S12
R2W
1962

SET: 2 1/2" GALVANIZED IRON PIPE (WITH 3" BRASS CAP) IN MOUND OF STONES
SCRIBED
34" D. Fir N23°E 7.7 ft. "CW 1/16 S11 BT"
16" D. Fir S86°E 29.4 ft. (old BT per nailed brass washer marked M37-18) RLS 1005 TO LOWER BLAZE OF EACH BT.
FOUND: MONUMENT AND ACCESSORIES AS SHOWN IN DETAIL "A" AND PER M 37-18

8
COUNTY SURVEYOR'S OFFICE
T27S
S2 S1
S11 S12
R2W
1962

SET: 2 1/2" GALVANIZED IRON PIPE (WITH 3" BRASS CAP) IN MOUND OF STONES
SCRIBED
22" D. Fir S87°W 22.2 ft. "C 1/4 S11 BT"
22" D. Fir S51°E 48.8 ft. "C 1/4 S11 BT"
nailed brass washer marked RLS 1005 TO LOWER BLAZE OF EACH BT.

9
LOCAL PROPERTY CORP.
T27S
S2 S1
S11 S12
R2W
RE 4287

FOUND: 3/4" IRON ROD WITH ALUMINUM CAP
12" Fir N18°W 3.9 ft. (scribing visible)
10" Hemlock S30°W 26.3 ft. (scribing visible)
Per M 37-18

10
US FOREST SERVICE
T27S
S2 S1
S11 S12
R2W
SW 1/16
RE 4287

FOUND: 1" OUTSIDE DIAMETER IRON PIPE WITH ALUMINUM CAP
7" Cedar N58°E 76.0 feet, scribing visible
16" Fir N28°30'E 61.3 ft., face healed
Per M 37-18

11
US FOREST SERVICE
T27S
S2 S1
S11 S12
R2W
RE 4287

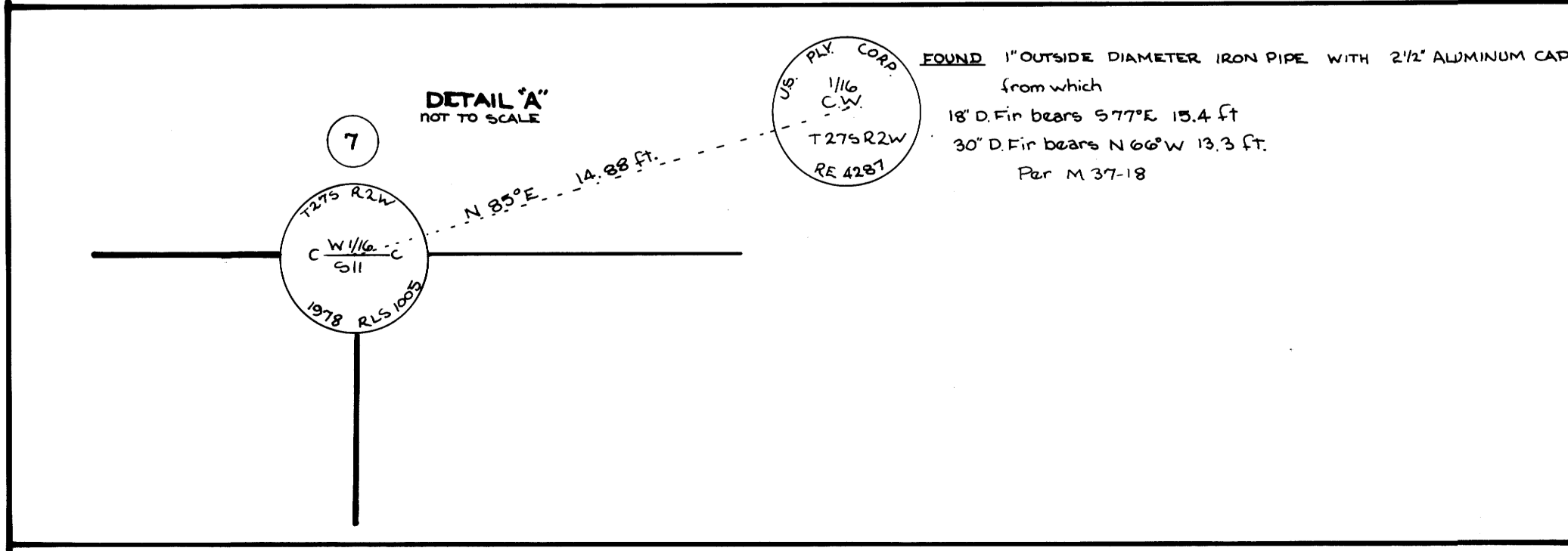
FOUND: 1" OUTSIDE DIAMETER IRON PIPE WITH ALUMINUM CAP
SCRIBED
10" Cedar S80°W 169.0 ft. "SC 1/16 S11 BT"
6" Cedar S47°E 233 ft. "SC 1/16 S11 BT"
nailed brass washer marked RLS 1005 TO LOWER BLAZE OF EACH BT.

12
PROP. CORP.
T27S
S2 S1
S11 S12
R2W
RE 4287

FOUND: 2" ALUMINUM CAP ON 3/4" IRON ROD beside a 3/4" iron rod
15" W. Fir N40°E 46.6 ft., scribing visible
8" D. Fir N76°W 62.9 ft., face healed
Per M 37-18

13
COUNTY SURVEYOR'S OFFICE
T27S
S2 S1
S11 S12
R2W
1968

FOUND: BRASS CAP
36" Hemlock stump N84°E 37.1 ft. "1/4 S11 CS BT" visible
12" Cedar stump 8 ft. tall S44°E 51.0 ft. "1/4 S11 CS BT" visible
36" D. Fir stump S75°W 43.3 ft. scribed "1/4 S11 CS BT" visible
Yew windfall N9°E 54.2 ft. "1/4 S11 BT" visible



NOTE: STEEL FENCE POSTS SET WITHIN 5 FEET OF EACH CORNER SET, TIED OR POSTED TO.

COUNTY SURVEYORS FILE DATA
DO NOT REMOVE FROM OFFICE