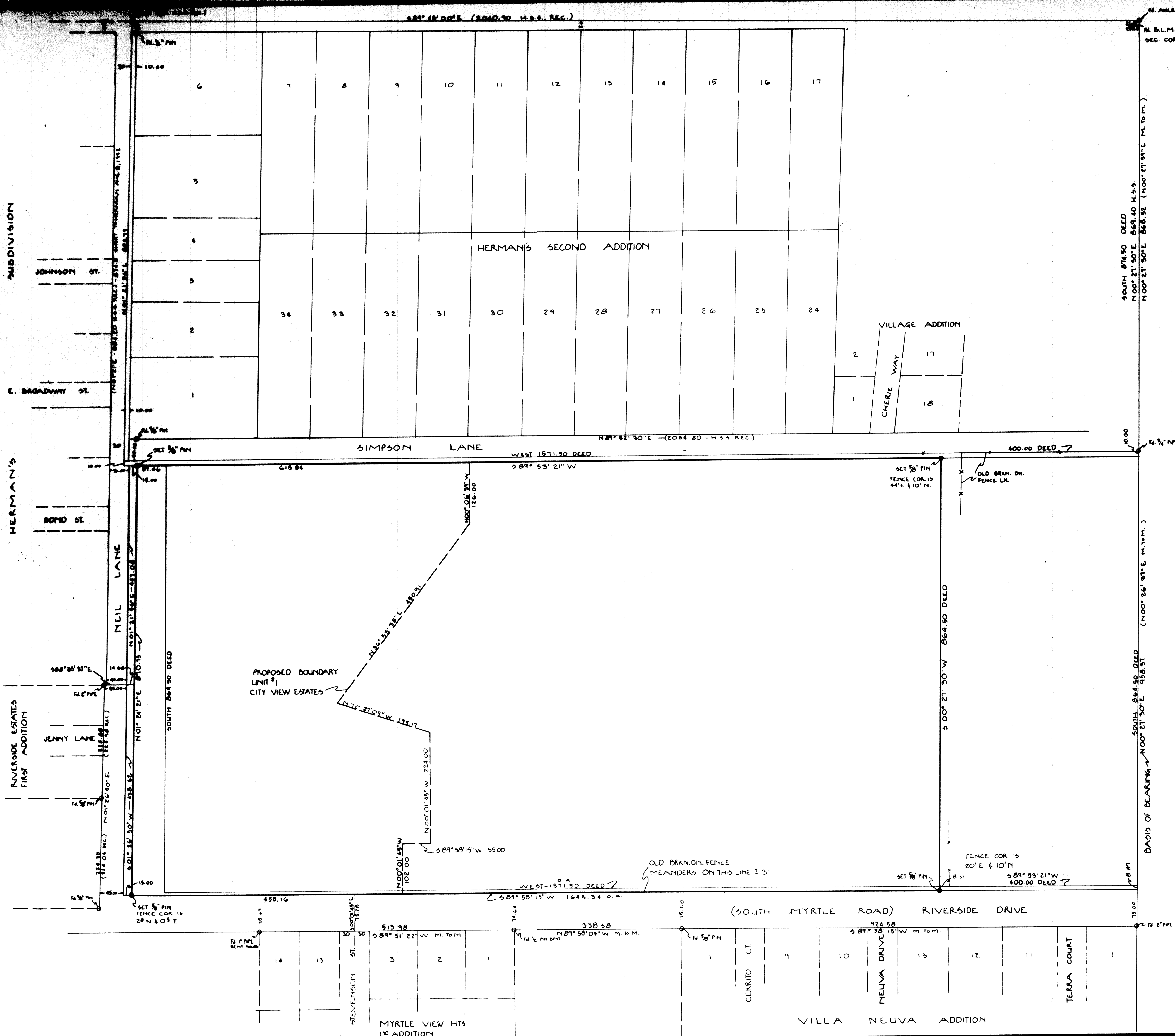


FILE DATA
REMOVE FROM OFFICE

FILED
RECEIVED
MAY 17 1978
COUNTY SURVEYOR
DOUGLAS COUNTY, ORE.



LEGEND
 ○ - F.I. PIPE OR PIN AS NOTED
 ● - SET 3/8\"/>

FOR: C&K BUILDERS
 RT. 1, BOX 6A
 MYRTLE CREEK, OR. 97457

MAP OF SURVEY
 IN
 A PORTION OF DONATION
 LAND CLAIM #45
 SITUATED IN T29S, R5W, SEC. 27
 DOUGLAS COUNTY, ORE.
 4/78

COUNTY SURVEYORS FILE DATA
 DO NOT REMOVE FROM OFFICE

REV. BY	REVISION	DATE	REV. NO.

CONSULTING ENGINEERING
HAMMOND ENGINEERING
 5900 WASHBURN WAY
 KLAMATH FALLS, OREGON 97601
 503-883-2201

PROPOSED BOUNDARY OF
 CITY VIEW ESTATES
 RECORD OF SURVEY

DESIGNED BY:	DATE:	JOB NO.
DRAWN BY: R	DATE: 4/78	SCALE: 1" = 100'
APPROVED BY: DBH	DATE:	SHEET NO.