

PROPERTY SURVEY FOR FRANK EVANS

NW 1/4, SEC. 9, T.27 S., R.7 W., W.M.

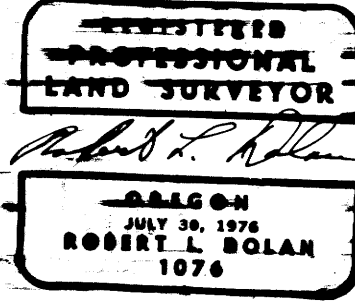
DOUGLAS COUNTY, OR.

BY ROBERT L. DOLAN

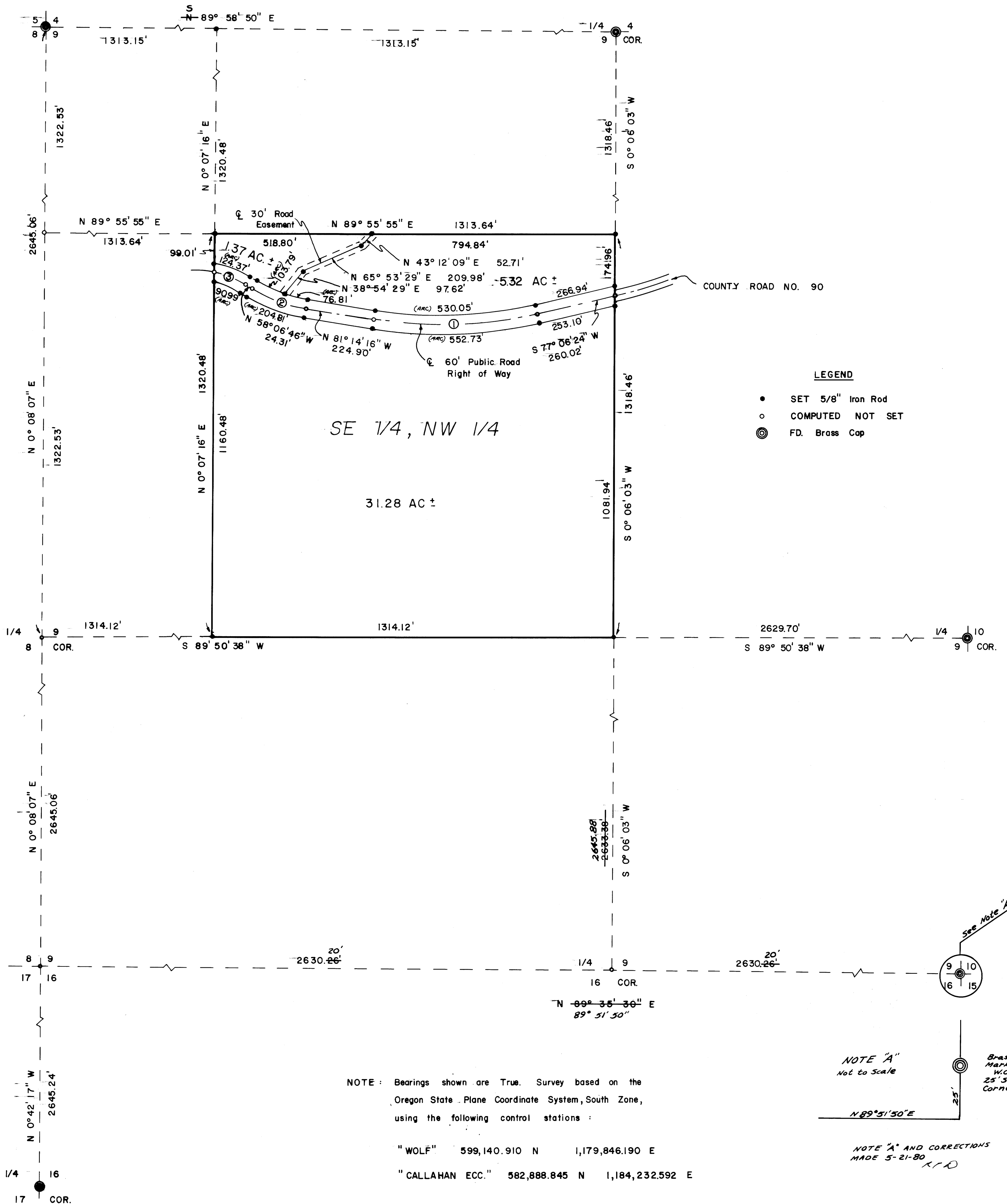
APRIL 1978

FILED
RECEIVED
MAY 15
COUNTY SURVEYOR
DOUGLAS COUNTY, OR.

MAP FILE M 72-12



SCALE 1" = 200'



PUBLIC ROAD CURVE DATA

CURVE NO.	Δ	R	T	L	LC
CURVE NO. 1	21° 39' 20"	1432.39'	273.96'	541.39'	S 87° 56' 04" W 538.17'
CURVE NO. 2	23° 07' 30"	477.46'	97.68'	192.71'	N 69° 40' 31" W 191.40'
CURVE NO. 3	21° 32' 18"	286.48'	54.49'	107.69'	N 68° 52' 55" W 107.06'

LEGEND

- SET 5/8" Iron Rod
- COMPUTED NOT SET
- ⊙ FD. Brass Cap

NOTE: Bearings shown are True. Survey based on the Oregon State Plane Coordinate System, South Zone, using the following control stations:

"WOLF" 599,140.910 N 1,179,846.190 E
"CALLAHAN ECC." 582,888.845 N 1,184,232.592 E

NOTE "A"
Not to Scale

NOTE "A" AND CORRECTIONS
MADE 5-21-80
K.F.D.

Brass Cap Marked W.C. 25' South to Corner

MAP FILE M 72-12