

# SURVEY FOR U.S. FOREST SERVICE

IN SECTION 14, T30S, R1W, DOUGLAS COUNTY, OREGON

BY: UMPQUA SURVEYING COMPANY, MYRTLE CREEK, OREGON

JANUARY 1978

SCALE: 1"=500'

WILLIAM J. RUPPERT, a registered professional land surveyor in the State of Oregon hereby certify that this plat and the notes hereon, or attached, are a correct representation of a survey I performed during January 1978 thru March 1978, for the U.S. Forest Service, in accordance with statutes of the State of Oregon and with the Articles of the contract.

WILLIAM J. RUPPERT  
REGISTERED OREGON LAND SURVEYOR

REGISTERED OREGON LAND SURVEYOR

JULY 12, 1968  
WILLIAM J. RUPPERT  
866

### LEGEND

- SET BRASS CAP
- FOUND BRASS CAP
- TRUE LINE POSTED WITH STEEL FENCE POSTS AND GOVERNMENT PROPERTY SIGNS
- ( ) RECORD CALLS - GLO PLAT 1858
- [ ] RECORD CALLS - GLO PLAT 1923
- (( )) RECORD GLO PLAT 1917

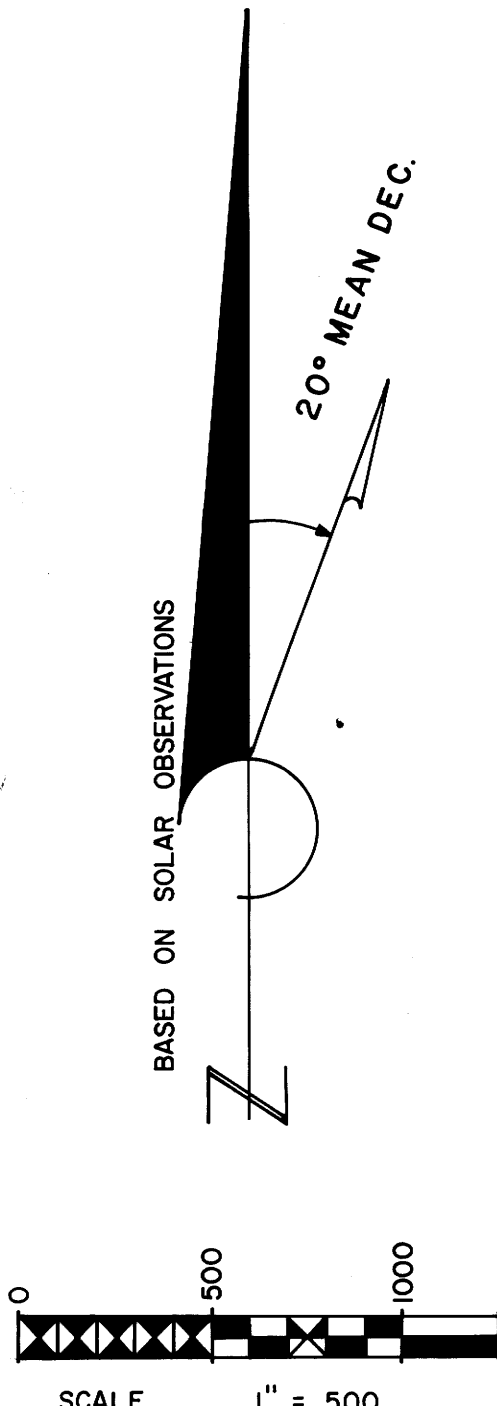
NOTE: ALL MONUMENTS SET ON THIS SURVEY ARE 2"x30" GALV. IRON PIPES WITH 1/2" BRASS CAP

ALL BEARING TREE DIMENSIONS INDICATE THE DIAMETER OF THE TREE AT CHEST HEIGHT.

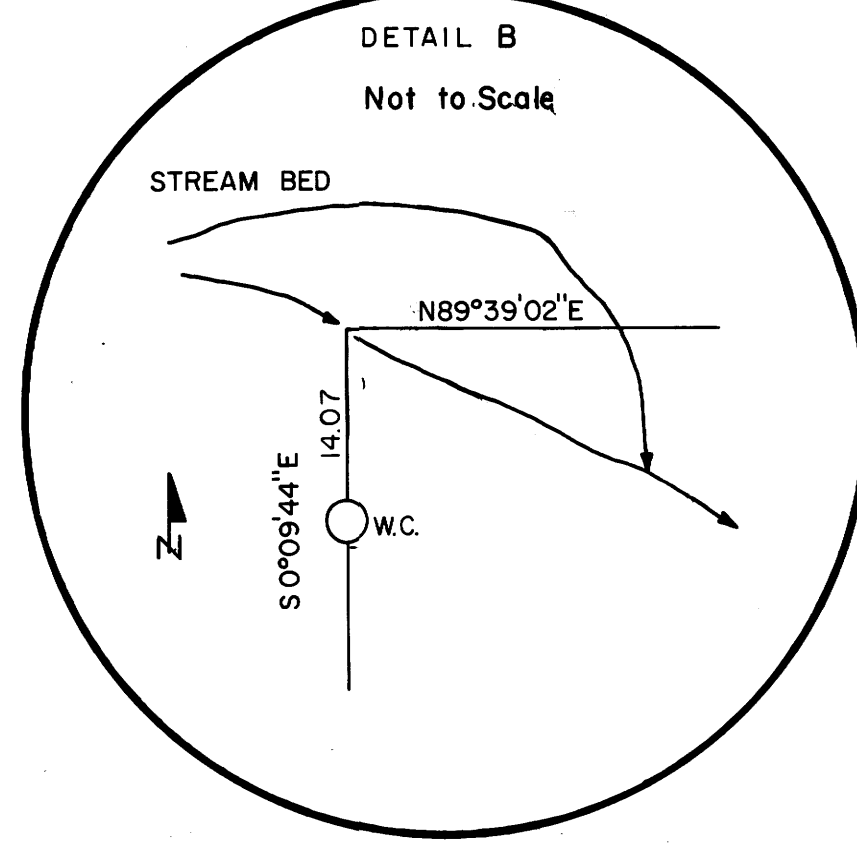
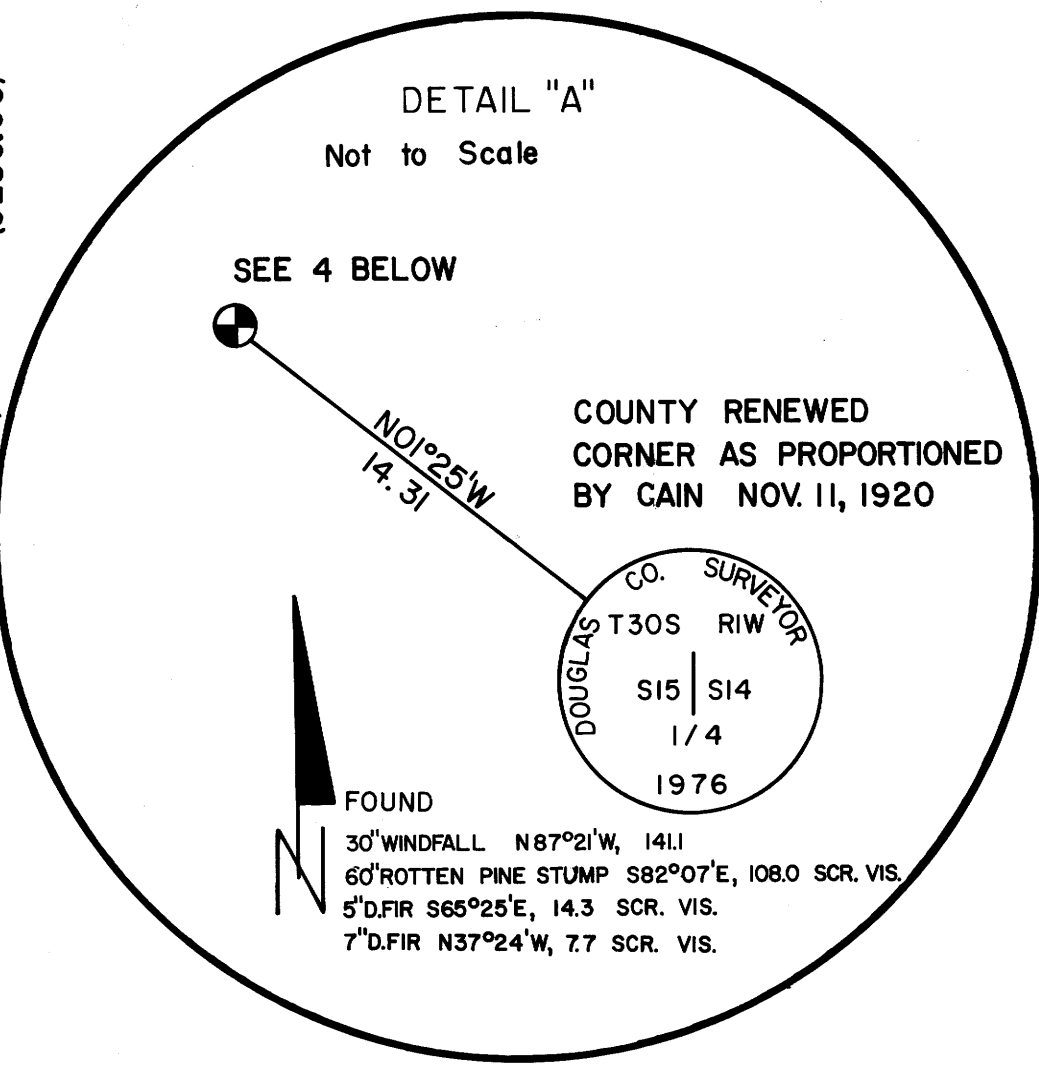
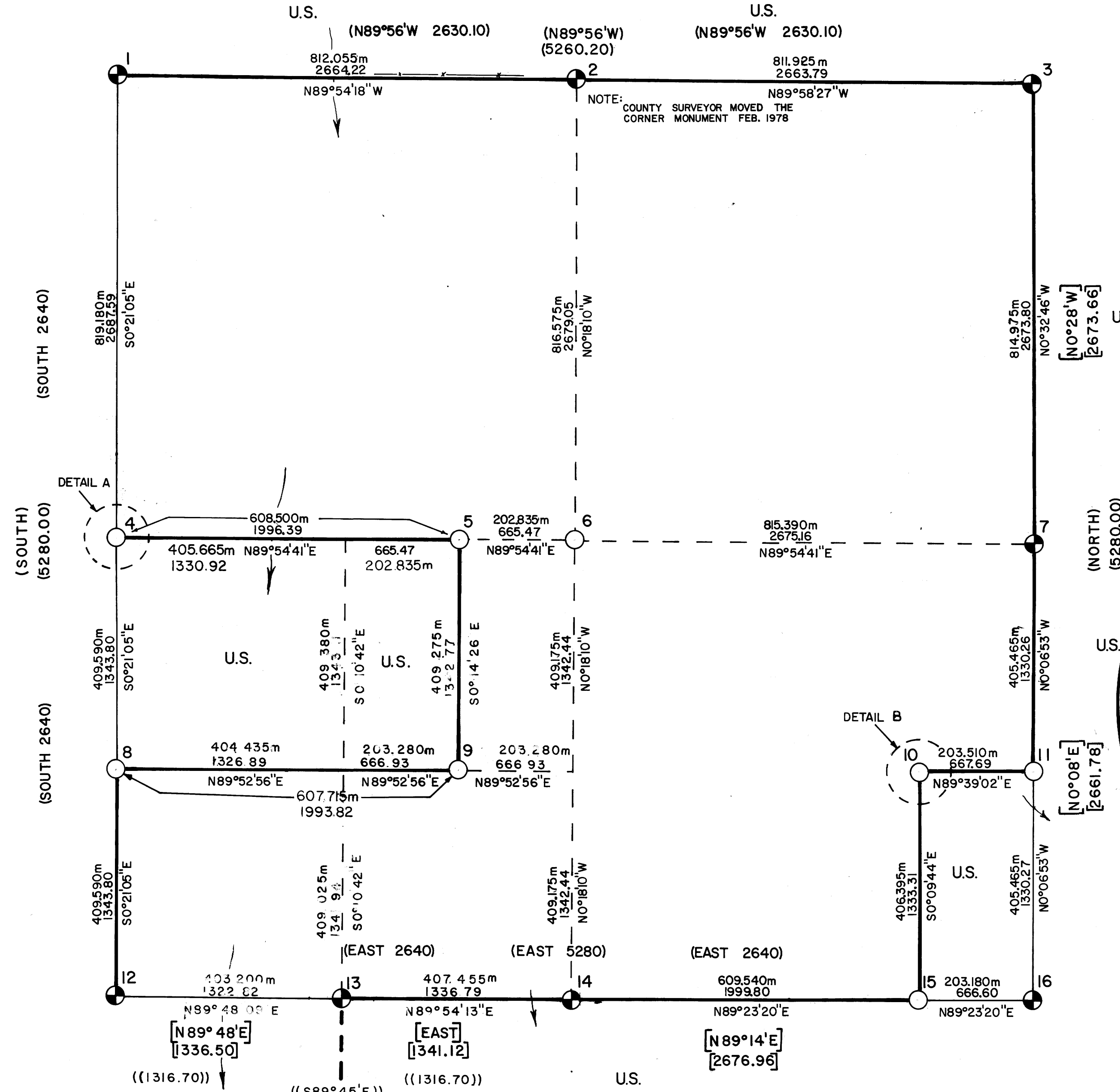
ALL BEARING TREE DISTANCES AND BEARING ARE FROM THE CENTER OF THE MONUMENT TO CENTER OF THE TREE AT ROOT CROWN.

SCRIBED BEARING TREES HAVE A BRASS WASHER STAMPED LS 866 NAILED IN LOWER BLAZE.

DISTANCES TO BEARING TREES ARE IN FEET.



NOTE: DISTANCES SHOWN ARE NOT REDUCED TO SEA LEVEL.



- |  |   |  |
|--|---|--|
| <p>1 FOUND 1" pipe with 2 1/2" brass cap<br/>38" B.OAK N4°44'E, 101.8 GOOD SCAR<br/>23" OAK SNAG S81°20'E, 95.2 SCAR<br/>9" B.OAK S 53°50'E, 15.0 GOOD SCAR<br/>30" D.FIR S56°34'W, 86.4 SCRIBING VIS.<br/>21" B.OAK N84°25'W, 147.5 GOOD SCAR<br/>9" D.FIR N34°13'W, 12.0 GOOD FACE<br/>53" BROKEN SNAG D.FIR S85°54'W, 133.4 VIS. SCR.</p> | <p>6 SCRIBED<br/>12" D.FIR S56°10'E, 44.3 "C1/4 S14 BT"<br/>14" D.FIR S06°10'E, 5.2 "C1/4 S14 BT"</p>   | <p>11 FOUND 1 1/2" pipe with 2 1/2" brass cap<br/>14" D.FIR N44°45'W, 18.1 "S1/16 S14 BT"<br/>8" W.OAK N63°16'E, 34.1 "S1/16 S13 BT"</p>   |
| <p>2 FOUND 1" pipe with a 2 1/2" brass cap<br/>15" D.FIR N43°36'E, 35.5 SCR. VIS.<br/>21" OAK N78°36'E, 20.3 GOOD SCAR<br/>48" PINE STUMP S78°13'E, 23.5 SCR. VIS.<br/>36" OAK S24°54'E, 33.2 SCR. VIS.<br/>5/8" ROD WITH ALUM. CAP (1 1/2") MARKED "RP" IN OLD POSITION OF COUNTY PIPE N47°55'E, 24.2</p>                                   | <p>7 FOUND 3/4" pipe with 2 1/2" brass cap<br/>12" ROTTEN STUMP N44°11'W, 167.0 NO VIS. SCR.<br/>9" D.FIR N46°21'W, 16.2 GOOD SCAR<br/>13" PINE S43°31'E, 9.2 GOOD SCAR<br/>12" B.OAK S05°39'E, 171.9 GOOD SCAR</p> | <p>12 FOUND 1 1/2" pipe with 2 1/2" brass cap<br/>26" PINE SNAG N02°10'E, 80.6 VIS. SCR.<br/>15" OAK SNAG N73°15'W, 89.1 VIS. SCR.<br/>8" D.FIR N74°25'W, 24.1 VIS. SCR.<br/>15" D.FIR S75°05'W, 27.4 VIS. SCR.<br/>10" PINE S72°50'E, 39.9 VIS. SCR.<br/>15" D.FIR N68°20'E, 40.9 VIS. SCR.</p> |
| <p>3 FOUND 1" pipe with 2 1/2" brass cap<br/>21" D.FIR N83°04'W, 21.7 GOOD SCAR<br/>12" D.FIR N33°50'E, 20.4 SCR. VIS.<br/>18" D.FIR S53°56'E, 47.6 SCR. VIS.<br/>6" CEDAR WINDFALL S31°32'E, 24.0 SCR. VIS.<br/>18" PINE S07°38'W, 23.3 SCR. VIS.</p>   | <p>8 SCRIBED<br/>19" D.FIR N09°02'E, 55.1 "S1/16 S14 BT"<br/>11" W.OAK N56°53'W, 67.1 "S1/16 S15 BT"<br/>13" W.OAK S86°27'W, 10.2 "S1/16 S15 BT"</p>  | <p>13 FOUND 1" pipe with 2 1/2" brass cap<br/>27" D.FIR S23°06'E, 21.9 VIS. SCR.<br/>18" D.FIR S12°35'W, 20.6 VIS. SCR.<br/>13" FIR STUMP S12°27'W, 58.0 VIS. SCR.<br/>29" FIR STUMP S38°06'W, 64.5 VIS. SCR.</p>  |
| <p>4 SCRIBED<br/>19" D.FIR N86°36'W, 28.6 "1/4 S15, BT"<br/>10" MADRONE N28°09'E, 17.0 "1/4 S14, BT"</p>   | <p>9 SCRIBED<br/>8" B.OAK N24°16'W, 12.7 "CE SW 1/64 BT"<br/>14" PINE N80°16'W, 53.1 "CE SW 1/64 BT"</p>  | <p>14 FOUND 1" pipe with 2 1/2" brass cap<br/>26" D.FIR S35°E, 35.2 VIS. SCR.<br/>24" PINE N80°21'E, 12.8 VIS. SCR.</p>  |
| <p>5 SCRIBED<br/>7" W.OAK N61°44'W, 35.7 "CEW 1/64 S14"<br/>7" W.OAK S27°13'W, 28.7 "CEW 1/64 S14"</p>   | <p>10 SCRIBED<br/>16" D.FIR S19°45'E, 41.0 "WC CE SE 1/64 S14 BT"<br/>16" D.FIR N89°17'W, 57.3 "WC CE SE 1/64 S14 BT"</p>   | <p>15 SCRIBED<br/>18" D.FIR S73°E, 24.6 "EE 1/64 S23 BT"<br/>26" D.FIR N54°E, 17.1 "E E 1/64 S14 BT"</p>   |
| <p>16 FOUND 1 1/2" pipe with 2 1/2" brass cap<br/>8" W.OAK N14°42'W, 15.3 GOOD SCAR<br/>6" W.OAK N10°31'E, 16.0 GOOD SCAR<br/>16" D.FIR STOB N7°05'W, 32.1<br/>8" W.OAK S08°32'E, 14.4 GOOD SCAR<br/>24" D.FIR S08°54'W, 41.9 GOOD SCAR</p>  |   |  |

COUNTY SURVEYORS FILE DATA  
DO NOT REMOVE FROM OFFICE