

SURVEY FOR PROPERTY LINE

EAST LINE OF THORNTONS ADDITION
IN SECTION 19, T.27S. R.5W.W.M.

FOR: GENE WAGNER

BY: BAUGHMAN TECHNICAL SERVICES INC.

COUNTY SURVEYORS FILE DATA
DO NOT REMOVE FROM OFFICE

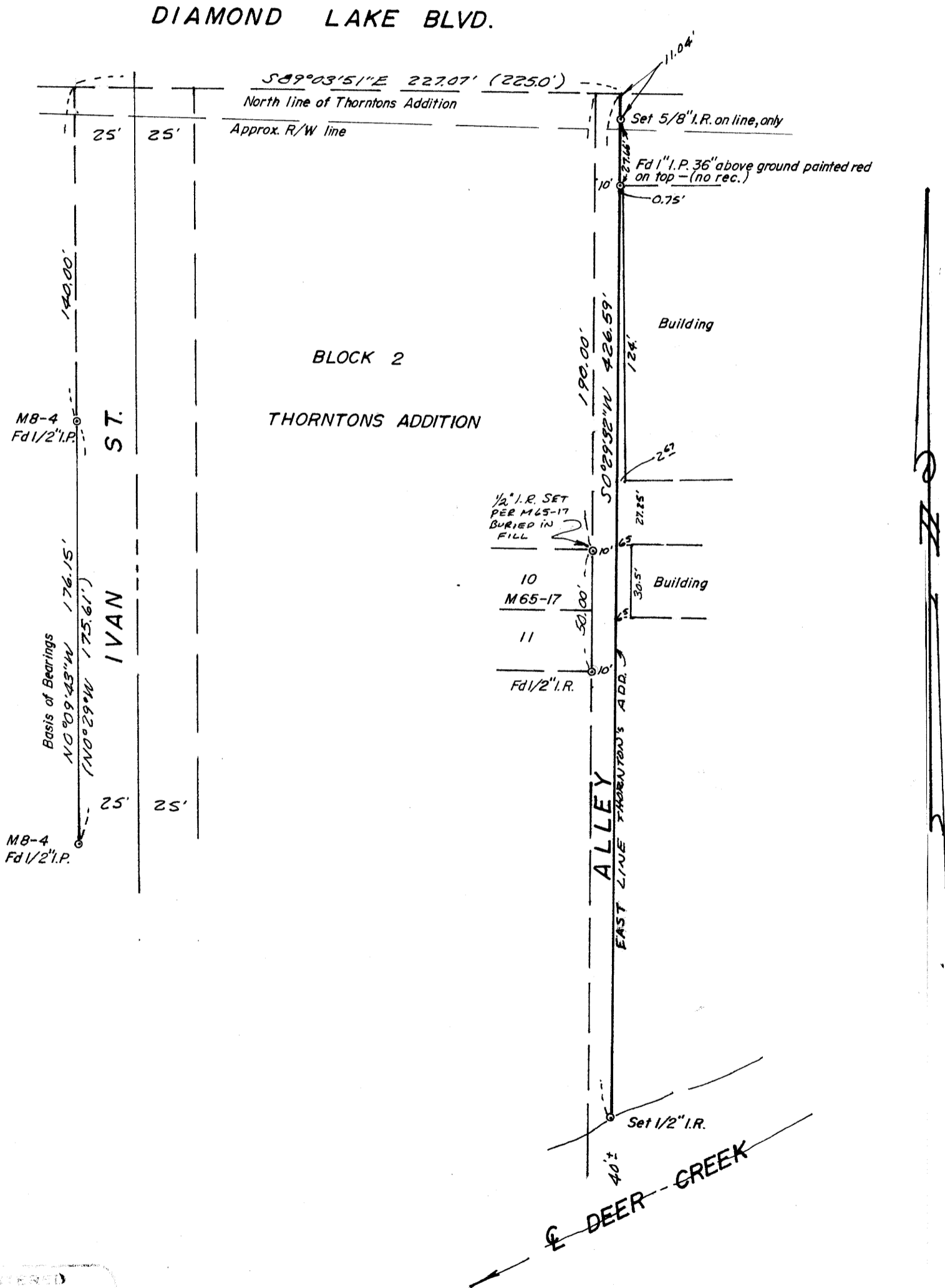
FILED
RECEIVED

APR 25 1978

COUNTY SURVEYOR
DOUGLAS COUNTY, ORE.
778

APRIL 1978

SCALE: 1" = 50'



REGISTERED
PROFESSIONAL
LAND SURVEYOR

Glenn S. Baughman

OREGON
JULY 14 1964
GLENN S. BAUGHMAN
536