

SURVEY FOR DESCRIPTION IN SECTION 13, T.22S. R.6W.W.M. FOR GLENN COLE BY: BAUGHMAN TECHNICAL SERVICES INC.

FILED *dh*
RECEIVED *dh*

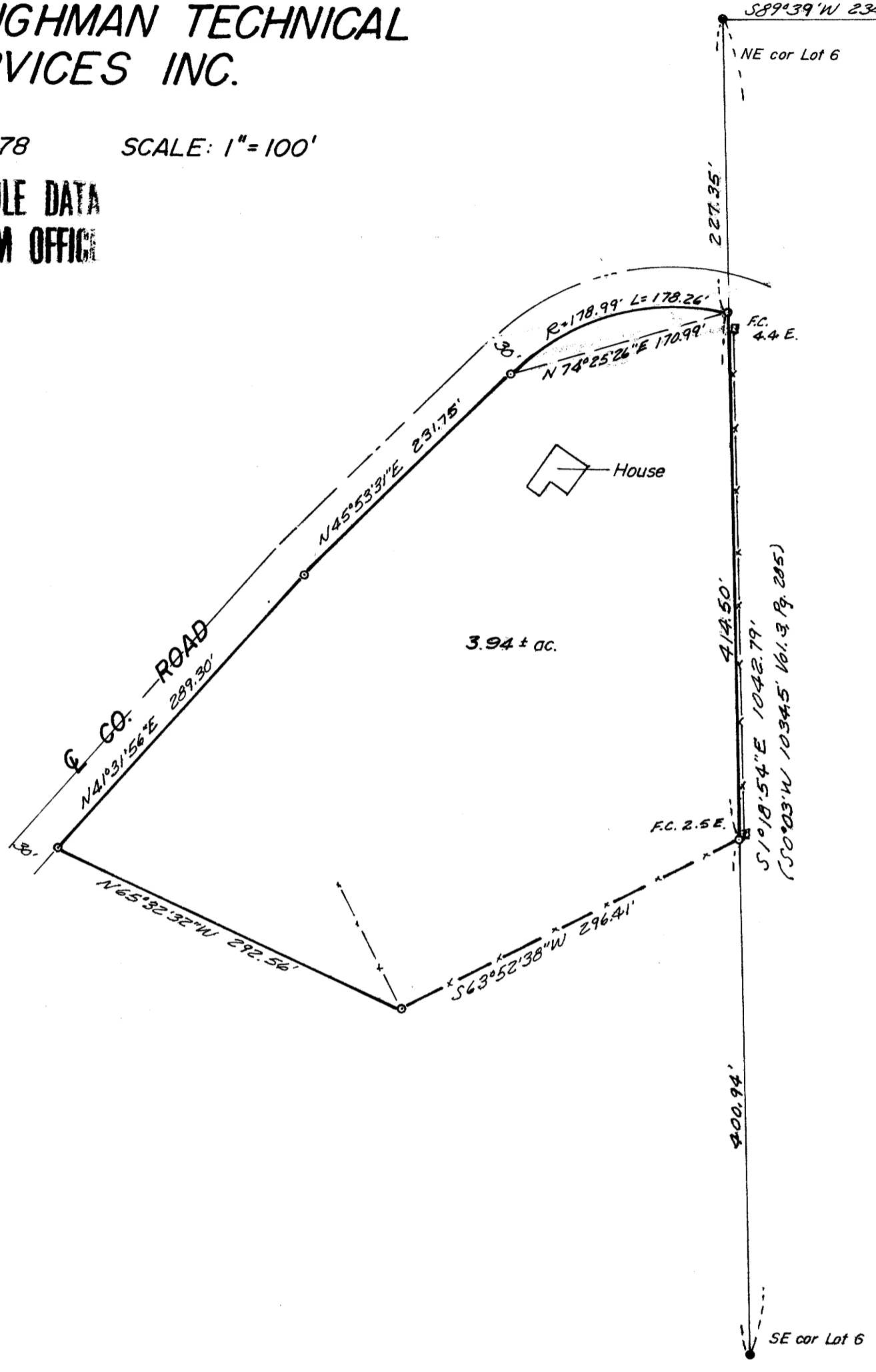
APR 21 1978

COUNTY SURVEYOR
DOUGLAS COUNTY, ORE.
nh

Basis of Bearings M31-29
S89°39'W 234.04' (234.1')

MARCH 1978 SCALE: 1" = 100'

COUNTY SURVEYORS FILE DATA
DO NOT REMOVE FROM OFFICE



Based on M31-29

LEGEND

- — Set 1/2" iron rod
- — Found 3/4" iron pipe
- ⊙ — Found 1" T-iron

FILED
COUNTY SURVEYOR
Glenn S. Baughman
COUNTY SURVEYOR
DOUGLAS COUNTY, ORE.