

COUNTY SURVEYORS FILE DATA  
DO NOT REMOVE FROM OFFICE

# SURVEY FOR MORTGAGE PURPOSES

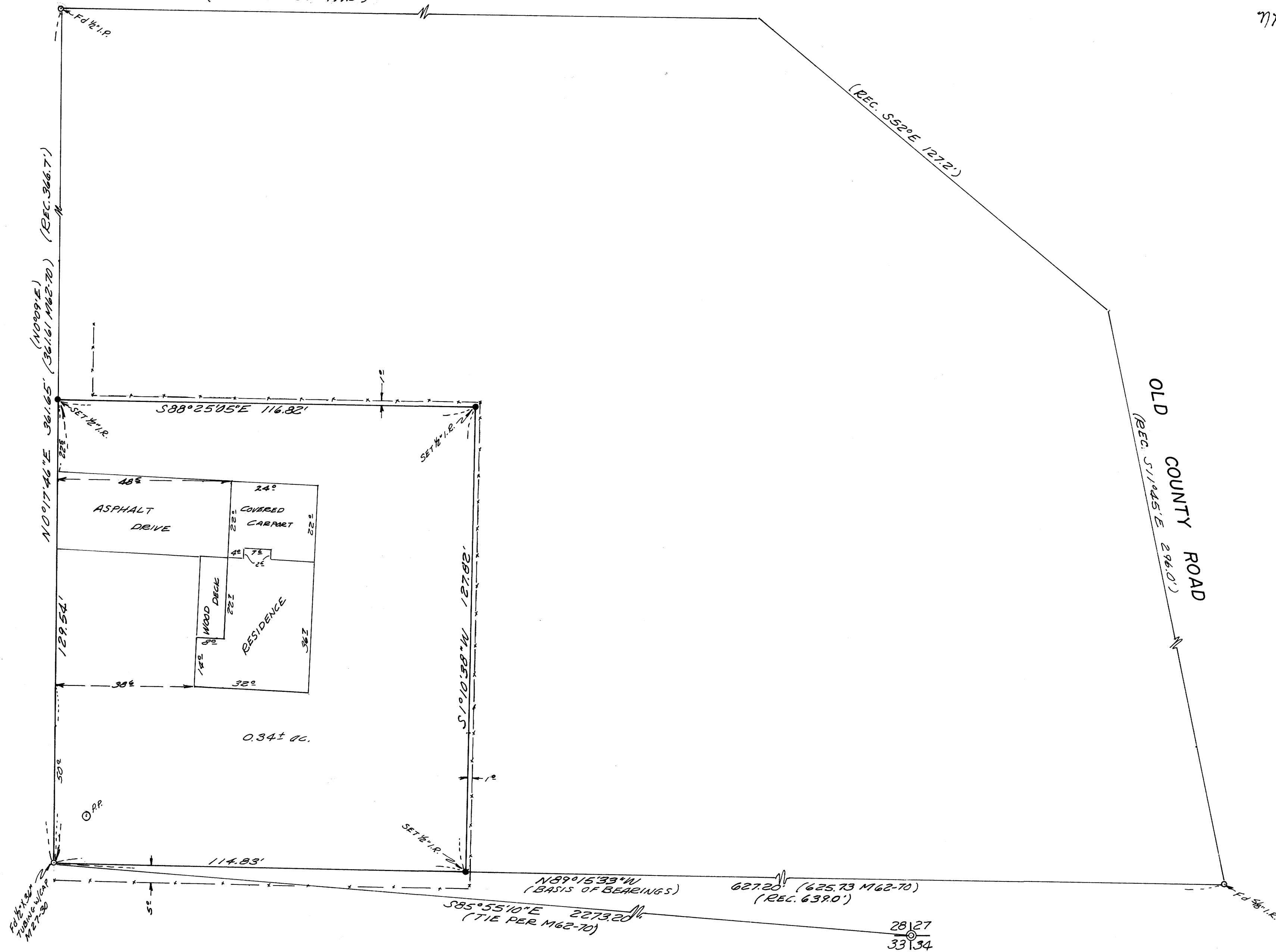
IN SECTION 28, T.26S.R.6W.W.M. - APRIL 1978 - SCALE: 1"=20'

FOR: GERALD TANNER - BY: BAUGHMAN TECHNICAL SERVICES INC.

FILED *v*  
RECEIVED *vh*  
APR 21 1978

COUNTY SURVEYOR  
DOUGLAS COUNTY, ORE.  
*nh*

COUNTY ROAD No. 6  
(REC. N89°50'E 479.0')



REGISTERED  
PROFESSIONAL  
LAND SURVEYOR

*Gerald Baughman*

BAUGHMAN  
TECHNICAL SERVICES  
INC.

MAP FILE M62-55

MAP FILE M62-55