

SURVEY FOR EASEMENT DISCRPTION
 IN SEC. 35, T23S, R5W, W.M.
 FOR - LARRY OWENS
 BY - HAROLD L. BALL, SURVEYOR
 APRIL, 1978

COUNTY SURVEYORS FILE DATA
 DO NOT REMOVE FROM OFFICE

FILED ✓
 RECEIVED ✓

APR 19 1978

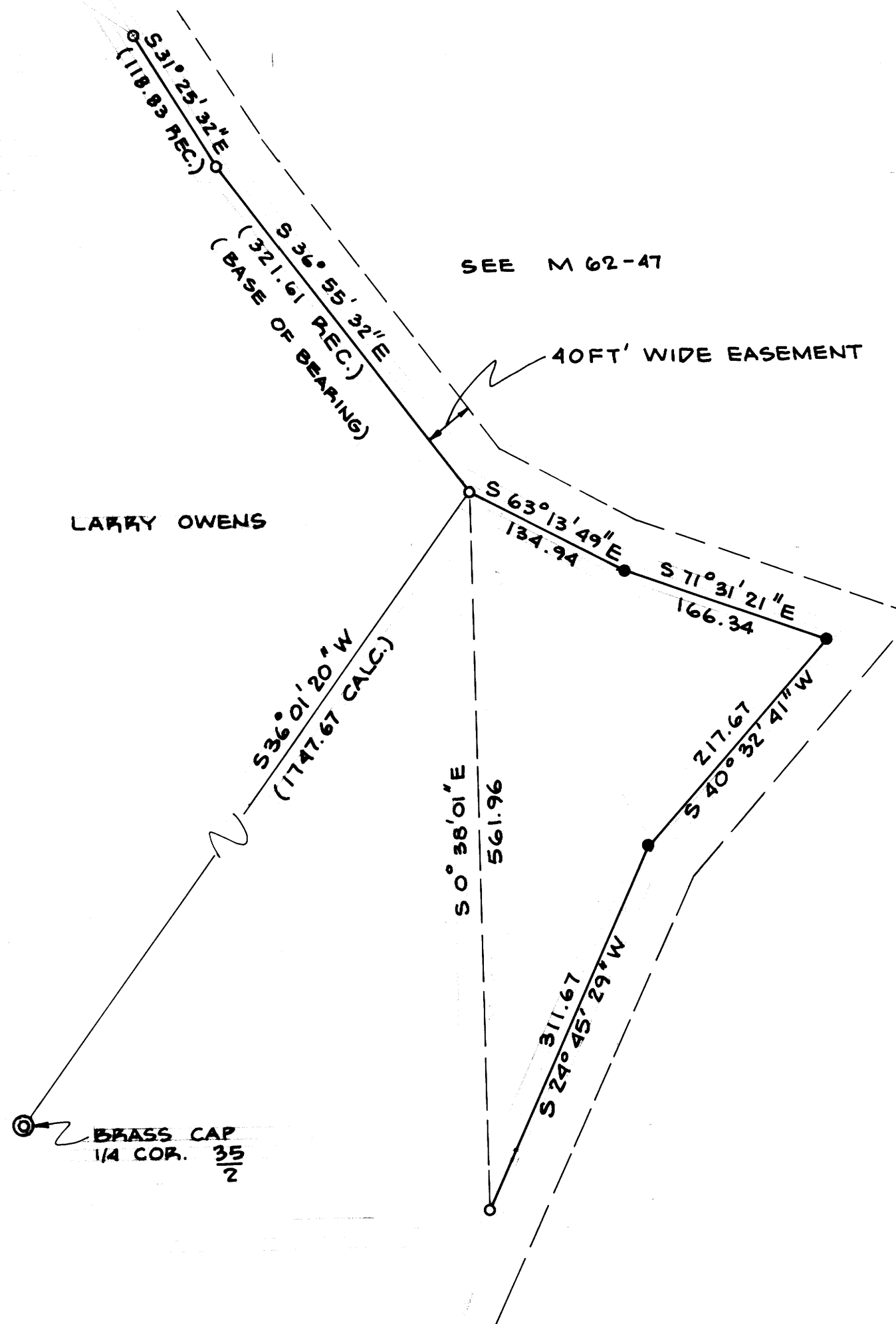
COUNTY SURVEYOR
 DOUGLAS COUNTY, ORE.

HL

SEE M 62-47

40FT' WIDE EASEMENT

LARRY OWENS



REGISTERED
 PROFESSIONAL
 LAND SURVEYOR
Harold L. Ball
 ORE ON
 SEPT. 23, 1977
 HAROLD L. BALL
 1123

- FD. 5/8" I.R.
- SET 5/8" I.R.

MAP FILE M62-52

MAP FILE M62-52