

T. 22 S. R. 8 W., W.M. T. 22 S. R. 7 W., W.M.

25 30
36 31

N 58° 10' 43" W
1,243.02'

N 58° 12' 20" W

FILED *d*
RECEIVED *dR*

APR 13 1978

COUNTY SURVEYOR
DOUGLAS COUNTY, ORE.

d

COUNTY SURVEYORS FILE DATA
DO NOT REMOVE FROM OFFICE

SURVEY FOR DESCRIPTION

SECTION 31, T. 22 S. R. 7 W., W.M.

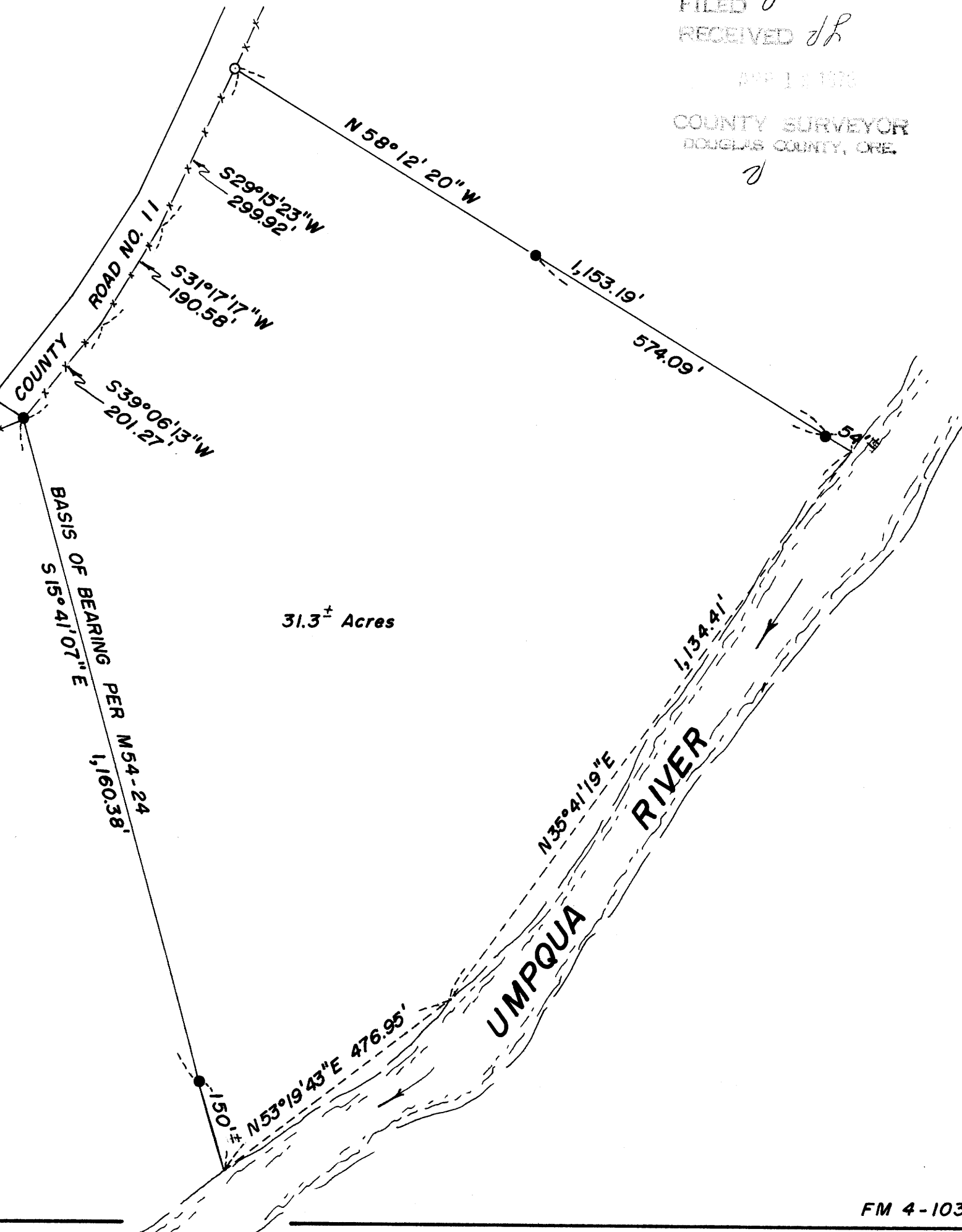
FOR: HENRY BECKLEY

BY: BAUGHMAN TECHNICAL SERVICE

APRIL 1978

SCALE 1" = 200'

- SET 1/2" I. Rod
- FOUND 1/2" I. Rod, as per C.S. 58/71
- ◎ FOUND Brass Cap



31.3± Acres

Alan S. Baughman

MAP FILE M. 69 - 45

MAP FILE M. 69 - 45