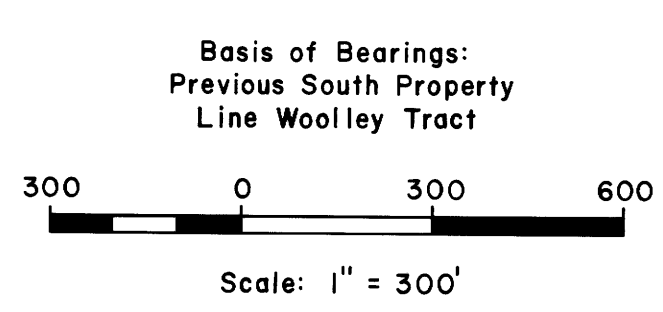


FILED
 RECEIVED
 APR 13 1978
 COUNTY SURVEYOR
 DOUGLAS COUNTY, ORE.
 2



**PROPERTY LINE SURVEY IN THE
 SW 1/4 SEC. 2, T 23 S, R 6 W, W. M.**

For: Woolley Timber Co.

Drain, Oregon

By: Shaner Engineering, Inc.

Roseburg, Oregon

April 13, 1978

REGISTERED
 PROFESSIONAL
 LAND SURVEYOR

BA Shaner

OREGON
 OCT 4 1957
 BRUCE A SHANER
 430

**COUNTY SURVEYORS FILE DATA
 DO NOT REMOVE FROM OFFICE**

LEGEND

- Corner found (5/8" iron rod) ●
- Corner set (5/8" iron rod with aluminum cap) ○
- New property line ———
- Lines run by Eimstad ———

Refer to survey by Eimstad, County Surveyor Map File M 53-35.

MAP FILE M 69 - 44