

COUNTY SURVEYORS FILE DATA
DO NOT REMOVE FROM OFFICE

SURVEY TO ESTABLISH PROPERTY CORNERS IN LOT 14, GLEN D. HART TRACT, WINSTON, ORE.

SEC. 21, T285, R6W. W.M.

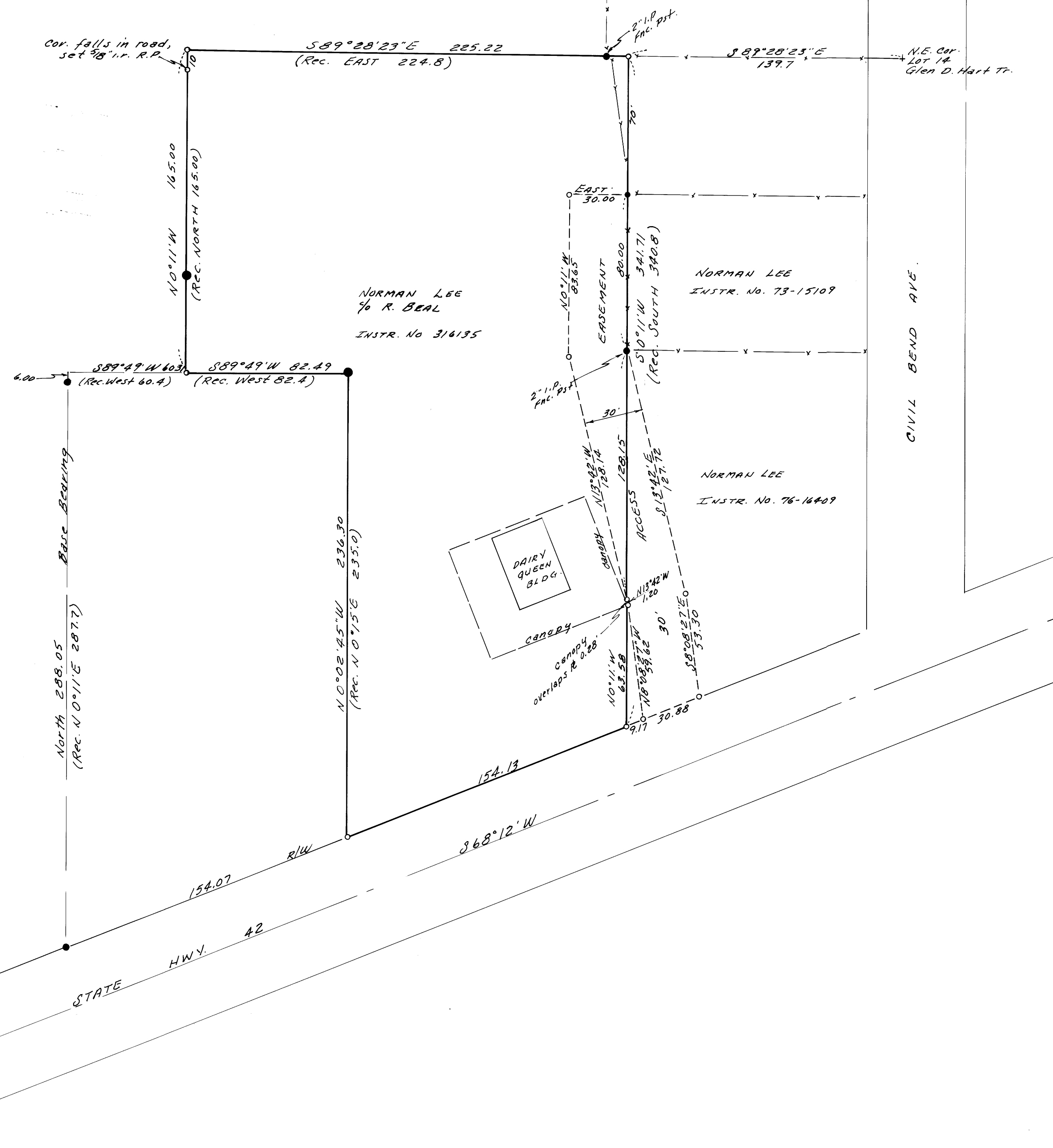
* SURVEYED FOR - WINSTON DAIRY QUEEN
SURVEYED BY

DEC. 1977

W. S. BARNES
ENGINEERING SERVICES
P. O. BOX 38
ROSEBURG, OREGON

2
COUNTY CLERK
CLATSOP COUNTY, ORE.
2

MAP FILE M. 69 - 40



- Denotes 1 1/2" I.P.S Found.
- " 5/8" " " "
- " 5/8" Iron RODS SET.

Refr. -

SCALE 1" = 40'

REGISTERED
PROFESSIONAL
LAND SURVEYOR

W. S. Barnes

1931

MAP FILE M. 69 - 40

M 69 - 40