

SUBDIVISION OF SECTION 17, T. 22 S., R. 9 W., W.M.  
Douglas County, Oregon

Date: March 25, 1978

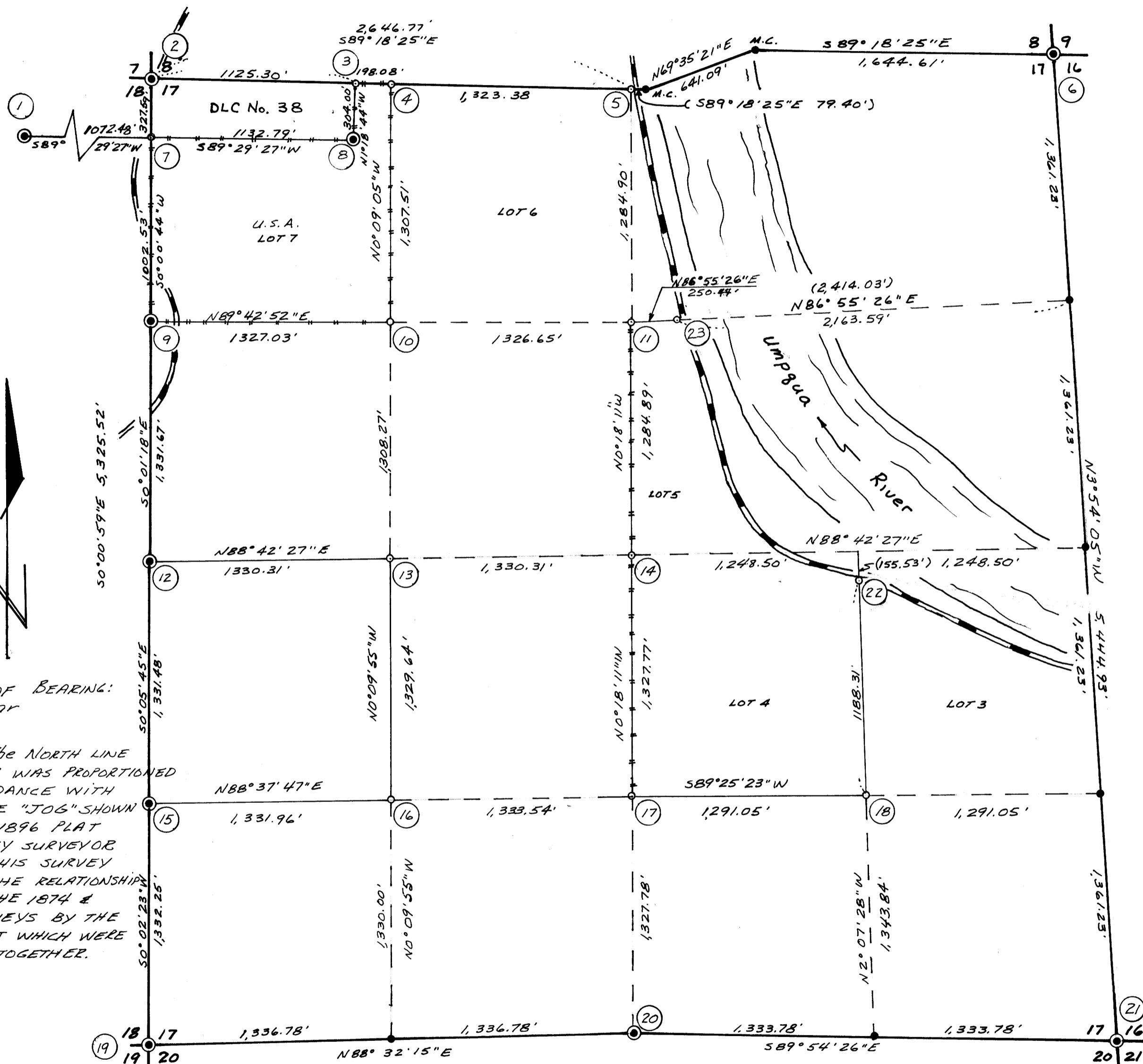
Scale 1" = 500'

FILED  
RECEIVED

APR 1 1978

COUNTY SURVEYOR  
DOUGLAS COUNTY, ORE

MAP FILE 11662-36



- 1 Found B.C.I.P. at N.E. Corner D.L.C. #37, this is a 1970 BLM cap from which:  
22" Myrtle N13°W 41ks.
- 2 Found 1970 B.C.I.P. at corner to sections 7, 8, 17 & 18 from which: 16" D.F. N83½°E 118 1/2'ks.;  
24" D.F. S56°E 102 1/2'ks.; 14" D.F. S48½°W 73 1/2'ks.; 16" D.F. N54½°W 67 1/2'ks.
- 3 Set 5/8" iron rod at the intersection of E. Line D.L.C. #38 and the section line  
between 8/17, from which I scribe: 10" Alder N51°E 9.5'
- 4 Set 5/8" iron rod at West 1/16 corner, from which I scribe: 6" Hem. N75°W 3.0';  
16" Hem. N26°E 10.8'; 6" Hem. S52°E 21.0'
- 5 Set 1 1/2" B.C.I.P. at proportionate distance to conform with G.L.O. Plat of 1896  
by Pershin, which shows the North line of section 17 to jog. I scribe  
the following B.T.s: 10" D.F. S29°W 10.3'; 8" Maple N62°E 47.1'
- 6 Found 1962 County B.C.I.P. for the corner to sections 8, 9, 16 & 17. Bearing  
trees are per County notes & BLM (1970) notes.
- 7 Set 5/8" iron rod at intersection of West line section 17 and South line D.L.C. #38,  
from which I scribe: 14" D.F. N38°W 18.5'; 18" D.F. S3°E 12.0'
- 8 Found 1970 BLM B.C.I.P. at S.E. corner D.L.C. #38, from which: 33" D.F. Snag S27½°E  
25 1/2'ks.; 34" D.F. N87½°W 100 1/2'ks.; 6" Maple N38½°W 25 1/2'ks.; a 1 3/4" pipe reference  
by B.T.s bears N17°46'47"W 75.22'
- 9 Found 1970 BLM B.C.I.P. at N 1/16 corner, from which: 18" D.F. N84°E 136 1/2'ks.;  
12" D.F. N74¼°W 322 1/2'ks.
- 10 Set 5/8" iron rod at NW 1/16 corner, from which I scribe: 20" D.F. East 22.5';  
14" D.F. N75°W 5.8'
- 11 Set 5/8" iron rod for CN 1/16 corner, from which I scribe: 84" D.F. N86°W 35.0' (Bark Scribe);  
6" D.F. S43°E 7.1'
- 12 Found 1970 BLM B.C.I.P. for 1/4 corner, from which: 24" D.F. S72½°E 100 1/2'ks.;  
26" D.F. N27¾°W 38 1/2'ks.
- 13 Set 5/8" iron rod at SW 1/16 corner, from which I scribe: 12" D.F. N67°W 28.5';  
26" Alder S66°E 6.5'
- 14 Set 5/8" iron rod at Center 1/4 corner, from which I scribe: 20" D.F. N49°E 48.5';  
12" Alder S43°E 22.7'
- 15 Found 1970 BLM B.C.I.P. at S 1/16 corner, from which: 16" D.F. N61½°E 29 1/2'ks.;  
12" D.F. S44°W 17 1/2'ks.
- 16 Set 5/8" iron rod for SW 1/16 corner, from which I scribe: 8" D.F. S86°E 7.7';  
10" D.F. N33°W 15.0'
- 17 Set 5/8" iron rod for SE 1/16 corner, from which I scribe: 16" D.F. N84°W 5.0';  
16" D.F. S82°E 13.3'
- 18 Set 5/8" iron rod at SE 1/16 corner, from which I scribe: 10" D.F. N60°E 3.3';  
10" D.F. S68°W 42.9'
- 19 Found 1970 BLM B.C.I.P. for corner to sections 17, 18, 19 & 20, from which:  
18" Maple N57°E 37 1/2'ks.; 16" Alder S33°E 88 1/2'ks.; 14" Alder S58°W 26 1/2'ks.;  
16" D.F. N77½°W 65 1/2'ks.
- 20 Found 1962 County B.C.I.P. at 1/4 corner, from which: 34" Maple N88°E 6.6';  
16" Hem. N56°W 95.4'; 8" Maple N88°E 4.4'; 3" D.F. S12°E 18.4'
- 21 Found 1962 County B.C.I.P. for corner to sections 16, 17, 20 & 21, from which:  
40" D.F. N14°W 30.0'; 20" Hem. S50°E 7.0'; 24" Maple N.E. 33.0'; 64" D.F. Stump  
S45°W 22.4'; 10" Hem. S32°W 42.8'
- 22 Set 5/8" iron rod at Witness point, on S. side Road from which I scribe:  
6" Alder N73°W 15.0'
- 23 Set 5/8" iron rod at witness point, from which I scribe: 6" D.F. S18°E 32.7'

BASIS OF BEARING:  
Solar

NOTE: The NORTH LINE  
OF SEC. 17 WAS PROPORTIONED  
IN ACCORDANCE WITH  
THE LINE "JOG" SHOWN  
ON THE 1896 PLAT  
BY DEPUTY SURVEYOR  
PERSHIN. HIS SURVEY  
SHOWS THE RELATIONSHIP  
BETWEEN THE 1874 &  
1855 SURVEYS BY THE  
GOVERNMENT WHICH WERE  
NOT TIED TOGETHER.

Survey For:  
INTERNATIONAL PAPER Co.  
Box 43  
GARDINER, OREGON

Survey By:  
Stuntzner Engineering & Forestry  
375 Park  
P.O. Box 118  
Cool Bay, Oregon 97420

REGISTERED  
PROFESSIONAL  
LAND SURVEYOR  
Ronald E. Stuntzner  
OREGON  
SEPTEMBER 23, 1977  
RONALD E. STUNTZNER  
1342

LEGEND  
Corners Found (circled dot)  
Corners Set (open circle)  
Corners Not Set (filled circle)  
Lines Blazed (dashed line)  
Gravel Road (thick wavy line)

MAP FILE 11662-36