

COUNTY SURVEYORS FILE DATA
DO NOT REMOVE FROM OFFICE

FILED *v*
RECEIVED *2/8*

MAR 21 1978

COUNTY SURVEYOR
DOUGLAS COUNTY, ORE.

v

SURVEY OF LOTS 24 & 25, BLOCK 10
PLAT - O SUBDIVISION, SUTHERLIN, OR.
SECTION 17, T 25 S, R 5 W, W.M.
FOR LARRY OWENS - MARCH, 1978
BY HAROLD L. BALL - SURVEYOR

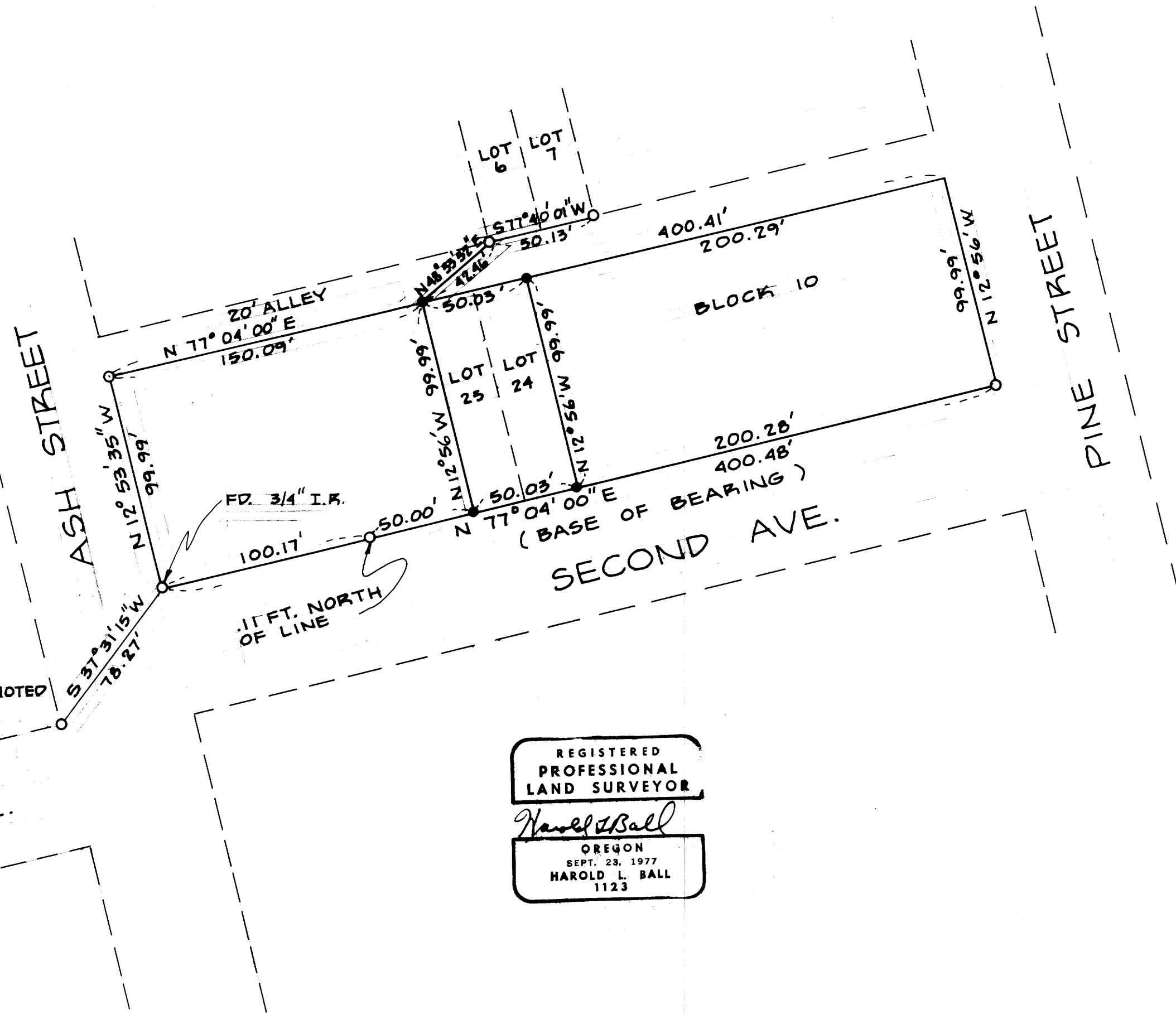
MAP FILE M 69 - 20



1" = 50'

○ F.D. 1/2" I.P. UNLESS OTHERWISE NOTED

● SET 5/8" I.P.



REGISTERED
PROFESSIONAL
LAND SURVEYOR

Harold L. Ball

OREGON
SEPT. 23, 1977
HAROLD L. BALL
1123

MAP FILE M 69 - 20