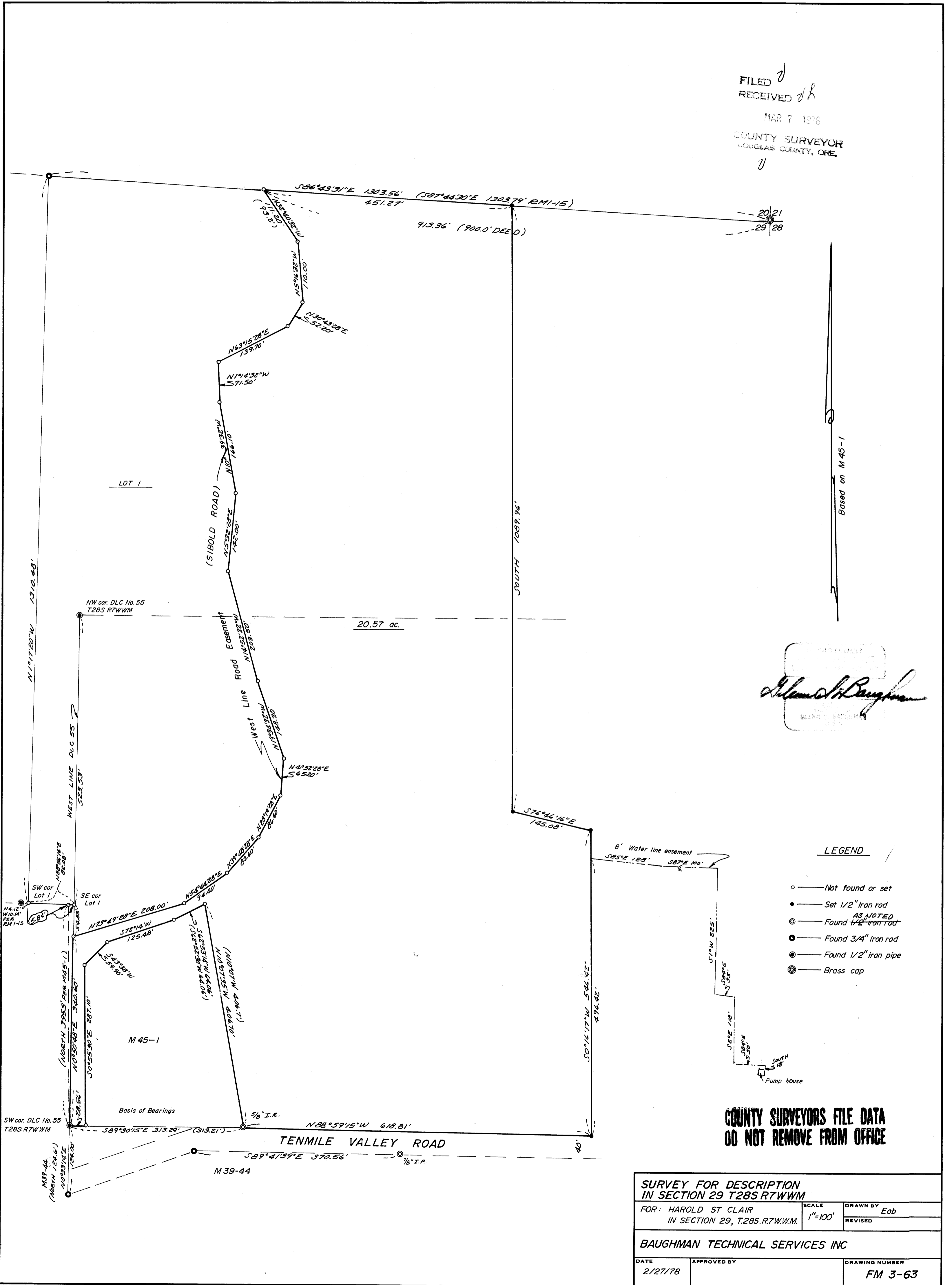


FILED
RECEIVED
MAR 7 1978
COUNTY SURVEYOR
DOUGLAS COUNTY, ORE



- LEGEND**
- — Not found or set
 - — Set 1/2" iron rod
 - ⊙ — Found 1/2" iron rod
 - ⊕ — Found 3/4" iron rod
 - ⊖ — Found 1/2" iron pipe
 - ⊗ — Brass cap

COUNTY SURVEYORS FILE DATA
DO NOT REMOVE FROM OFFICE

SURVEY FOR DESCRIPTION IN SECTION 29 T28S R7WWM		
FOR: HAROLD ST CLAIR IN SECTION 29, T.28S.R.7W.W.M.	SCALE 1"=100'	DRAWN BY Eab
BAUGHMAN TECHNICAL SERVICES INC		
DATE 2/27/78	APPROVED BY	DRAWING NUMBER FM 3-63