

SURVEY IN LOTS 7 & 8, PLAT "B", N. CURRY ESTATE, IN SECTIONS 31 & 32, T26 S, R6 W, W.M.

SURVEY FOR ALVIN O'CONNOR
SURVEY BY BHW ENG. & SURVEYING
MARCH, 1978
SCALE: 1" = 100'

COUNTY SURVEYORS FILE DATA
DO NOT REMOVE FROM OFFICE

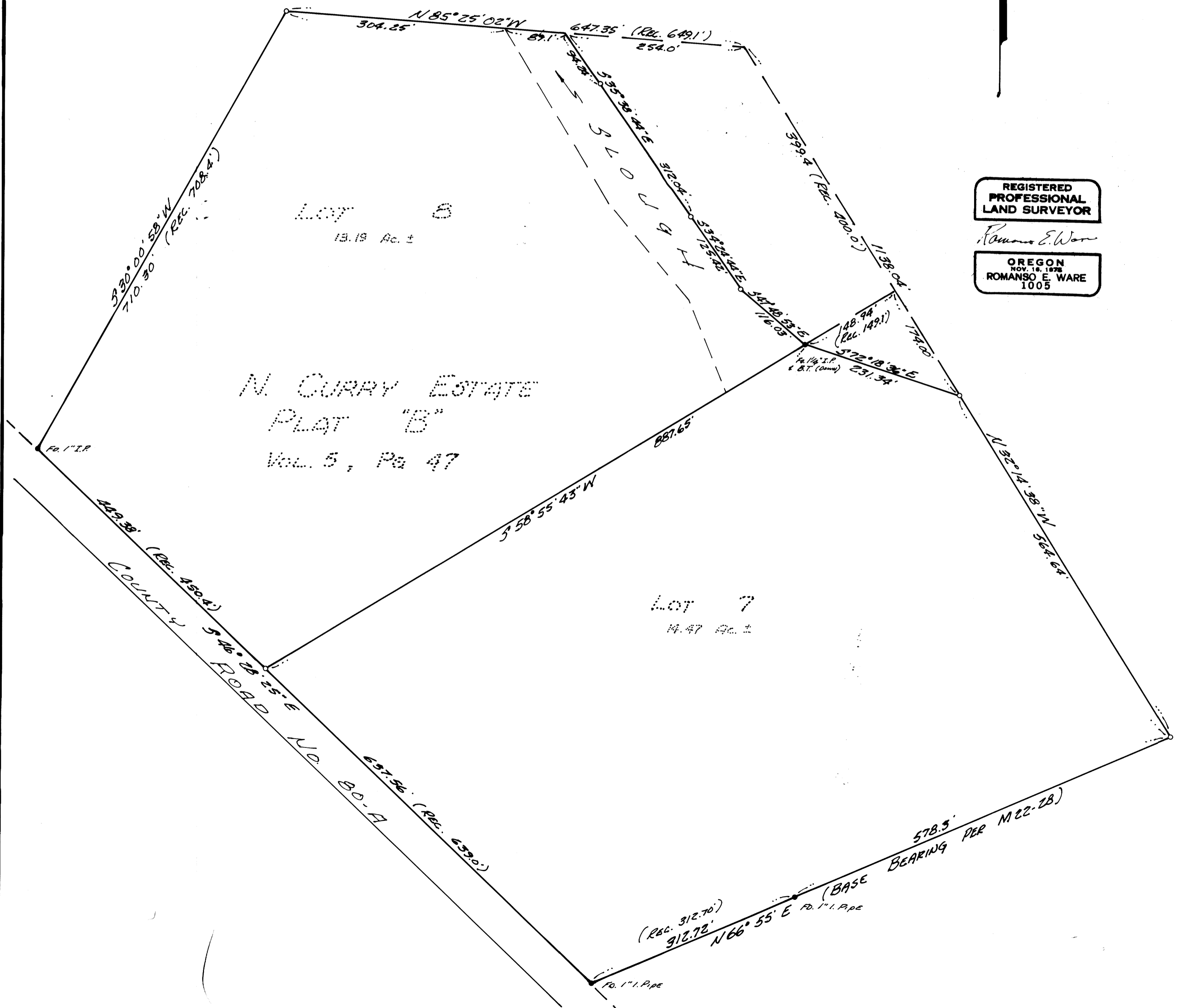
FILED
RECEIVED

MAR 16 1978

COUNTY SURVEYOR
DOUGLAS COUNTY, ORE.

- — FD. MONUMENT
- — SET 5/8" I. ROD

FOR RECORD MEASUREMENTS SEE PLAT & MAP FILE M 22-23.



REGISTERED
PROFESSIONAL
LAND SURVEYOR

Romano E. Ware

OREGON
NOV. 14, 1975
ROMANSO E. WARE
1005