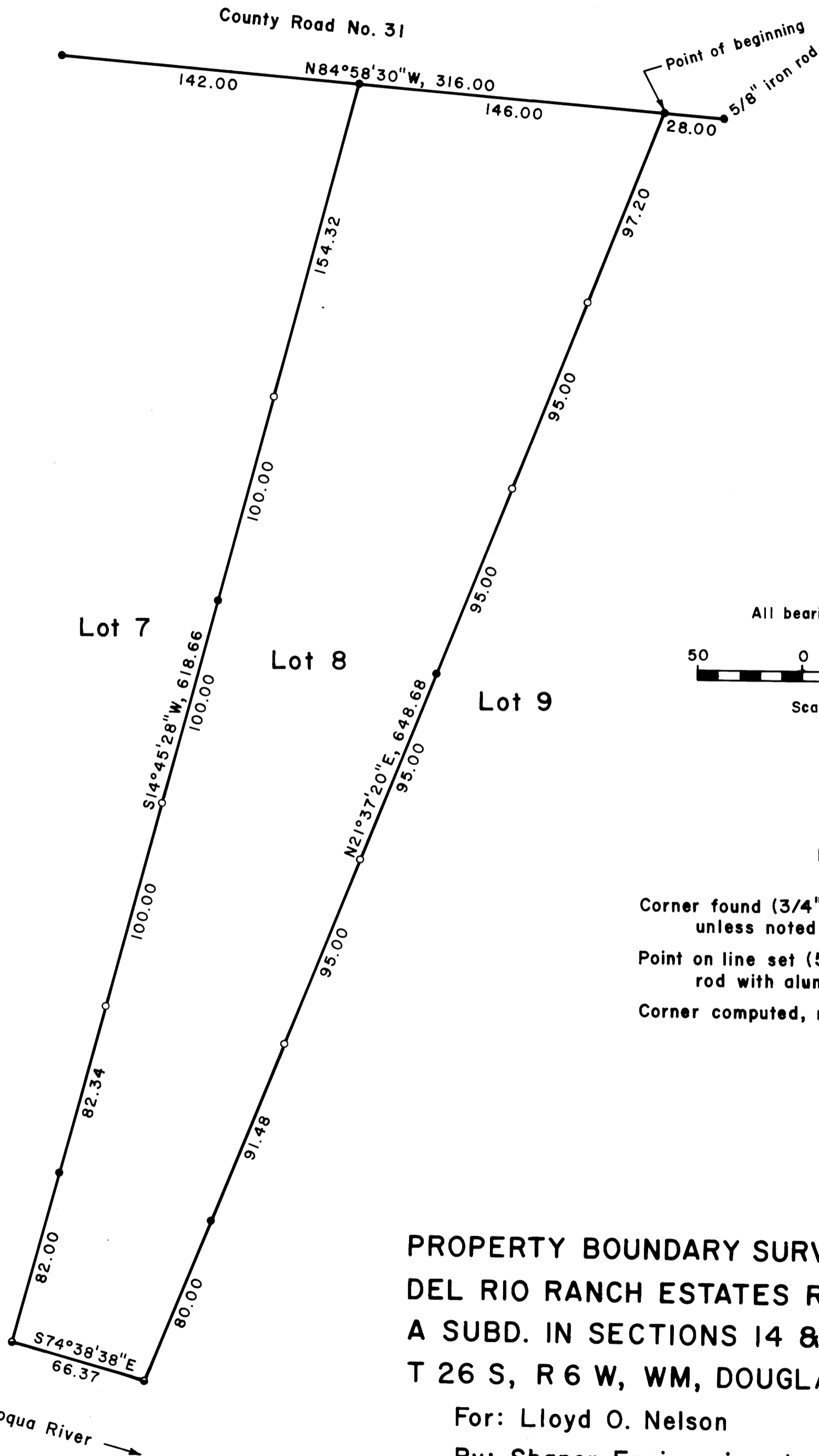


FILED ✓  
RECEIVED LC

MAR 13 1978

COUNTY SURVEYOR  
DOUGLAS COUNTY, ORE.

✓



LEGEND

- Corner found (3/4" iron rod unless noted) ●
- Point on line set (5/8" iron rod with aluminum cap) ○
- Corner computed, not set ◉

REGISTERED  
PROFESSIONAL  
LAND SURVEYOR

*BA Shaner*

OREGON  
OCT. 4, 1957  
BRUCE A SHANER  
430

PROPERTY BOUNDARY SURVEY OF LOT 8,  
DEL RIO RANCH ESTATES RIVER PLAT,  
A SUBD. IN SECTIONS 14 & 23,  
T 26 S, R 6 W, WM, DOUGLAS CO., OREGON

For: Lloyd O. Nelson

By: Shaner Engineering, Inc.

March 13, 1978

COUNTY SURVEYORS FILE DATA  
DO NOT REMOVE FROM OFFICE